



# **INTERPRETING IN DOMESTIC VIOLENCE MATTERS**

**Carla M. Mathers, Esquire, SC: L  
A MARIE Center Presentation**

# DOMESTIC VIOLENCE

- Statistics
- Public policy
- Procedure



# UNDERSTANDING DV PROCEDURE

- Civil system
- Criminal system



# DEFINITIONS

- Domestic Violence
- Sexual Assault/Rape
- Relationship Rape
- Stalking/Cyber Stalking
- Protective Orders
- Domestic Violence Courts



# DEFINED: PERSON ELIGIBLE FOR RELIEF & ABUSE

## ○ Person Eligible

- Spouse
- Cohabitant
- Familial relation
- Relative or child in common

## ○ Abuse

- Serious bodily harm
- Fear of imminent serious bodily harm
- Assault
- Rape/sexual offense
- False imprisonment
- Abuse of child or vulnerable adult



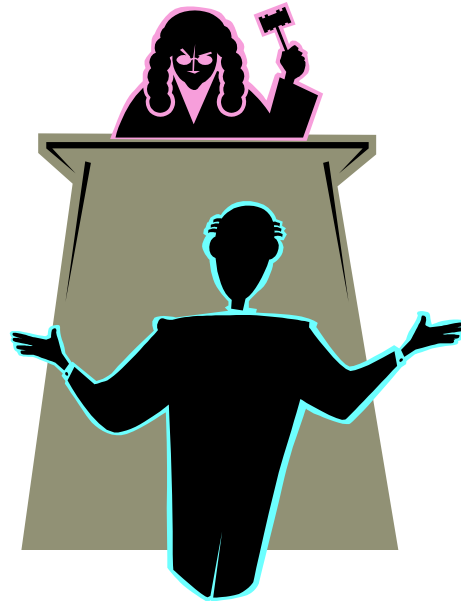
# PROVISIONS: ORDERS FOR PROTECTION

- Vocabulary dependent on state
  - Cease abuse provisions
  - Stay away provisions
  - No contact provisions
  - Restitution provisions
  - Relinquish firearms provisions
  - Custody, visitation and support provisions
  - Enforcement



# PROCEDURE: MARYLAND

- Interim
- Temporary
- Final



# PROCEDURE: ORDERS FOR PROTECTION

- Relief available
- Interpreting challenges





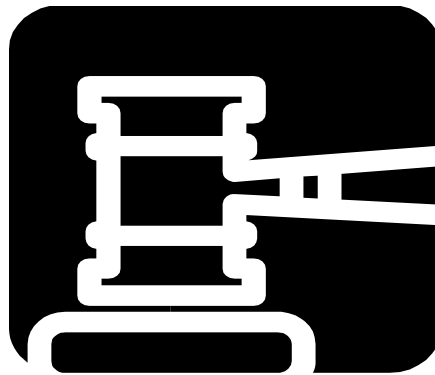
# PEACE ORDERS

- Person Eligible for Relief
- Interim, Temporary & Final
- Injunctive Relief



# RELATIONSHIP TO OTHER PROCEEDINGS

- Criminal matters
- Custody and support matters
- Temporary property matters
- Interstate Enforcement



# PREPARATION FOR INTERPRETING

- Case files
- Evidence
- Pro Se parties
- Linguistic choices



# INTERPRETING PROTOCOL

- Appearance conflicts
- Visual language issues
- Providing resources
- Advocacy services



# ADVOCACY SERVICES: ADWAS

Austin, Texas

Denver, Colorado

Minneapolis, Minnesota

Detroit/Flint, Michigan

Boston, Massachusetts

Burlington, Vermont

Rochester, New York

Columbus, Ohio

San Francisco/Bay Area, California

Honolulu, Hawaii

Salt Lake City, Utah

Metro Washington D.C.

Chicago, Illinois

Des Moines, Iowa

Philadelphia, Pennsylvania



## NEXT STEPS

- Next webinar: September 21, 2013
- Time: 1:00 to 2:30 EST
- Topic: Interpreting Depositions
  
- Archived sessions: <http://www.unco.edu/marie/>
  - Left column navigation to Webinars
- CEUs – Carolyn White at [carolyn.white@unco.edu](mailto:carolyn.white@unco.edu)

Thank you and good evening.

