

CIVIC HEALTH AND EQUITY INITIATIVE

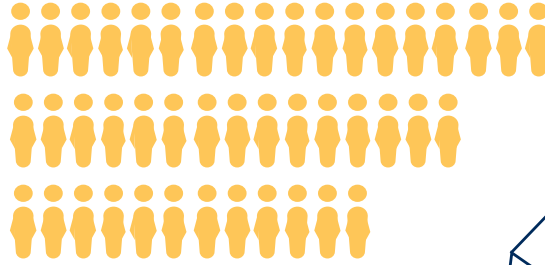
SCOPE & IMPACT OF UNC-COMMUNITY PARTNERSHIPS



128

TOTAL RESPONDENTS

This survey was administered to all University of Northern Colorado (UNC) community partners and employees who have worked with the Office of Engagement.



133

COMMUNITY PARTNERSHIPS IDENTIFIED

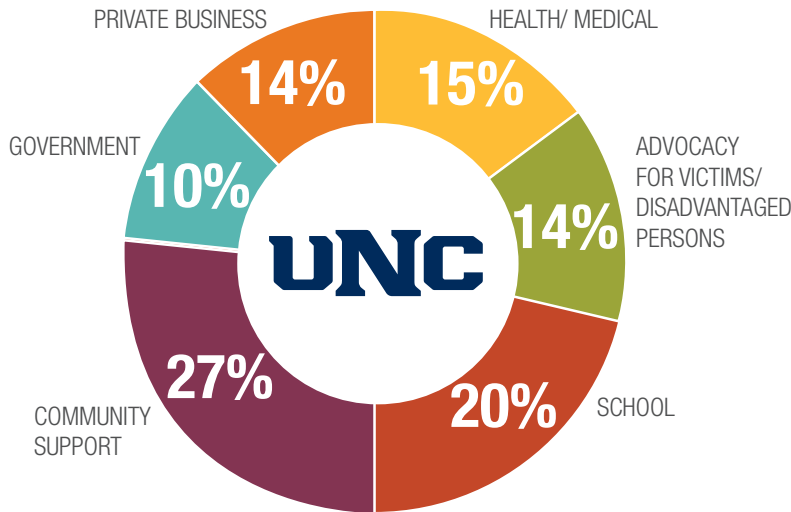
23

UNIQUE COMMUNITY PARTNERS

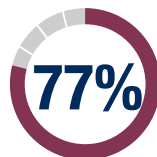
UNC-COMMUNITY PARTNERS & AFFILIATES' TOP REASONS TO ENGAGE

- **NETWORK** and build skills.
- **POSITIVELY INFLUENCE** the Greeley & Weld communities.
- **PROMOTE** opportunities for student engagement and learning.
- **PROVIDE** leadership opportunities.
- **SUSTAIN & PRESERVE** future partnerships.

COMMUNITY PARTNERS BY PRIMARY PURPOSE



COMMUNITY ORGANIZATION CHARACTERISTICS



ORGANIZATION WELL ESTABLISHED (10+ YRS)



SMALL ORGANIZATIONS (10 OR FEWER EMPLOYEES)



NON-PROFIT



LARGE ORGANIZATIONS (OVER 100 EMPLOYEES)



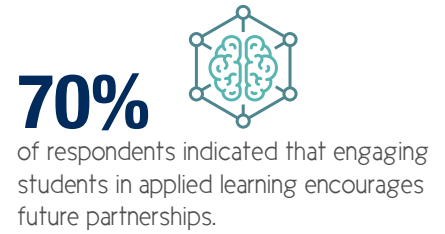
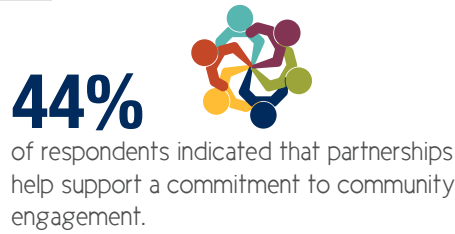
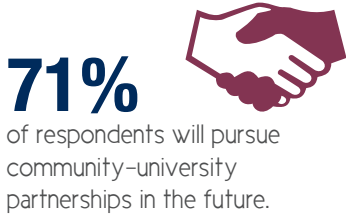
CIVIC HEALTH AND EQUITY INITIATIVE*

SCOPE & IMPACT OF UNC-COMMUNITY PARTNERSHIPS

128
TOTAL RESPONDENTS



PARTNERSHIP TAKEAWAYS



PARTNERS' VOICES

University partnerships have provided meaningful and life-changing opportunities for our students.

Strong collaboration with UNC and students enhanced our project.

The students are skilled and have contributed to our enterprise.

UNC PARTNER ORGANIZATIONS SERVE DIVERSE POPULATIONS



UNC AFFILIATES AND COMMUNITY PARTNERS RECOGNIZE THE VALUE AND NEED TO SUSTAIN THIS WORK.

OFFICE OF ENGAGEMENT NEXT STEPS | Opportunities for growth to maintain positive impacts and experiences include:



1. Maintain an open list of current and ongoing partnerships.

UNC Engage Portal



2. Continue support from administration, and enhance communication, visibility, and transparency.

CCE in the Campus Commons



3. Increase investment in faculty who undertake this work.

Faculty Engaged Scholars

*This 2017 project is part of a collective impact grant from The Center for Community Engagement & Service Learning (CCESL), University of Denver, in collaboration with Campus Compact of the Mountain West, and supported by the UNC Social Research Lab.