



Fall 2019 Fact Book

Version released 1/29/2020



Prepared by the Office of Institutional Reporting and Analysis Services

Table of Contents

<i>General Information and Purpose</i>	2
<i>Key Data Definitions</i>	3
Section I: Student Enrollment – Undergraduate and Graduate	6
• History of Fall Enrollment	6
• Percent Enrolled By Level	8
• Number of Students by Sub-Population – Undergraduate	9
• Number of Students by Sub-Population – Graduate	10
• UNC Compared to State of Colorado - Race/Ethnicity Breakdown	11
• Preparation of Educators and Online Learning – History of Enrollment	12
• Fall Enrollment by College and Level – Primary and Secondary Majors	13
• Undergraduate Enrollment by College and Sub-populations	14
Section II: New Recruitment and Enrollment Profiles	20
• New First Time Freshmen	20
• New Transfers	27
• New Graduate Students	32
Section III: Undergraduate Student Success	33
• New UG First Fall UNC GPA by Student Type	33
• Fall to Fall Retention Rates by Cohort and Sub-population	35
• Four Year Graduation Rates by Cohort and Sub-population	37
• Six year Graduation Rates by Cohort and Sub population	38
Section IV: Degrees Awarded	40
• Undergraduate and Graduate Degrees by College and Degree Type	40
• Degrees Awarded by Sub-population and Level	41
Section V: Staffing Information	43
• Staff Counts by Instructional or Non-Instructional Status	43
• Non-Instructional Staff Counts	44
• Full-time Instructional Staff Counts by Rank	46
• Full-time Instructional Staff Counts by College	49
• Full-time Instructional Staff Counts by College and Tenure	50

The mission of the Office of Institutional Reporting and Analysis Services is to analyze, and disseminate information in support of university strategic planning, policy formulation, enhanced decision-making, assessment, and compliance reporting. IM&T and in particular IRAS strives to provide information of the highest quality to UNC constituents and external entities that is understandable, insightful, timely and easily accessible.

General Information/Purpose

The Fall 2019 Fact Book was designed with the intention of providing UNC faculty, staff, students, as well as community partners, baseline information about UNC as part of a tradition of public accountability and transparency. Several principles guided the design of the final product including the intention to fulfill baseline knowledge needs about UNC's current students, provide longitudinal enrollment data where possible, and finally, use existing data from federal and state reporting so that statistics could be efficiently prepared and, in the future, usefully benchmarked. While many fact books include information about financial aid and financial revenue, this fact book is exclusively focused on students and employees.

There are five main sections:

- I. Overall Student Enrollment – Undergraduate and Graduate
- II. New Recruitment and Enrollment Profiles by Fall Term – Undergraduate and Graduate
- III. New Undergraduate Student Success Outcomes
- IV. Degrees Awarded – Undergraduate and Graduate
- V. Staffing Information

As a general reporting practice, most fact books consist of a series of tables and charts with very little narrative analysis. In addition, the analytic principle of parsimony drives the design of each analysis, which means that, in some cases, end users will have to calculate their own percentage breakdowns and/or grand totals using the data provided. The following pages include data definitions that may be useful for those not accustomed to higher education data and terminology, as well as a message about inclusive language from the VP for Campus Community and Climate. Definitions are in order of appearance and grouped by analytic section (I-V).

We expect future fact book versions to expand on the information that is included here.

Definitions for 2019 Fact Book

Section I – Student Enrollment – Undergraduate and Graduate

Headcount Enrollment - Number of students enrolled in at least one credit-bearing course after final grades for the semester. In this case, headcount enrollment is final enrollment for fall.

Undergraduate Enrollment - Enrollment numbers for Undergraduate (UG) students only; in most cases the student is working towards a Bachelor's degree or is enrolled in 100-400 level courses.

Graduate Enrollment – Enrollment numbers for Graduate (GR) students only; the student has a Bachelor's degree and is working on an advanced degree such as a Masters, Specialist, or Doctoral program or are pursuing a license.

Main Campus - Main campus students include students with one or more state-funded hours.

Extended Campus – Extended campus students are students with only cash funded courses.

Percent Change - Is the measure of change from Fall Final 2014 to Fall Final 2019 as a percentage. Caution: When considering % change, it is important to note that increases or decreases in categories with low numbers will result in high percentage change.

First Generation College Student – First generation is defined as a student who reported that neither parent/guardian has received a Bachelor's degree.

Pell Recipient – Pell Recipient is defined as a student who was offered a Pell grant > \$0.

Veteran Status – Veteran Status, over the course of the longitudinal history included in this fact book, is defined by a combination of self-identified veteran status or certified military benefits variables.

Gender – Gender is self-reported by the student. Unreported is coded as Unknown.

Race/ethnicity – Race/ethnicity is self-reported by the student. Students may leave the question blank but cannot indicate 'Do not wish to provide.' Race/ethnicity definitions follow federal reporting standards and have changed over the course of the longitudinal history reported here. See: https://nces.ed.gov/ipeds/Section/ana_Changes_to_25_2007_169.

Temporary U.S. Resident - Temporary U.S. Residents are students with a visa who are in this country on a temporary basis.

Minority Status – Minority student status includes students of Hispanic/Latino, Black/African American, Asian, Native Hawaiian/Pacific Islander, Native American and Multi-racial descent.

Latinx/Hispanic – a gender neutral alternative to Hispanic/Latino indicator. Latinx/Hispanic is equivalent in meaning to the federal terminology 'Hispanic/Latino'.

Residency Status – A *resident* student is classified as an in-state student for tuition purposes. A *WUE* student is classified as Western Undergraduate Exchange program. See: <http://www.wiche.edu/wue> or Registrar <http://www.unco.edu/registrar/residency/>. *Non-resident* includes students who do not meet requirements for in-state tuition and are not part of the WUE program. May also include students of unknown residency.

Undergraduate Studies – In Fall 2019, there was the completion of a restructuring where University College was eliminated and its programs were moved to other colleges. Exploring the liberal arts (XLA) programs and student designed majors are now in Undergraduate Studies.

Section II – New Recruitment and Enrollment Profile

New First Time – New first time is defined as a student attending post-secondary education for the first time after high school at the undergraduate level. New first time excludes non-degree seeking students. Some first time students enter with enough credits that they are technically not freshmen in credit count.

Transfer – New transfer students are undergraduate students who are enrolled in their first term and have earned college credit(s) at another institution. Transfer students are expected to be in good standing at all previous institutions. Strong candidates at admission have: a minimum of 30 college-level credit hours and a cumulative 2.4 GPA or higher from all institutions attended.

Applied - Student has submitted a completed application for review to attend the University.

Admitted - Student has been admitted to the University and qualifies for enrollment in coursework.

Enrolled - Student enrolled in courses at the University.

Yield - Percentage of admits who enroll each term.

In State – Student is classified as resident for tuition purposes.

Out of State – Student is classified as non-resident for tuition purposes. Out of State includes WUE (Western Undergraduate Exchange students and students with unknown residency).

Section III – Undergraduate Student Success Outcomes

First Time Full Time Freshmen Cohort – Includes students who were classified as ‘First Time’ based on fall final registration status, or first time in summer directly preceding fall term, and were full-time (defined as 12 or more credits) in the fall term.

Transfer Full Time Cohort – Includes students who were classified as ‘Transfer students’ based on fall final registration status, and were full-time (defined as 12 or more credits) in the fall term.

Underrepresented Minority Status – Colorado defines underrepresented higher education populations as students with Hispanic/Latino, African American, Native American, or Native Hawaiian/Pacific Islander descent.

Section IV – Degrees Awarded – Undergraduate and Graduate

Degrees Awarded – Type and number of degrees awarded to students in an academic year. Undergraduate: Bachelor of Arts and Bachelor of Science degrees; Graduate: Masters, Specialist and Doctorate degrees.

Academic year – Defined as 3 semesters beginning with summer, fall and spring. This definition of academic year is most consistent with IPEDS degrees awarded reporting.

Section V – Staffing Information

Instructional Staff – An occupational category that is comprised of staff who are either: 1) Primarily Instruction or 2) Instruction combined with research and/or public service. The intent of the Instructional Staff category is to include all individuals whose primary occupation includes instruction at the institution.

Full Time – The type of appointment at the snapshot date of November 1st determines whether an employee is full-time or part-time. The employee’s term of contract is not considered in making the determination of full- or part-time. Staff have to be categorized as having 0.75 FTE (Full Time

Equivalence) or more to be considered full-time, unless they are faculty on sabbatical, which are included in full-time faculty counts.

Academic Rank – A status designated by the institution according to the institution’s policies. The IPEDS HR survey that is mandatory we report to includes the ranks of Professor, Associate Professor, Assistant Professor, Instructor, and Lecturer.

Tenure – Status of a personnel position with respect to permanence of the position.

Tenure track – Personnel positions that lead to consideration for tenure.

Not on tenure track – Personnel positions that are considered non-tenure earning positions.

Notes: All staffing information definitions come from IPEDS glossary.

<https://surveys.nces.ed.gov/ipeds/VisGlossaryPopup.aspx?idlink=996>

A note on terminology from UNC’s VP of Campus Community and Climate:

“The redesign of the UNC Fact Book was a collaborative process involving Institutional Reporting and Analysis Services, the Division of Academic Affairs, as well as Campus Community and Climate. As one of the members of the design team, I am pleased we are releasing the Fall 2019 UNC Fact Book and making our institutional outcomes easily accessible and transparent. The terminology used in the UNC Fact Book this year reflects federal and state reporting standards. When reporting to, or obtaining data from these agencies, institutions are required to categorize with these specific terms. As an institution, we recognize this terminology is challenging and we are committed to providing future institutional reports with more inclusive reporting categories.”



Katrina Rodriguez, PhD

Vice President, Campus Community and Climate

Section I: Student Enrollment – Undergraduate and Graduate

Graph 1: History of Fall Student Enrollment since 2007

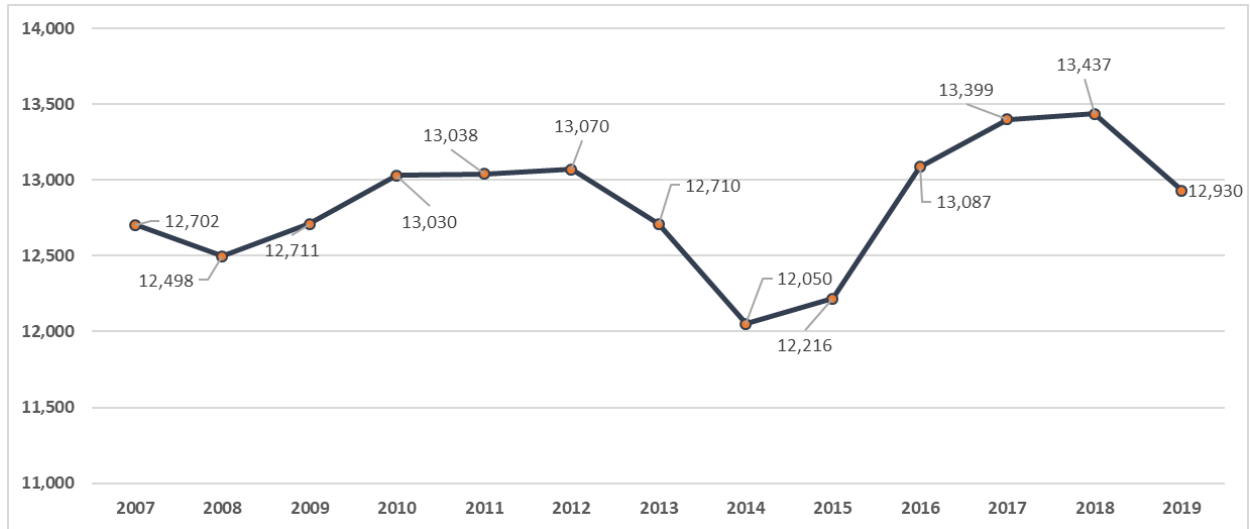


Table 1: History of Student Enrollment since 2007

Fall Term	Total Headcount	Fall Term	Total Headcount
Fall 2007	12,702	Fall 2014	12,050
Fall 2008	12,498	Fall 2015	12,216
Fall 2009	12,711	Fall 2016	13,087
Fall 2010	13,030	Fall 2017	13,399
Fall 2011	13,038	Fall 2018	13,437
Fall 2012	13,070	Fall 2019	12,930
Fall 2013	12,710		

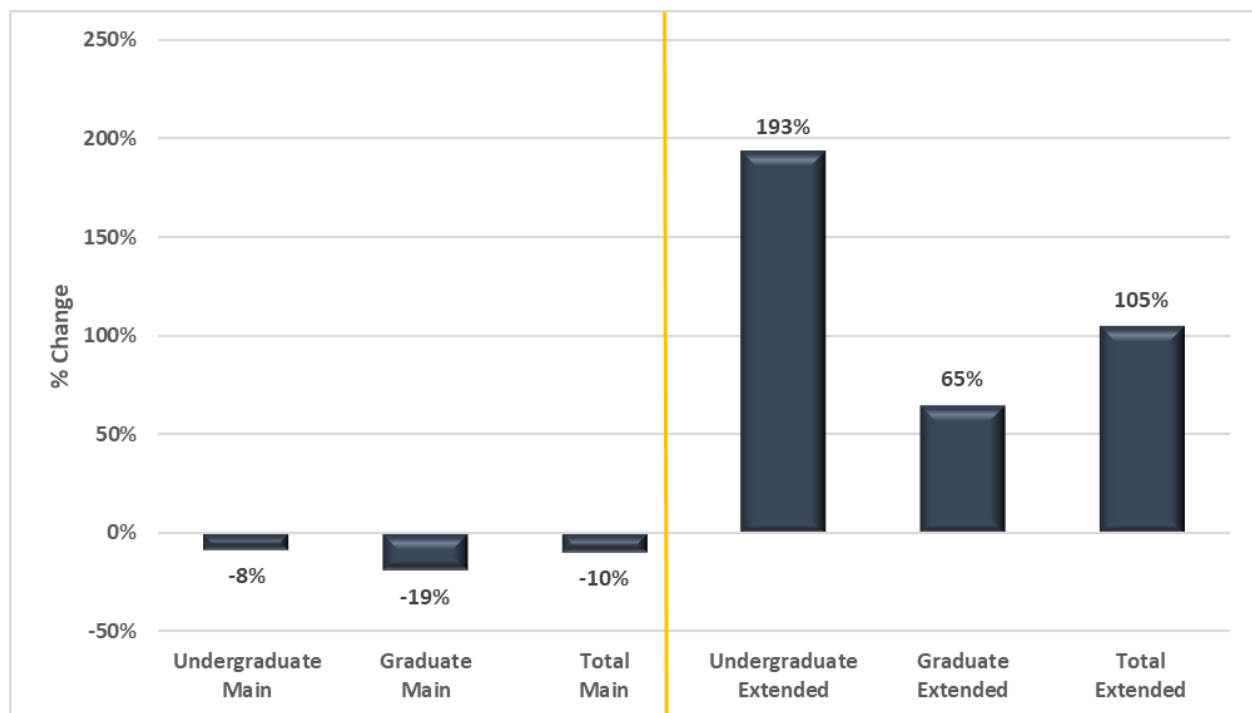
Source: UNC Historical Data 2007-2019 and updated data from Final Fall 2019.

Table 2: Fall Enrollment History – Number of Students by Campus and Level

	Fall 2014	Fall 2015	Fall 2016	Fall 2017	Fall 2018	Fall 2019	% Change Fall 2014 to Fall 2019
Main Campus	10,275	10,058	10,141	10,095	9,760	9,290	-10%
- <i>Undergraduate</i>	8,915	8,756	8,928	8,869	8,610	8,185	-8%
- <i>Graduate</i>	1,360	1,302	1,213	1,226	1,150	1,105	-19%
Extended Campus	1,775	2,158	2,946	3,304	3,677	3,640	105%
- <i>Undergraduate</i>	554	674	1,083	1,223	1,622	1,625	193%
- <i>Graduate</i>	1,221	1,484	1,863	2,081	2,055	2,015	65%

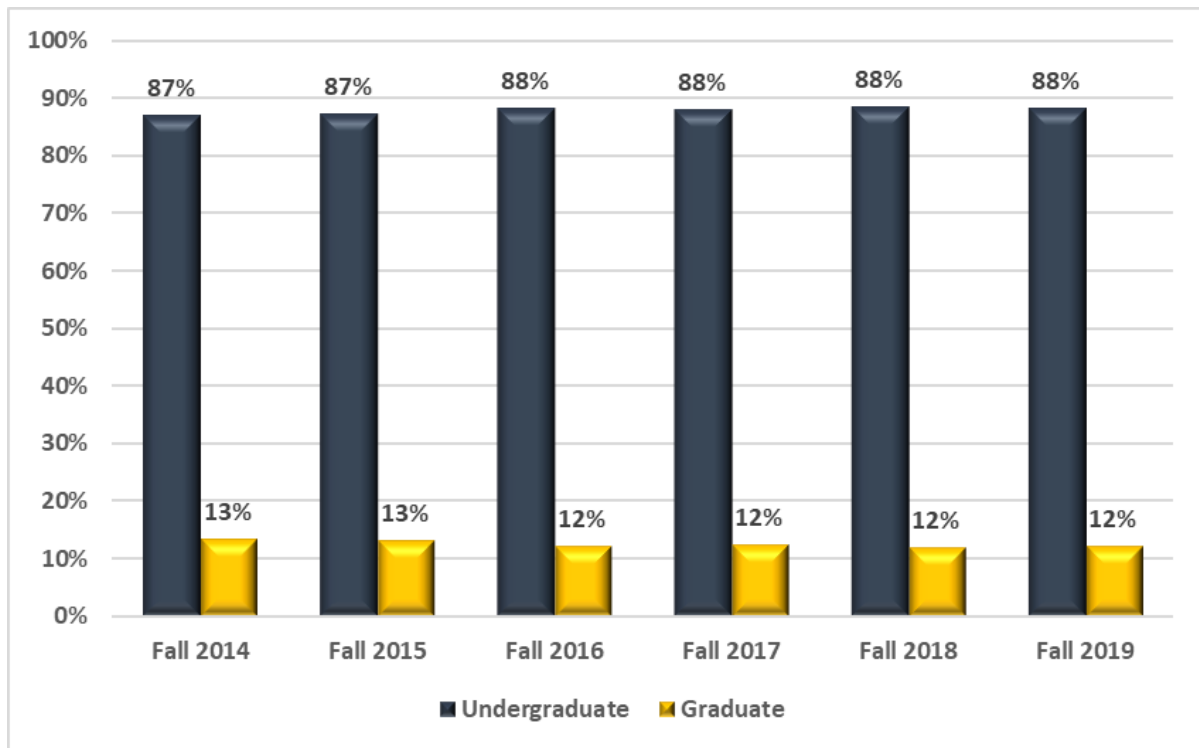
Source: UNC official enrollment views aggregated across terms. Note: Main Campus students = Students with one or more state-funded hours.

Graph 2: Percent Change From Fall 2014 to Fall 2019



Source: UNC official enrollment views aggregated across terms.

Graph 3: Main Campus % by Level



Graph 4: Extended Campus % by Level

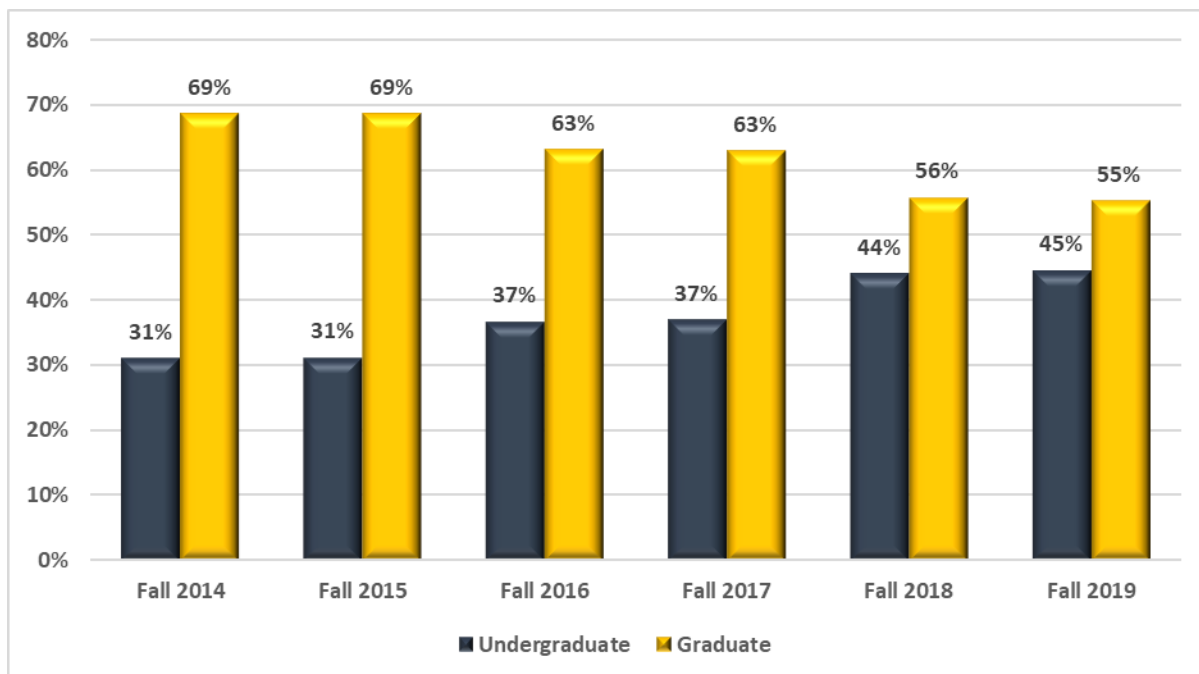


Table 3: Number of Undergraduate Degree Seeking Students by Sub-Population

	Fall 2014	Fall 2015	Fall 2016	Fall 2017	Fall 2018	Fall 2019
All UG Students	9,104	8,915	9,098	9,104	8,903	8,448
Female	5,797 (64%)	5,639 (63%)	5,831 (64%)	5,949 (65%)	5,788 (65%)	5,627 (67%)
Male	3,304 (36%)	3,275 (37%)	3,265 (36%)	3,155 (35%)	3,115 (35%)	2,819 (33%)
Unknown	3 (<1%)	1 (<1%)	2 (<1%)	0 (<1%)	0 (<1%)	2 (<1%)
American Indian or Alaska Native	31 (<1%)	31 (<1%)	32 (<1%)	37 (<1%)	35 (<1%)	38 (<1%)
Asian	147 (2%)	149 (2%)	181 (2%)	181 (2%)	197 (2%)	178 (2%)
Black or African American	375 (4%)	373 (4%)	356 (4%)	416 (5%)	390 (4%)	369 (4%)
Latinx/Hispanic	1,572 (17%)	1,632 (18%)	1,770 (19%)	1,902 (21%)	1,988 (22%)	1,989 (24%)
Multiracial	311 (3%)	334 (4%)	408 (4%)	424 (5%)	397 (4%)	387 (5%)
Native Hawaiian/ Pacific Islander	21 (<1%)	19 (<1%)	22 (<1%)	14 (<1%)	18 (<1%)	19 (<1%)
Temporary U.S. Resident	111 (1%)	98 (1%)	113 (1%)	108 (1%)	100 (1%)	72 (<1%)
Unknown	1,408 (15%)	1,328 (15%)	896 (10%)	455 (5%)	196 (2%)	95 (1%)
White	5,128 (56%)	4,951 (56%)	5,320 (58%)	5,567 (61%)	5,582 (63%)	5,301 (63%)
Veteran	176 (2%)	220 (2%)	210 (2%)	237 (3%)	263 (3%)	230 (4%)
Veteran Dependent	164 (2%)	200 (2%)	157 (2%)	131 (1%)	207 (2%)	186 (2%)
Non-Veteran	8,764 (96%)	8,495 (95%)	8,731 (96%)	8,736 (96%)	8,433 (95%)	8,032 (95%)
Pell Recipient	3,036 (33%)	2,896 (32%)	2,911 (32%)	2,994 (33%)	2,911 (33%)	2,665 (32%)
No Pell	6,068 (67%)	6,019 (68%)	6,187 (68%)	6,110 (67%)	5,992 (67%)	5,783 (68%)
First Generation	3,242 (36%)	3,181 (36%)	3,466 (38%)	3,935 (43%)	3,908 (44%)	3,659 (43%)
Not First Generation	5,862 (64%)	5,734 (64%)	5,632 (62%)	5,169 (57%)	4,995 (56%)	4,789 (57%)

Note: Data reflects degree seeking UG students as of official final freeze for each fall term.

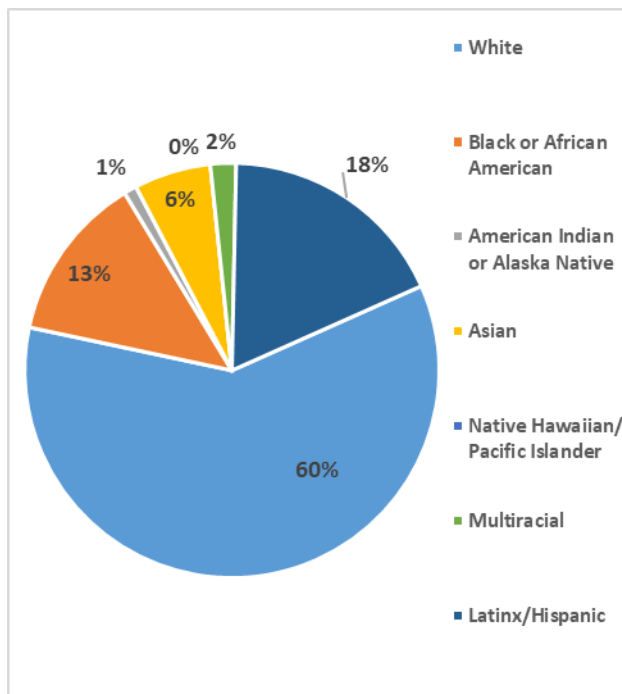
Table 4: Number of Graduate Degree Seeking Students by Sub-Population

	Fall 2014	Fall 2015	Fall 2016	Fall 2017	Fall 2018	Fall 2019
All GR Students	2,140	2,300	2,531	2,761	2,715	2,668
Female	1,535 (72%)	1,678 (73%)	1,910 (75%)	2,085 (76%)	2,053 (76%)	1,957 (73%)
Male	605 (28%)	622 (27%)	621 (25%)	676 (24%)	662 (24%)	697 (26%)
Unknown	0 (<1%)	0 (<1%)	0 (<1%)	0 (<1%)	0 (<1%)	14 (<1%)
American Indian or Alaska Native	6 (<1%)	5 (<1%)	6 (<1%)	9 (<1%)	10 (<1%)	10 (<1%)
Asian	31 (1%)	39 (2%)	48 (2%)	49 (2%)	54 (2%)	56 (2%)
Black or African American	52 (2%)	55 (2%)	64 (3%)	71 (3%)	59 (2%)	71 (3%)
Latinx/Hispanic	153 (7%)	174 (8%)	230 (9%)	248 (9%)	267 (10%)	289 (11%)
Multiracial	53 (2%)	51 (2%)	54 (2%)	67 (2%)	75 (3%)	67 (3%)
Native Hawaiian/ Pacific Islander	1 (<1%)	2 (<1%)	1 (<1%)	2 (<1%)	5 (<1%)	5 (<1%)
Temporary U.S. Resident	171 (8%)	143 (6%)	163 (6%)	181 (7%)	165 (6%)	137 (5%)
Unknown	75 (4%)	85 (4%)	74 (3%)	62 (2%)	44 (2%)	27 (1%)
White	1,598 (75%)	1,746 (76%)	1,891 (75%)	2,072 (75%)	2,036 (75%)	2,006 (75%)
Veteran	45 (2%)	64 (3%)	59 (2%)	44 (2%)	76 (3%)	86 (3%)
Veteran Dependent	36 (2%)	37 (2%)	29 (1%)	17 (<1%)	52 (2%)	66 (2%)
Non-Veteran	2,059 (96%)	2,199 (96%)	2,443 (97%)	2,700 (98%)	2,587 (95%)	2,516 (94%)

Note: Data reflects degree seeking GR students as of official final freeze for each fall term.

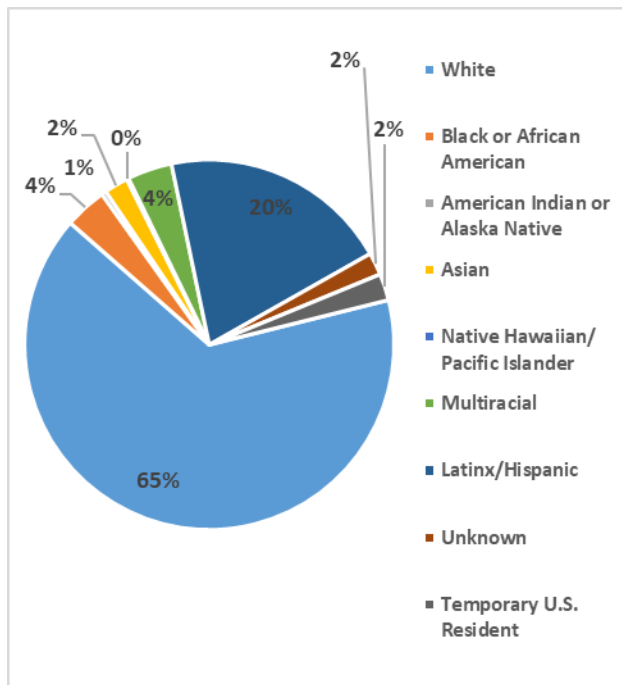
Graph 5: State and University Demographic Comparison – Race/Ethnicity

State of Colorado



Colorado	
White	60%
Black or African American	13%
American Indian or Alaska Native	1%
Asian	6%
Native Hawaiian/ Pacific Islander	<1%
Multiracial	2%
Latinx/Hispanic	18%

UNC Enrolled Fall 2019

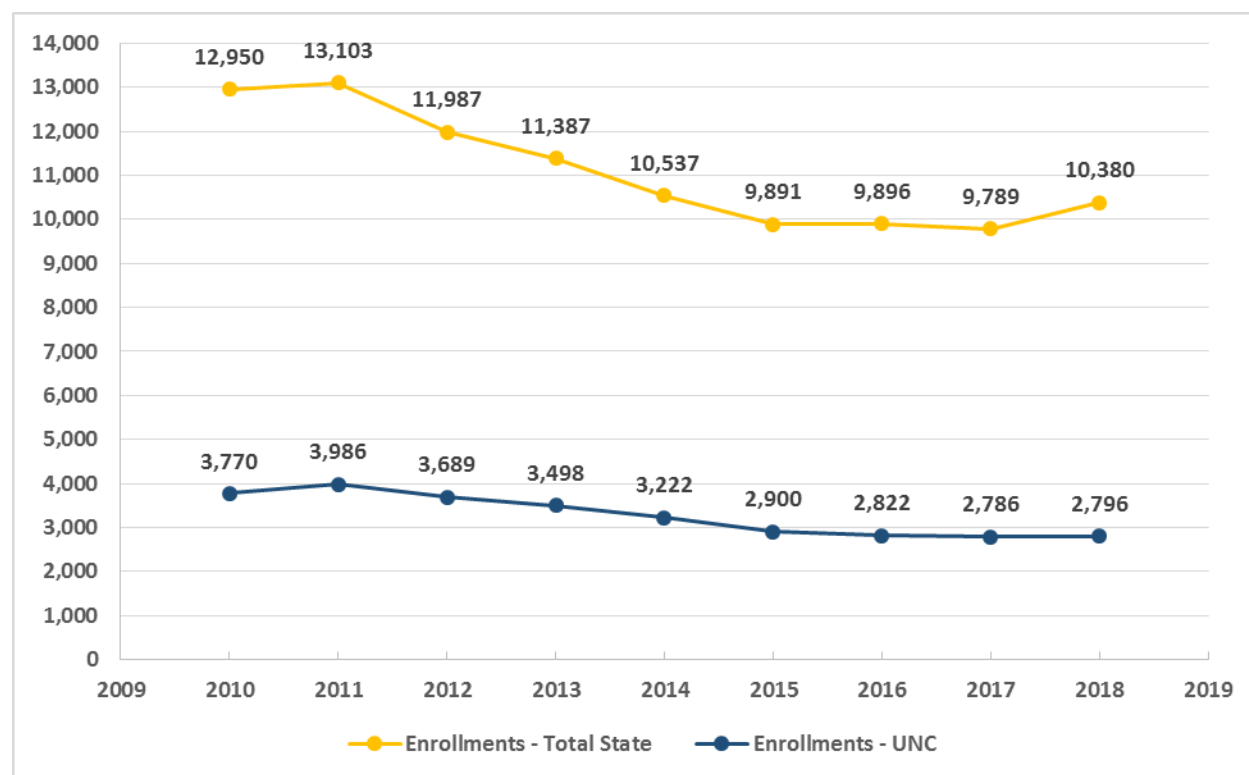


UNC Fall 2019 Final	
White	65%
Black or African American	4%
American Indian or Alaska Native	<1%
Asian	2%
Native Hawaiian/ Pacific Islander	<1%
Multiracial	4%
Latinx/Hispanic	20%
Unknown	2%
Temporary U.S. Resident	2%

Colorado data from US Census QuickFacts v2019.
Online at: www.census.gov/quickfacts.

Preparation and Development of Educators and Online Learning – History of Enrollment

Graph 6: Program Enrollments by State and UNC, 2010-2018



Source: 2018 Legislative Report Educator Preparation Report AY2017-2018, p.10. AY2018-2019 Hasn't been published by CDHE as of the date of the fact book release.

Table 5: Degree Seeking Student Counts for Online Distance Learning, 2014-2019

			Fall 2014	Fall 2015	Fall 2016	Fall 2017	Fall 2018	Fall 2019	% Change 2014 to 2019
Full-Time	UG	Distance Courses Only	40	50	47	36	45	87	118%
		Some Distance Courses	1,348	1,586	1,511	1,312	1,540	1,716	27%
		No Distance Courses	6,879	6,483	6,684	6,899	6,399	5,873	-15%
	GR	Distance Courses Only	51	55	74	92	123	148	190%
		Some Distance Courses	138	200	230	246	216	197	43%
		No Distance Courses	723	692	687	682	680	581	-20%
Part-Time	UG	Distance Courses Only	231	237	210	298	345	338	46%
		Some Distance Courses	100	106	122	100	106	111	11%
		No Distance Courses	506	453	524	459	468	323	-36%
	GR	Distance Courses Only	418	438	562	716	821	932	123%
		Some Distance Courses	149	207	259	331	321	278	87%
		No Distance Courses	661	708	719	694	554	532	-20%

Source: UNC official enrollment views. Degree seeking students only.

Table 6: Final Fall Enrollment History – by College – Primary and Secondary Programs Considered

College	Level	Fall 2014	Fall 2015	Fall 2016	Fall 2017	Fall 2018	Fall 2019
Education and Behavioral Sciences	Undergraduate	1,325 (11%)	1,519 (13%)	1,713 (14%)	1,792 (15%)	1,804 (15%)	1,819 (16%)
	Graduate	1,337 (12%)	1,446 (13%)	1,535 (13%)	1,656 (14%)	1,559 (13%)	1,540 (14%)
Humanities and Social Sciences	Undergraduate	1,964 (17%)	1,926 (17%)	1,950 (16%)	1,954 (16%)	1,951 (16%)	1,962 (17%)
	Graduate	84 (<1%)	67 (<1%)	79 (<1%)	83 (<1%)	84 (<1%)	69 (<1%)
Monfort College of Business	Undergraduate	1,047 (9%)	1,028 (9%)	1,068 (9%)	981 (8%)	958 (8%)	1,056 (9%)
	Graduate	28 (<1%)	23 (<1%)	25 (<1%)	29 (<1%)	43 (<1%)	135 (1%)
Natural and Health Sciences	Undergraduate	3,082 (27%)	3,103 (27%)	3,112 (26%)	3,153 (26%)	3,095 (26%)	2,943 (26%)
	Graduate	541 (5%)	558 (5%)	675 (6%)	736 (6%)	755 (6%)	680 (6%)
Performing and Visual Arts	Undergraduate	865 (7%)	843 (7%)	882 (7%)	920 (8%)	931 (8%)	899 (8%)
	Graduate	173 (1%)	220 (2%)	235 (2%)	272 (2%)	287 (2%)	251 (2%)
Undergraduate Studies / University College	Undergraduate	1,166 (10%)	831 (7%)	686 (6%)	628 (5%)	459 (4%)	25 (<1%)

Source: Internal report built in IRAS. Note: Totals may not reconcile with unduplicated headcounts because both 1st and 2nd programs are counted. Students counted were degree seeking. Note: Some increases and decreases in counts are due to movement of programs in and out of colleges. In Fall 2019, University College was eliminated and its programs were moved to other colleges. Exploring the liberal arts (XLA) programs and student designed majors are now in Undergraduate Studies.

Undergraduate Enrollment

Table 7: Fall 2019 - UG Degree Seeking Enrollment by College and Gender – Number of Students by Primary Majors

College	Female	Male	Unknown	Total
Education and Behavioral Sciences	1,487 (86%)	235 (14%)	1 (<1%)	1,723
Humanities and Social Sciences	1,053 (58%)	771 (42%)	0 (<1%)	1,824
Monfort College of Business	380 (37%)	638 (63%)	0 (<1%)	1,018
Natural and Health Sciences	2,080 (73%)	774 (27%)	1 (<1%)	2,855
Performing and Visual Arts	520 (60%)	346 (40%)	0 (<1%)	866
Undergraduate Studies	107 (66%)	55 (34%)	0 (<1%)	162
Total	5,627 (67%)	2,819 (33%)	2 (<1%)	8,448

Source: UNC official enrollment views. Degree seeking students only.

Graph 7: Fall 2019 - UG Degree Seeking Enrollment by College and Gender

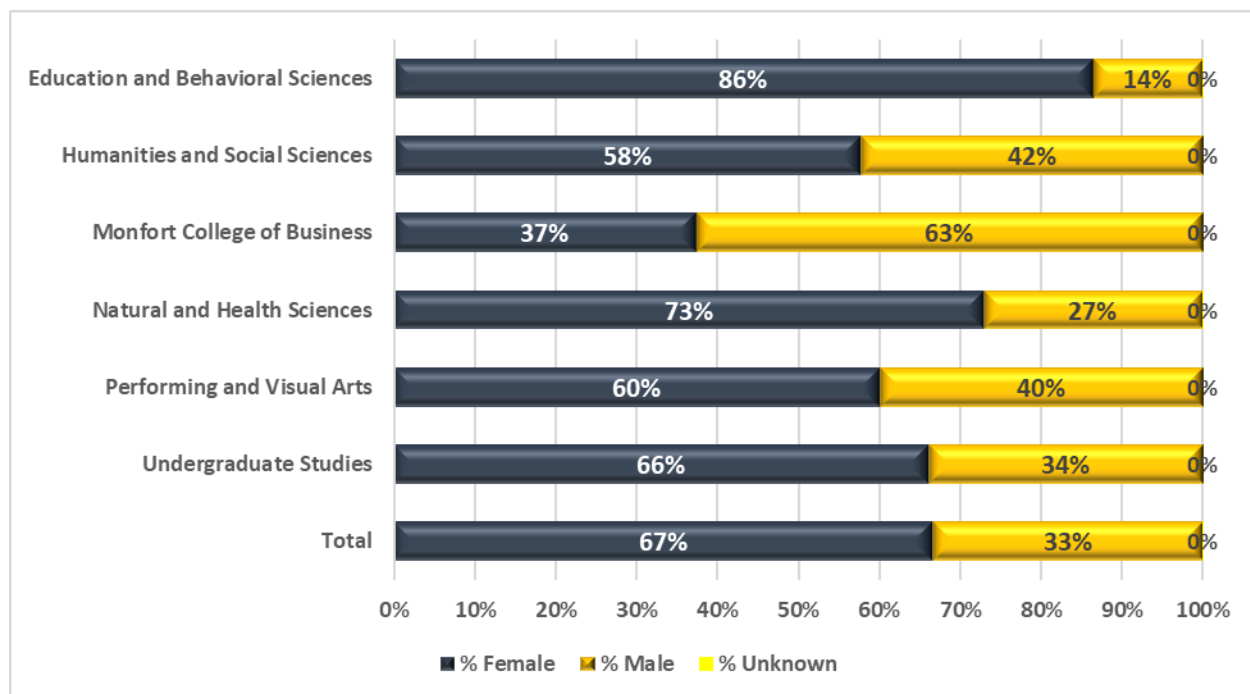


Table 8: Fall 2019 - UG Degree Seeking Enrollment by College and Minority Status – Number of Students by Primary Majors

College	Minority	Non-Minority	Total
Education and Behavioral Sciences	583 (34%)	1,140 (66%)	1,723
Humanities and Social Sciences	710 (39%)	1,114 (61%)	1,824
Monfort College of Business	396 (39%)	622 (61%)	1,018
Natural and Health Sciences	991 (35%)	1,864 (65%)	2,855
Performing and Visual Arts	242 (28%)	624 (72%)	866
Undergraduate Studies	58 (36%)	104 (64%)	162
Total	2,980 (35%)	5,468 (65%)	8,448

Source: UNC official enrollment views. Degree seeking students only.

Graph 8: Fall 2019 - UG Degree Seeking Enrollment by College and Minority

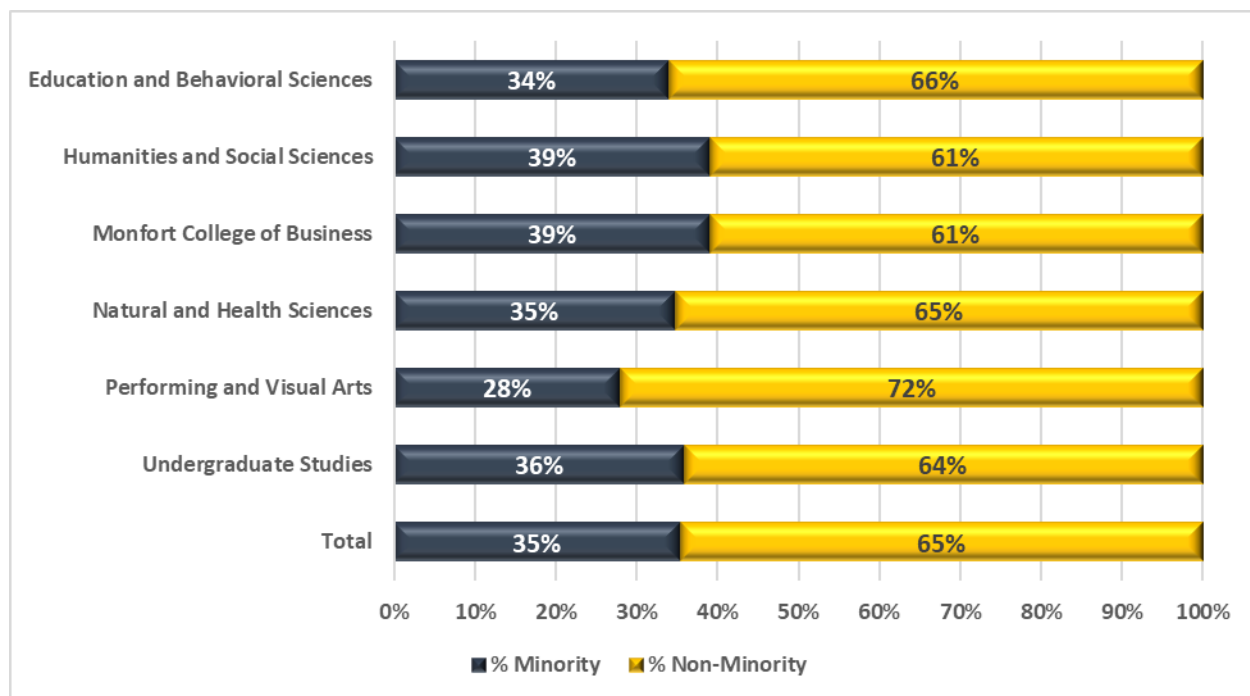


Table 9: Fall 2019 - UG Degree Seeking Enrollment by College and Registration Status – Number of Students by Primary Majors

College	Continuing or Readmit	First-Time	Transfer	Total
Education and Behavioral Sciences	1,224 (71%)	319 (19%)	180 (10%)	1,723
Humanities and Social Sciences	1,413 (77%)	292 (16%)	119 (7%)	1,824
Monfort College of Business	693 (68%)	251 (25%)	74 (7%)	1,018
Natural and Health Sciences	1,954 (68%)	631 (22%)	270 (9%)	2,855
Performing and Visual Arts	629 (73%)	201 (23%)	36 (4%)	866
Undergraduate Studies	32 (20%)	120 (74%)	10 (6%)	162
Total	5,945 (70%)	1,814 (21%)	689 (8%)	8,448

Source: UNC official enrollment views. Degree seeking students only.

Graph 9: Fall 2019 - UG Degree Seeking Enrollment by College and Registration Status

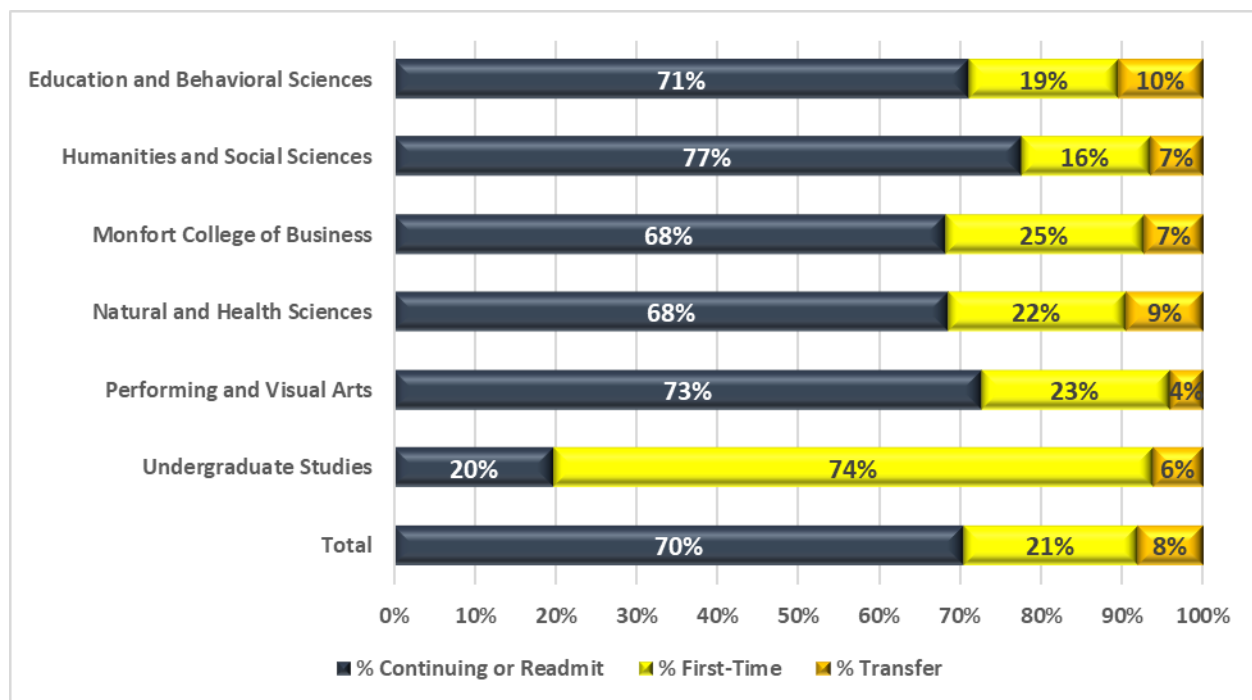


Table 10: Fall 2019 - UG Degree Seeking Enrollment by College and Residency Status – Number of Students by Primary Majors

College	Resident	Non-Resident	WUE	Total
Education and Behavioral Sciences	1,504 (87%)	110 (6%)	109 (6%)	1,723
Humanities and Social Sciences	1,599 (88%)	96 (5%)	129 (7%)	1,824
Monfort College of Business	887 (87%)	57 (6%)	74 (7%)	1,018
Natural and Health Sciences	2,400 (84%)	228 (8%)	227 (8%)	2,855
Performing and Visual Arts	679 (78%)	68 (8%)	119 (14%)	866
Undergraduate Studies	131 (81%)	25 (15%)	6 (4%)	162
Total	7,200 (85%)	584 (7%)	664 (8%)	8,448

Source: UNC official enrollment views. Degree seeking students only.

Graph 10: Fall 2019 - UG Degree Seeking Enrollment by College and Residency Status

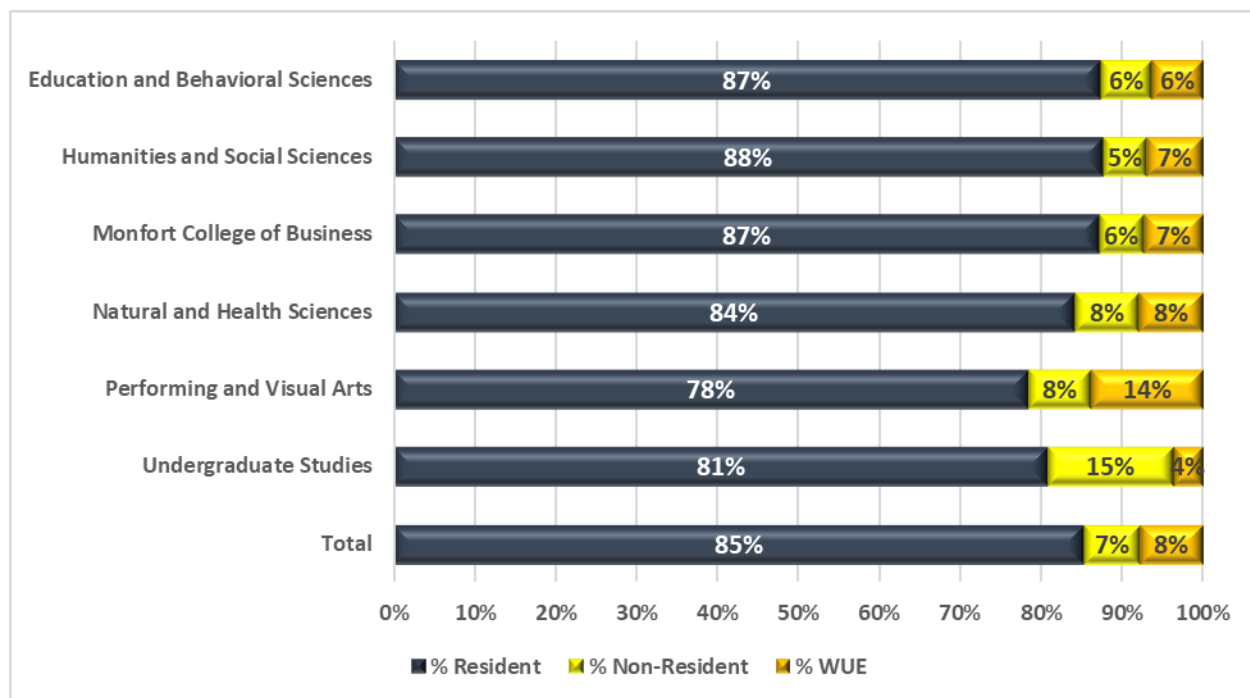


Table 11: Fall 2019 - UG Degree Seeking Enrollment by College and First Generation Status – Number of Students by Primary Majors

College	First Generation	Not First Generation	Total
Education and Behavioral Sciences	794 (46%)	929 (54%)	1,723
Humanities and Social Sciences	823 (45%)	1,001 (55%)	1,824
Monfort College of Business	443 (44%)	575 (56%)	1,018
Natural and Health Sciences	1,271 (45%)	1,584 (55%)	2,855
Performing and Visual Arts	273 (32%)	593 (68%)	866
Undergraduate Studies	55 (34%)	107 (66%)	162
Total	3,659 (43%)	4,789 (57%)	8,448

Source: UNC official enrollment views. Degree seeking students only.

Graph 11: Fall 2019 - UG Degree Seeking Enrollment by College and First Generation Status

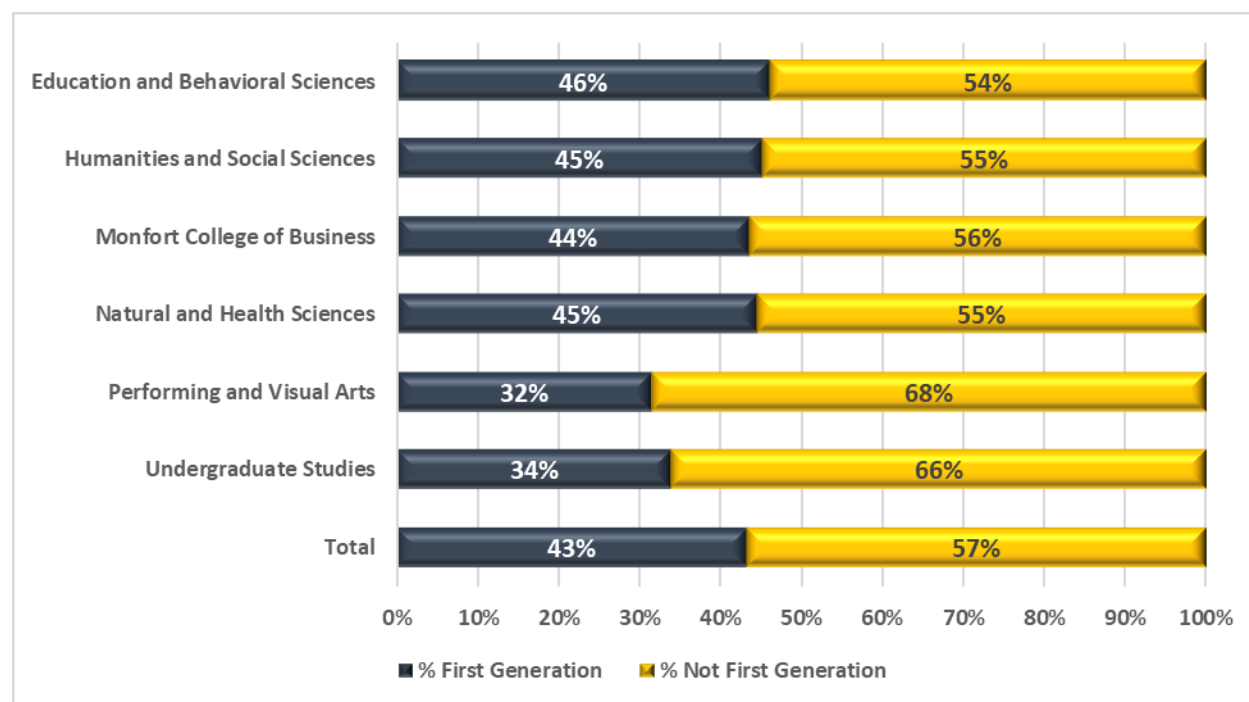
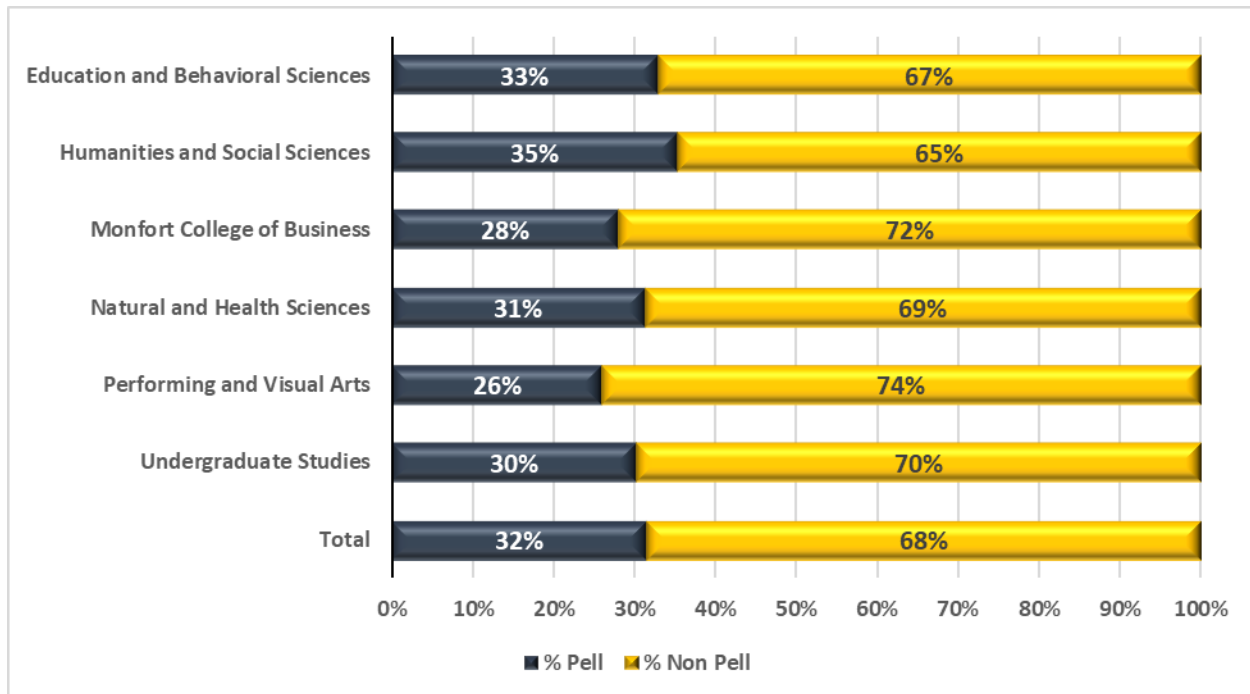


Table 12: Fall 2019 - UG Degree Seeking Enrollment by College and Pell Recipient Status – Number of Students by Primary Majors

College	Pell	Non Pell	Total
Education and Behavioral Sciences	567 (33%)	1,156 (67%)	1,723
Humanities and Social Sciences	644 (35%)	1,180 (65%)	1,824
Monfort College of Business	286 (28%)	732 (72%)	1,018
Natural and Health Sciences	894 (31%)	1,961 (69%)	2,855
Performing and Visual Arts	225 (26%)	641 (74%)	866
Undergraduate Studies	49 (30%)	113 (70%)	162
Total	2,665 (32%)	5,783 (68%)	8,448

Source: UNC official enrollment views. Degree seeking students only.

Graph 12: Fall 2019 - UG Degree Seeking Enrollment by College and Pell Recipient Status



Section II: New Recruitment and Enrollment Profile

New First-Time Undergraduate

Table 13: UG Degree Seeking Domestic New First-Time Applications, Admits and Enrolled with Yield Rate - Fall Terms 2014-2019

	Applied	Admitted	Enrolled	Yield
Fall 2014	6,135	5,509	1,938	35%
Fall 2015	7,116	6,359	2,035	32%
Fall 2016	6,734	6,086	2,142	35%
Fall 2017	7,394	6,590	2,100	32%
Fall 2018	8,198	7,448	1,907	26%
Fall 2019	9,198	8,360	1,778	21%

Source: SURDS Undergraduate Admissions File. Enrolled count is as of census. Degree seeking only. Fall applications only.

Graph 13: Degree Seeking New First-Time Admissions Activity

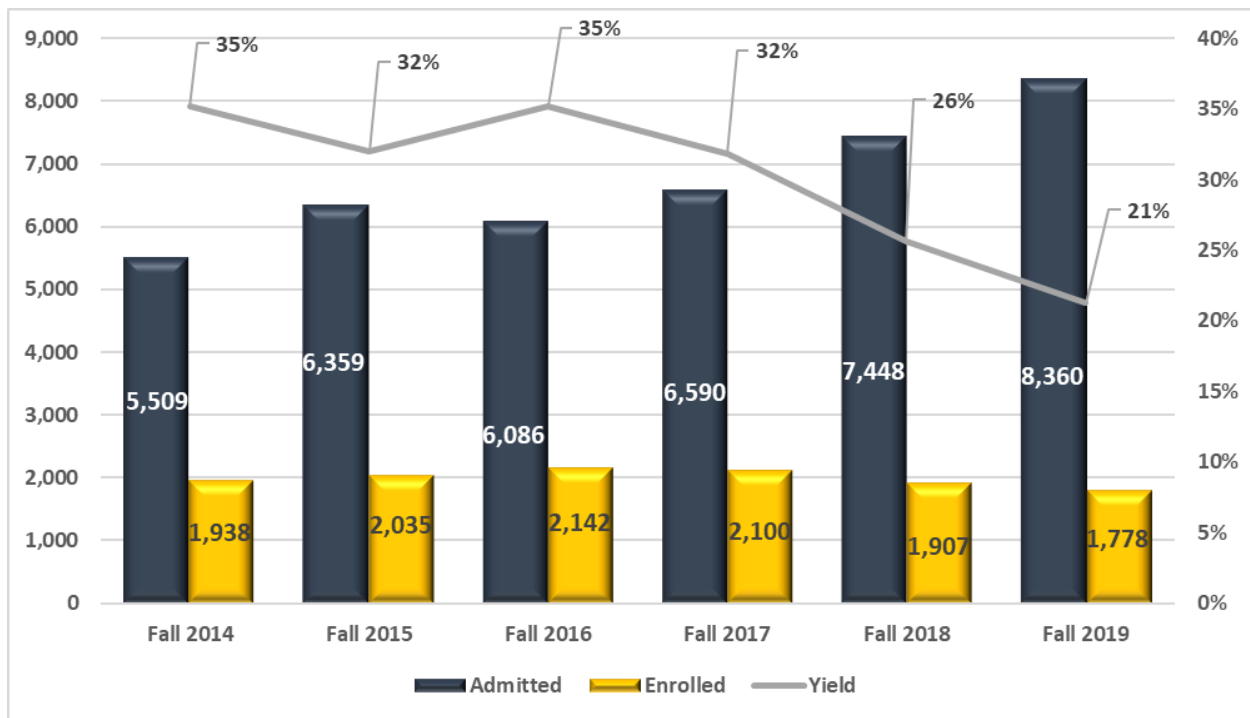


Table 14: Fall UG Degree Seeking New First-Time Profile – Number of Students by Sub-Population

	Fall 2014	Fall 2015	Fall 2016	Fall 2017	Fall 2018	Fall 2019
All Enrolled	1,945	2,046	2,157	2,147	1,960	1,814
In State	1,703 (88%)	1,761 (86%)	1,826 (85%)	1,816 (85%)	1,638 (84%)	1,575 (87%)
Out of State	242 (12%)	285 (14%)	331 (15%)	331 (15%)	322 (16%)	239 (13%)
Female	1,283 (66%)	1,304 (64%)	1,386 (64%)	1,409 (66%)	1,263 (64%)	1,220 (67%)
Male	662 (34%)	742 (36%)	771 (36%)	738 (34%)	697 (36%)	594 (33%)
Unknown	0 (<1%)	0 (<1%)	0 (<1%)	0 (<1%)	0 (<1%)	0 (<1%)
American Indian or Alaska Native	9 (<1%)	6 (<1%)	11 (<1%)	7 (<1%)	10 (<1%)	8 (<1%)
Asian	37 (2%)	45 (2%)	54 (3%)	47 (2%)	51 (3%)	39 (2%)
Black or African American	115 (6%)	113 (6%)	79 (4%)	129 (6%)	90 (5%)	95 (5%)
Latinx/Hispanic	436 (22%)	503 (25%)	498 (23%)	529 (25%)	520 (27%)	501 (28%)
Multiracial	96 (5%)	103 (5%)	119 (6%)	117 (5%)	111 (6%)	97 (5%)
Native Hawaiian/ Pacific Islander	4 (<1%)	7 (<1%)	10 (<1%)	5 (<1%)	4 (<1%)	5 (<1%)
Temporary U.S. Resident	7 (<1%)	9 (<1%)	16 (<1%)	9 (<1%)	12 (<1%)	9 (<1%)
Unknown	30 (2%)	23 (1%)	5 (<1%)	11 (<1%)	18 (<1%)	1 (<1%)
White	1,211 (62%)	1,237 (60%)	1,365 (63%)	1,293 (60%)	1,144 (58%)	1,059 (58%)
Pell Recipient	698 (36%)	712 (35%)	749 (35%)	733 (34%)	695 (35%)	616 (34%)
No Pell	1,247 (64%)	1,334 (65%)	1,408 (65%)	1,414 (66%)	1,265 (65%)	1,198 (66%)
First Generation	706 (36%)	783 (38%)	926 (43%)	946 (44%)	903 (46%)	747 (41%)
Not First Generation	1,239 (64%)	1,263 (62%)	1,231 (57%)	1,201 (56%)	1,057 (54%)	1,067 (59%)
Veteran	20 (1%)	48 (2%)	38 (2%)	34 (2%)	29 (1%)	14 (<1%)
Veteran Dependent	59 (3%)	48 (2%)	12 (<1%)	7 (<1%)	47 (2%)	46 (3%)
Non-Veteran	1,866 (96%)	1,950 (95%)	2,107 (98%)	2,106 (98%)	1,884 (96%)	1,754 (97%)

Source: UNC official enrollment views aggregated across terms. Undergraduate degree seeking only. Includes those admitted to summer or fall and enrolled in fall term as first time.

Table 15: Fall UG Degree Seeking New First-Time Student Profile – Academic Preparation Trends

	Fall 2014	Fall 2015	Fall 2016	Fall 2017	Fall 2018	Fall 2019
Avg. High School Percentile Rank	64	64	64	63	63	63
Avg. High School GPA	3.31	3.31	3.33	3.30	3.32	3.36
Avg. ACT Composite	22	22	22	22	23	23
Avg. ACT Math	22	22	22	21	22	22
Avg. SAT Math *	526	516	514	553	530	529
Avg. SAT Verbal *	524	523	525	576	544	545

Source: UAF SURDS aggregated for Fact Book. * In Fall 2017, most students were taking the new version of the SAT. The new version of the SAT is scored differently.

Graph 14: Fall UG Degree Seeking New First-Time Enrolling Student – High School GPA Box Plots

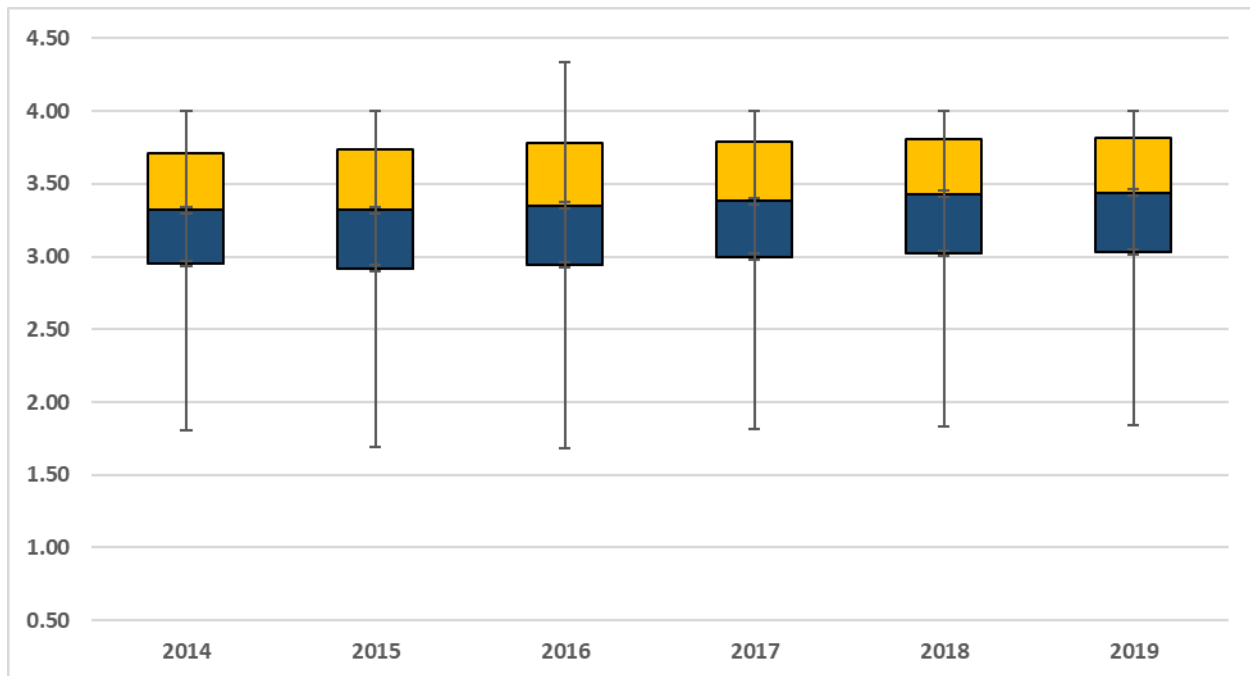


Table 16: Fall UG Degree Seeking New First-Time Student Profile – CCHE Index Descriptive Statistics

	Fall 2014	Fall 2015	Fall 2016	Fall 2017	Fall 2018	Fall 2019
Avg. CCHE Index	106	106	107	105	105	105
Median CCHE Index	105	105	106	105	106	106
25th Percentile	96	95	95	94	96	95
75th Percentile	116	117	117	117	117	117

Source: UAF SURDS aggregated for Fact Book. The CCHE Index is calculated by using a combination of a student's HS GPA, HS rank, and ACT/SAT score.

Graph 15: Fall UG Degree Seeking New First-Time Enrolling Student – CCHE Index Box Plots

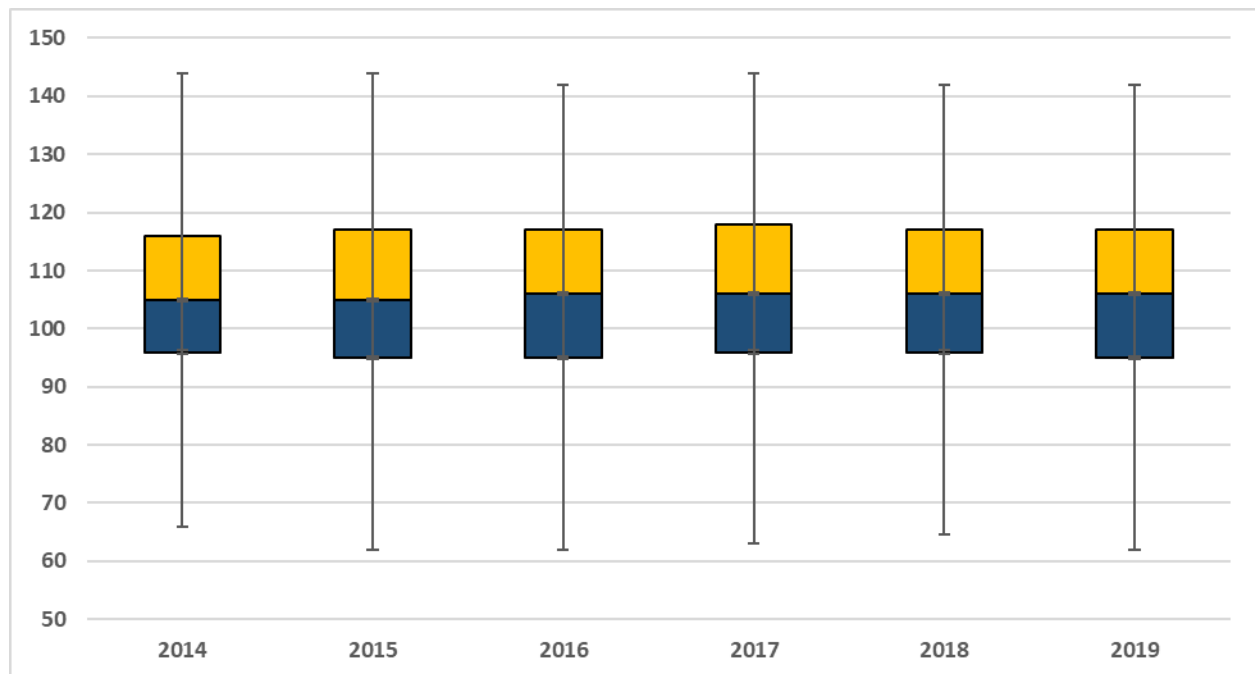


Table 17: Fall UG Degree Seeking New First-Time Student Enrollment History by College – Primary Major Only

	Fall 2014	Fall 2015	Fall 2016	Fall 2017	Fall 2018	Fall 2019	% Change 2014 to 2019
Education and Behavioral Sciences	345	319	366	331	317	319	-8%
Humanities and Social Sciences	289	344	320	336	350	292	1%
Monfort College of Business	202	184	197	159	182	251	24%
Natural and Health Sciences	632	699	719	722	664	631	0%
Performing and Visual Arts	174	206	217	232	206	201	16%
Undergrad Studies/Univ College	303	294	338	367	241	120	-60%
Total	1,945	2,046	2,157	2,147	1,960	1,814	-7%

Source: UNC official enrollment views aggregated across terms. Undergraduate degree seeking only.

Graph 16: Percent Change in UG Enrollment by College Fall 2014 Compared to Fall 2019

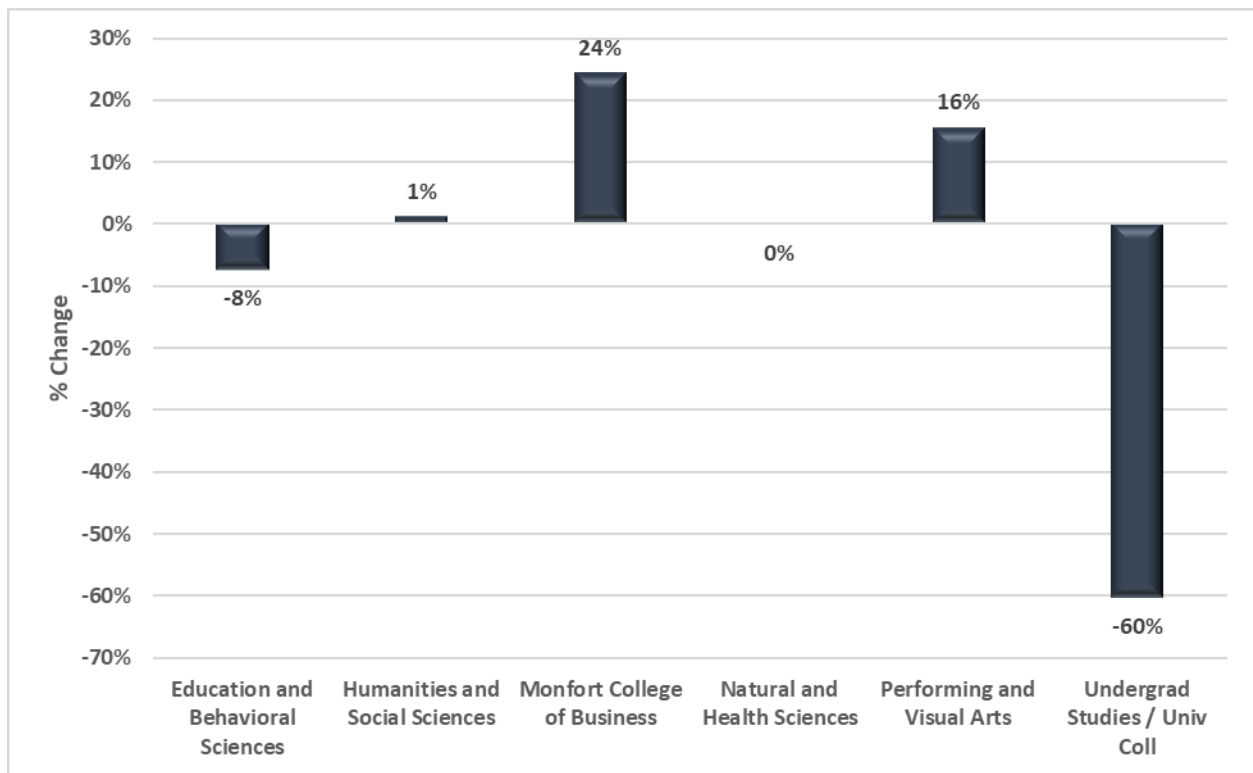


Table 18: Fall 2019 – UG Degree Seeking New First-Time Resident Student by Top 10 Enrolling Colorado Counties

Colorado County	Student Count	% of All
Weld County	313	18%
Arapahoe County	186	10%
Douglas County	167	9%
Adams County	154	9%
El Paso County	134	8%
Larimer County	119	7%
Jefferson County	116	7%
Denver County	80	4%
Boulder County	71	4%
Broomfield County	22	1%

Source: UAF SURDS files aggregated for fact book. Undergraduate degree seeking only.

Table 19: Fall 2019 – UG Degree Seeking New First-Time Out-of-State Student by Top 10 Enrolling States

State	Student Count	% of All
California	34	2%
Texas	23	1%
Illinois	17	1%
Hawaii	15	1%
Washington	14	<1%
Arizona	11	<1%
Nebraska	10	<1%
New Mexico	9	<1%
Oregon	8	<1%
Nevada	7	<1%

Source: UAF SURDS files aggregated for fact book. Undergraduate degree seeking only.

Table 20: Fall 2019 - UG Degree Seeking New First-Time Student - Top 10 Majors

Major	Student Count	% of All
Seeking Nursing	258	14%
Business Administration	227	13%
Psychology	137	8%
Biological Sciences	125	7%
Elementary Education	107	6%
Sport and Exercise Science	107	6%
Criminology and Criminal Justice	104	6%
Exploring Liberal Arts	77	4%
Art and Design	69	4%
Theatre Arts	52	3%

Source: UNC official enrollment views. Undergraduate degree seeking only.

New Undergraduate Transfer Students

Table 21: UG Degree Seeking Domestic New Transfer Applications, Admits and Enrolled with Yield Rate - Fall Terms 2014-2019

	Applied	Admitted	Enrolled	Yield
Fall 2014	1,495	1,440	786	55%
Fall 2015	1,510	1,462	726	50%
Fall 2016	1,502	1,436	776	54%
Fall 2017	1,288	1,227	649	53%
Fall 2018	1,208	1,153	589	51%
Fall 2019	1,164	1,124	593	53%

Source: SURDS Undergraduate Admissions File. Enrolled count is as of census. Degree seeking only. Fall applications only.

Graph 17: UG Degree Seeking New Transfer Admissions Activity

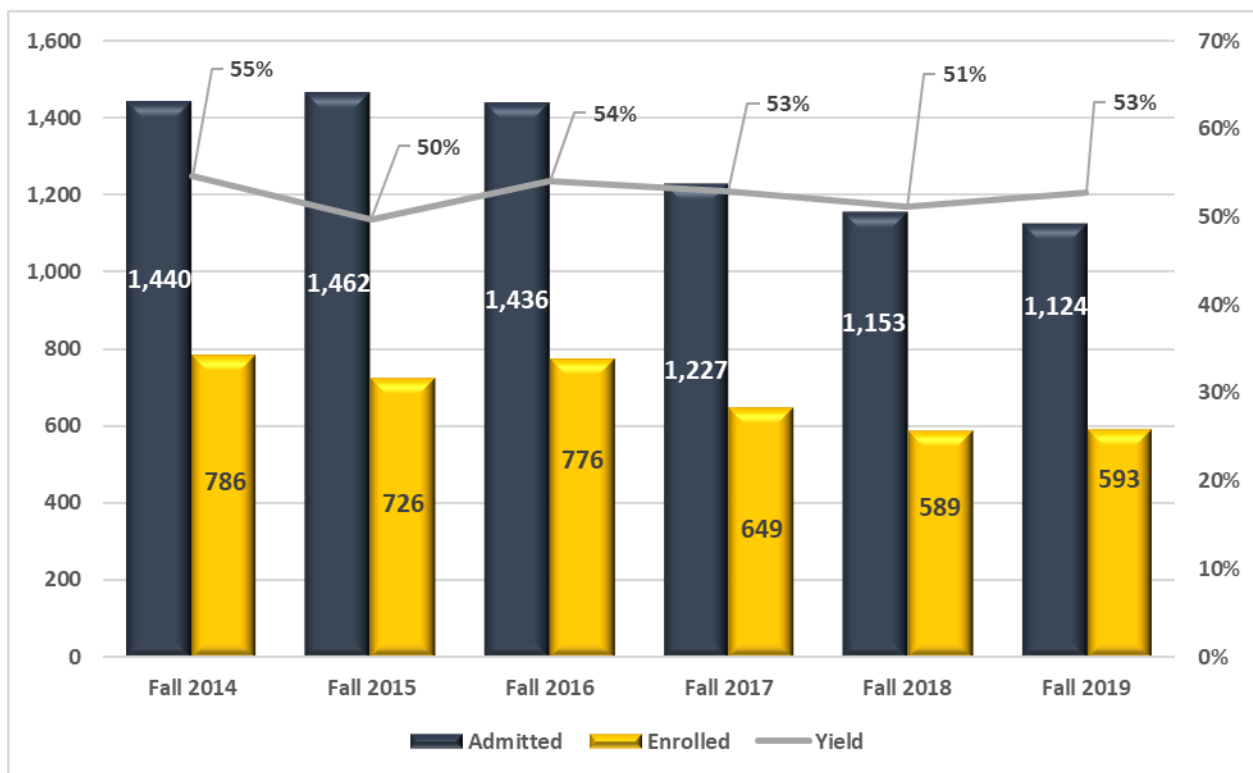


Table 22: Fall UG Degree Seeking New Transfer Profile – Number of Students by Sub-Population

	Fall 2014	Fall 2015	Fall 2016	Fall 2017	Fall 2018	Fall 2019
All Enrolled	799	737	791	806	725	689
In State	624 (78%)	572 (78%)	565 (71%)	612 (76%)	551 (76%)	546 (79%)
Out of State	175 (22%)	165 (22%)	226 (29%)	194 (24%)	174 (24%)	143 (21%)
Female	504 (63%)	459 (62%)	541 (68%)	562 (70%)	462 (64%)	490 (71%)
Male	295 (37%)	278 (38%)	250 (32%)	244 (30%)	263 (36%)	197 (29%)
Unknown	0 (<1%)	0 (<1%)	0 (<1%)	0 (<1%)	0 (<1%)	2 (<1%)
American Indian or Alaska Native	2 (<1%)	2 (<1%)	4 (<1%)	6 (<1%)	1 (<1%)	4 (<1%)
Asian	8 (1%)	6 (<1%)	13 (2%)	11 (1%)	16 (2%)	8 (1%)
Black or African American	19 (2%)	15 (2%)	25 (3%)	21 (3%)	20 (3%)	23 (3%)
Latinx/Hispanic	67 (8%)	72 (10%)	160 (20%)	157 (19%)	149 (21%)	144 (21%)
Multiracial	11 (1%)	10 (1%)	40 (5%)	32 (4%)	20 (3%)	27 (4%)
Native Hawaiian/ Pacific Islander	0 (<1%)	1 (<1%)	2 (<1%)	1 (<1%)	2 (<1%)	3 (<1%)
Temporary U.S. Resident	5 (<1%)	5 (<1%)	9 (1%)	15 (2%)	14 (2%)	13 (2%)
Unknown	448 (56%)	404 (55%)	10 (1%)	7 (<1%)	6 (<1%)	2 (<1%)
White	239 (30%)	222 (30%)	528 (67%)	556 (69%)	497 (69%)	465 (67%)
Pell Recipient	293 (37%)	289 (39%)	290 (37%)	275 (34%)	254 (35%)	244 (35%)
No Pell	506 (63%)	448 (61%)	501 (63%)	531 (66%)	471 (65%)	445 (65%)
First Generation	281 (35%)	262 (36%)	416 (53%)	394 (49%)	355 (49%)	342 (50%)
Not First Generation	518 (65%)	475 (64%)	375 (47%)	412 (51%)	370 (51%)	347 (50%)
Veteran	35 (4%)	49 (7%)	33 (4%)	38 (5%)	48 (7%)	37 (5%)
Veteran Dependent	9 (1%)	16 (2%)	4 (<1%)	4 (<1%)	13 (2%)	8 (1%)
Non-Veteran	755 (94%)	672 (91%)	754 (95%)	764 (95%)	664 (92%)	644 (93%)

Source: UNC official enrollment views. Undergraduate degree seeking only. Includes those admitted to summer or fall and enrolled in fall term as new transfer.

Table 23: UG Degree Seeking New Transfer – Academic Preparation Trends

	Fall 2014	Fall 2015	Fall 2016	Fall 2017	Fall 2018	Fall 2019
Avg. Transfer GPA	3.03	3.04	3.07	3.03	3.04	3.07
Median Transfer GPA	3.03	3.07	3.13	3.10	3.10	3.12
25th Percentile	2.62	2.63	2.69	2.66	2.66	2.68
75th Percentile	3.48	3.49	3.49	3.50	3.50	3.58

Source: UAF SURDS aggregated for Fact Book. Undergraduate degree seeking only.

Graph 18: Fall Enrolling Degree Seeking New Transfers – Transfer GPA Box Plots

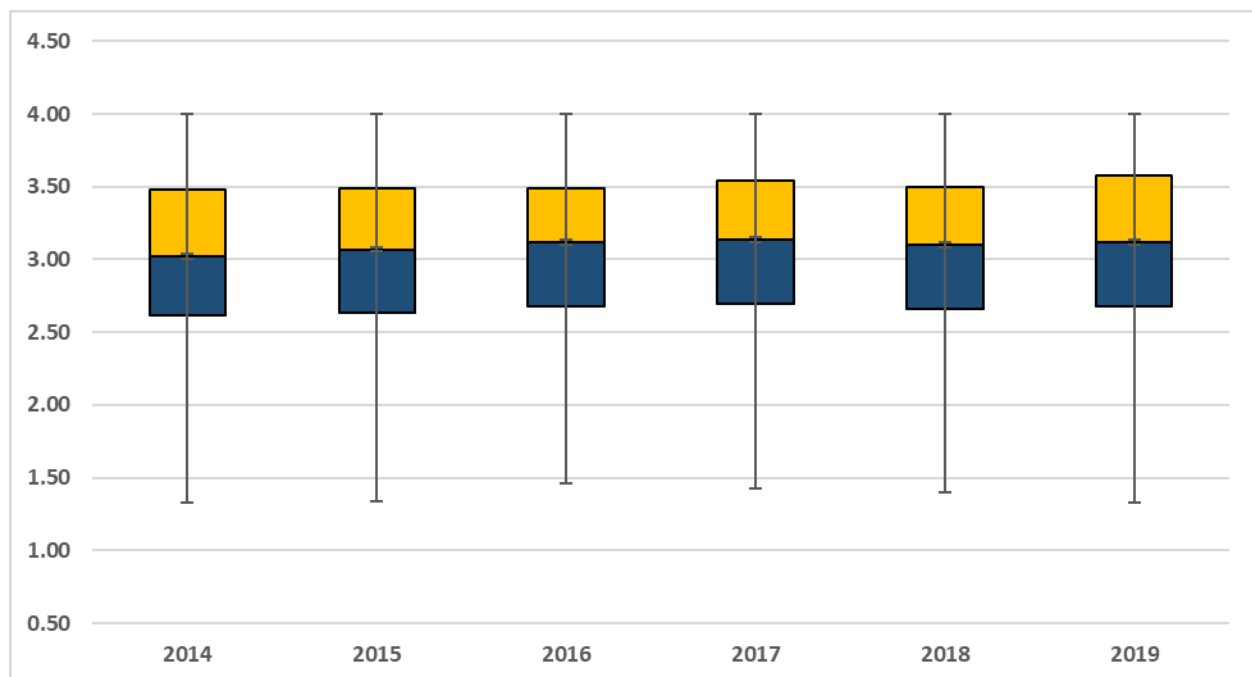


Table 24: Fall UG Transfer Enrollment History – By College – Primary Major Only

	Fall 2014	Fall 2015	Fall 2016	Fall 2017	Fall 2018	Fall 2019	% Change 2014 to 2019
Education and Behavioral Sciences	154	169	184	205	159	180	17%
Humanities and Social Sciences	144	130	144	121	122	119	-17%
Monfort College of Business	67	64	82	59	53	74	10%
Natural and Health Sciences	336	297	287	335	295	270	-20%
Performing and Visual Arts	39	34	49	39	47	36	-8%
Undergrad Studies/Univ College	59	43	45	47	49	10	-83%
Total	799	737	791	806	725	689	-14%

Source: UNC official enrollment views aggregated across terms. Undergraduate degree seeking only.

Graph 19: New UG Transfers - Percent Change in Enrollment by College Fall 2014 Compared to Fall 2019

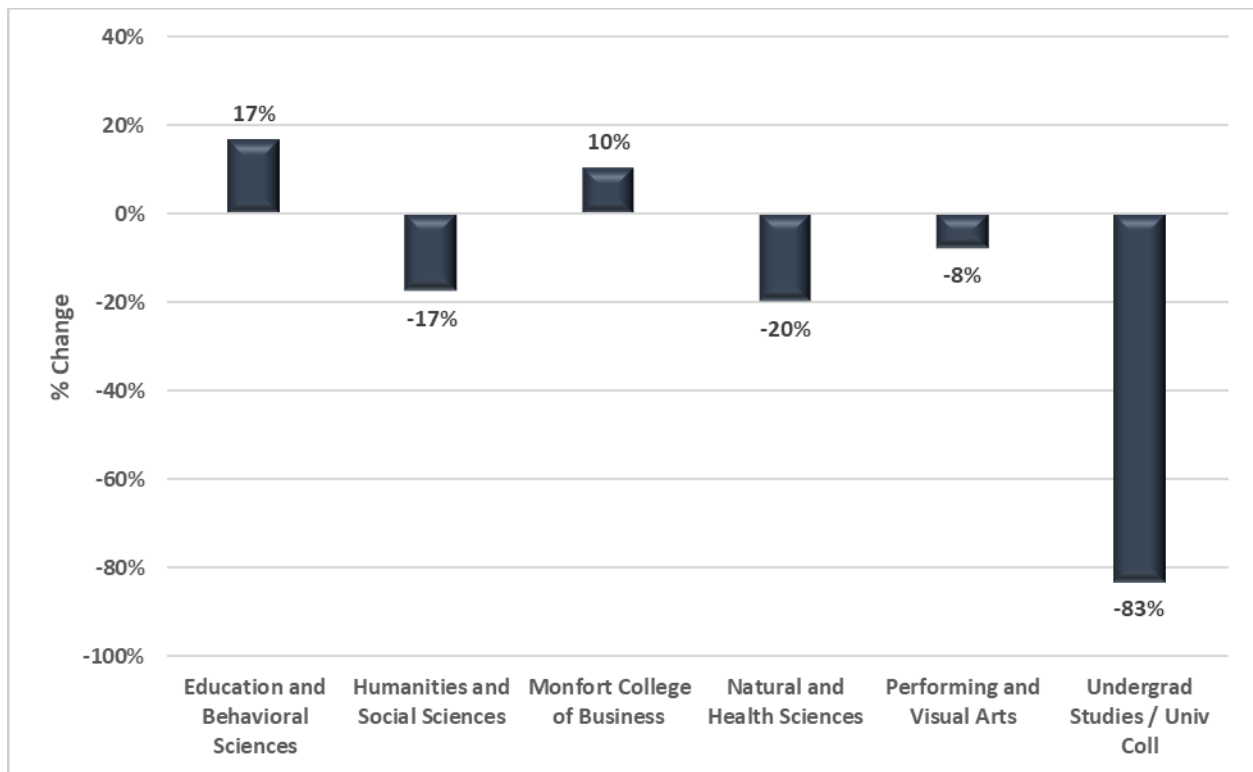


Table 25: New UG Transfers- Top 10 Majors – Fall 2019

Major	Student Count	% of All
Psychology	65	9%
Elementary Education	53	8%
Seeking Nursing	48	7%
Nursing	48	7%
Business Administration	46	7%
Biological Sciences	41	6%
Sport and Exercise Science	33	5%
Audiology/Speech Language Science	31	4%
Special Education	21	3%
Seeking Business	21	3%

Source: UNC official enrollment views. Undergraduate degree seeking only.

New Graduate Students

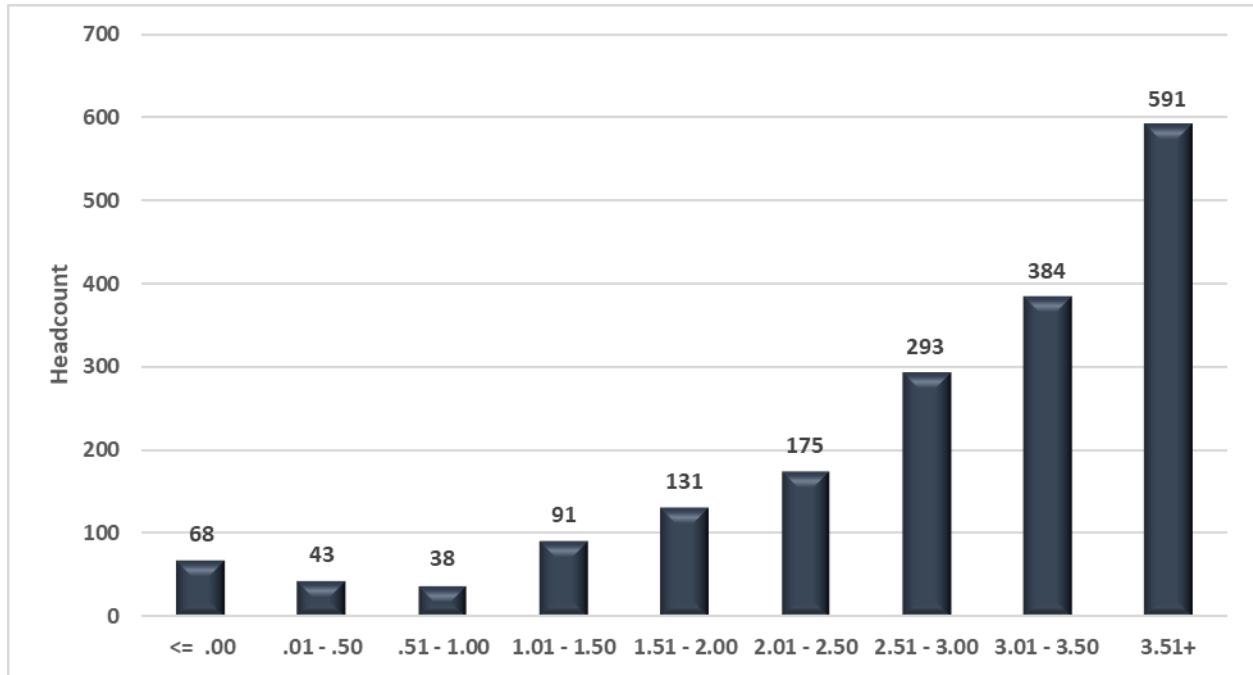
Table 26: Fall GR Degree Seeking New Student Profile – Number of Students by Sub-Population

	Fall 2014	Fall 2015	Fall 2016	Fall 2017	Fall 2018	Fall 2019
All Enrolled	714	861	930	1,001	886	961
In State	465 (65%)	562 (65%)	555 (60%)	593 (59%)	532 (60%)	571 (59%)
Out of State	249 (35%)	299 (35%)	375 (40%)	408 (41%)	354 (40%)	390 (41%)
Female	510 (71%)	617 (72%)	702 (75%)	749 (75%)	650 (73%)	692 (72%)
Male	204 (29%)	244 (28%)	228 (25%)	252 (25%)	236 (27%)	260 (27%)
Unknown	0 (<1%)	0 (<1%)	0 (<1%)	0 (<1%)	0 (<1%)	9 (<1%)
American Indian or Alaska Native	2 (<1%)	2 (<1%)	3 (<1%)	5 (<1%)	3 (<1%)	1 (<1%)
Asian	10 (1%)	17 (2%)	16 (2%)	15 (1%)	22 (2%)	23 (2%)
Black or African American	24 (3%)	21 (2%)	29 (3%)	24 (2%)	20 (2%)	29 (3%)
Latinx/Hispanic	49 (7%)	73 (8%)	99 (11%)	89 (9%)	93 (10%)	119 (12%)
Multiracial	20 (3%)	21 (2%)	14 (2%)	36 (4%)	35 (4%)	20 (2%)
Native Hawaiian/ Pacific Islander	0 (<1%)	1 (<1%)	0 (<1%)	1 (<1%)	0 (<1%)	4 (<1%)
Temporary U.S. Resident	31 (4%)	32 (4%)	48 (5%)	65 (6%)	32 (4%)	26 (3%)
Unknown	27 (4%)	32 (4%)	13 (1%)	19 (2%)	8 (<1%)	5 (<1%)
White	551 (77%)	662 (77%)	708 (76%)	747 (75%)	673 (76%)	734 (76%)
Veteran	22 (3%)	33 (4%)	17 (2%)	13 (1%)	26 (3%)	37 (4%)
Veteran Dependent	18 (3%)	12 (1%)	4 (<1%)	4 (<1%)	21 (2%)	27 (3%)
Non-Veteran	674 (94%)	816 (95%)	909 (98%)	984 (98%)	839 (95%)	897 (93%)

Source: UNC official enrollment views. Graduate degree seeking only. Includes those admitted to summer or fall and enrolled in fall term as a new student.

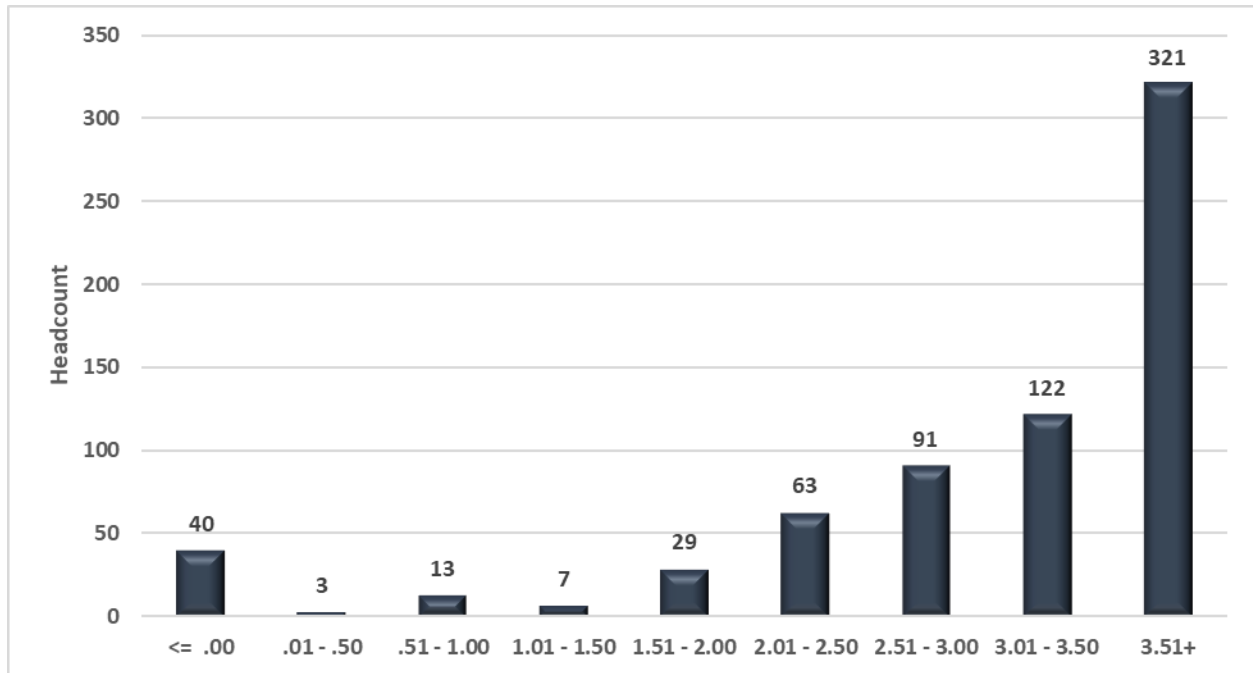
Section III: Undergraduate Student Success Outcomes

Graph 20: UG Degree Seeking New First Time Students' First Fall Term UNC GPA – Fall 2019 Entering



Source: UNC official enrollment views. Undergraduate degree seeking only.

Graph 21: UG Degree Seeking New Transfers' First Fall Term UNC GPA – Fall 2019 Entering



Source: UNC official enrollment views. Undergraduate degree seeking only.

UG Degree Seeking New First Time Students - Fall 2019 Term UNC GPA

Table 27: UNC End of Term GPA Descriptive Statistics by Index Group

CCHE Index Group	# of Students	First Term Ave UNC GPA	Standard Deviation
LTE 93	388	2.13	1.05
94 - 99	275	2.44	1.07
100 - 111	466	2.83	0.96
112 - 128	536	3.37	0.75
GTE 129	125	3.74	0.57
Overall	1,790	2.84	1.06

Source: UNC official enrollment views. Degree seeking students only. The CCHE Index is calculated by using a combination of a student's HS GPA, HS rank, and ACT/SAT score.

Graph 22: Index Group and Average GPA

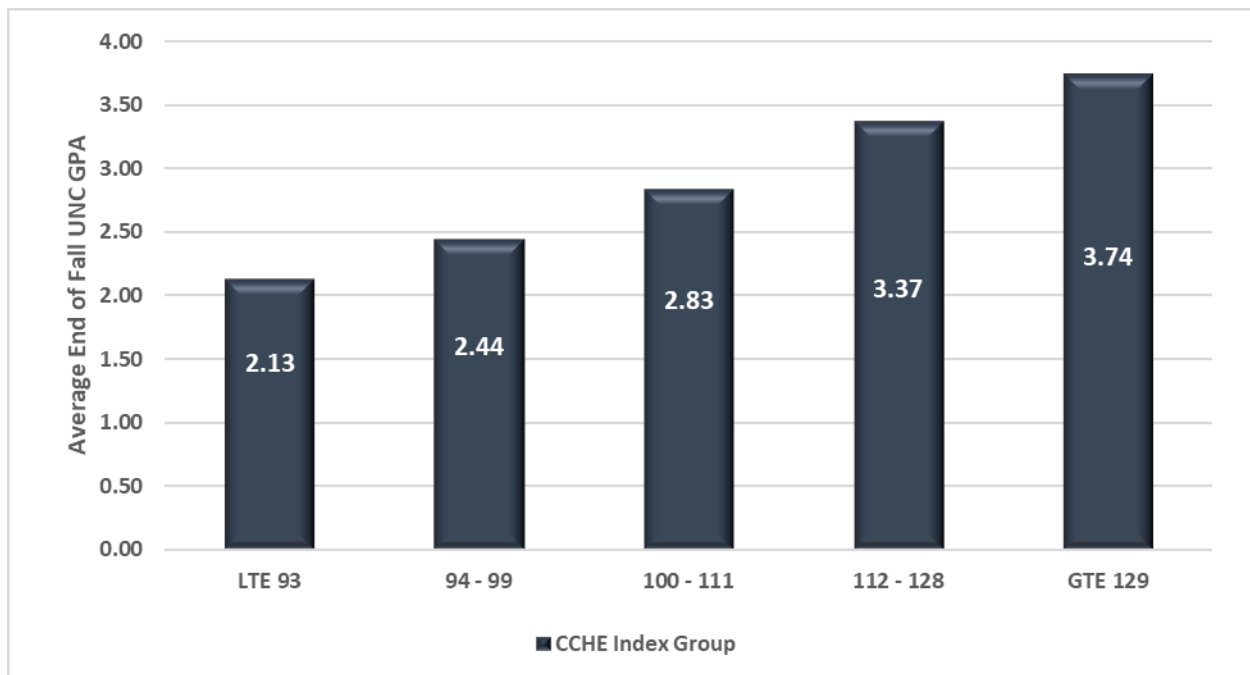
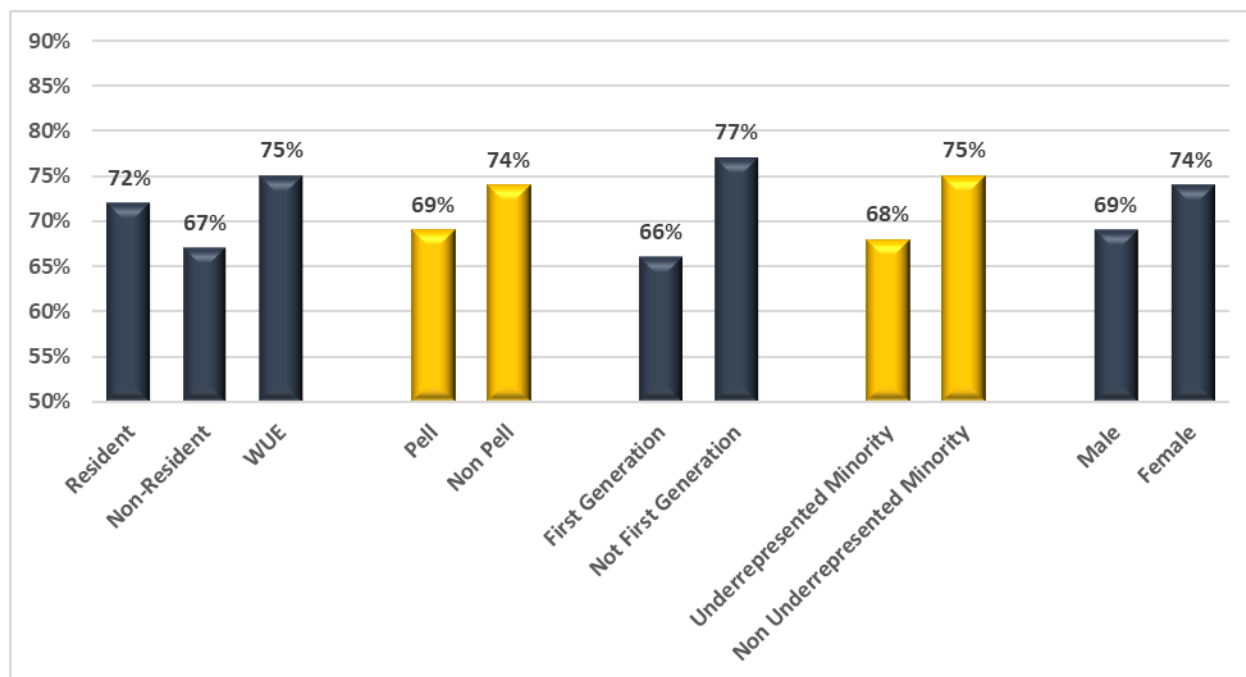


Table 28: Retention Rates of New UG Full time Degree Seeking First-Time and Transfer Students – Fall Entering

		New First Time					Transfer				
		Fall 2014	Fall 2015	Fall 2016	Fall 2017	Fall 2018	Fall 2014	Fall 2015	Fall 2016	Fall 2017	Fall 2018
All Students	%	72%	71%	71%	72%	72%	78%	81%	80%	80%	80%
	Total	1,921	2,022	2,143	2,132	1,937	666	621	649	621	548
Residency Status											
Resident	%	71%	70%	72%	73%	72%	80%	84%	82%	81%	81%
	Total	1,683	1,740	1,815	1,801	1,620	534	488	476	492	432
Non-Resident	%	73%	67%	68%	73%	67%	73%	66%	75%	76%	75%
	Total	82	114	137	150	156	63	65	88	85	65
WUE	%	77%	76%	72%	67%	75%	68%	75%	78%	80%	84%
	Total	156	168	191	181	161	69	68	85	44	51
Pell Status											
Pell	%	64%	66%	67%	67%	69%	74%	76%	81%	82%	79%
	Total	692	706	745	726	691	262	254	257	236	206
Non Pell	%	76%	73%	74%	75%	74%	81%	85%	80%	79%	81%
	Total	1,229	1,316	1,398	1,406	1,246	404	367	392	385	342
First Generation Status											
First Generation	%	65%	66%	67%	67%	66%	75%	79%	78%	77%	76%
	Total	694	769	917	938	896	241	224	337	294	261
Not First Generation	%	76%	74%	75%	76%	77%	80%	83%	82%	83%	84%
	Total	1,227	1,253	1,226	1,194	1,041	425	397	312	327	287
Race/Ethnicity											
American Indian or Alaska Native	%	75%	67%	64%	71%	70%	100%	100%	33%	50%	100%
	Total	8	6	11	7	10	1	2	3	4	1
Asian	%	69%	87%	65%	70%	76%	83%	100%	85%	86%	92%
	Total	36	45	54	47	50	6	5	13	7	12
Black or African American	%	66%	64%	78%	68%	71%	71%	79%	90%	65%	85%
	Total	113	111	76	126	89	17	14	20	17	13
Latinx/Hispanic	%	65%	67%	67%	67%	67%	80%	88%	79%	89%	77%
	Total	434	496	493	525	516	59	67	137	125	115
Multiracial	%	71%	66%	66%	62%	71%	80%	90%	85%	57%	67%
	Total	95	103	117	116	108	10	10	33	28	18
Native Hawaiian/ Pacific Islander	%	50%	43%	56%	80%	100%	N/A	100%	50%	N/A	100%
	Total	4	7	9	5	4	0	1	2	0	2
Temporary U.S. Resident	%	100%	100%	63%	89%	64%	75%	100%	67%	69%	100%
	Total	7	9	16	9	11	4	5	9	13	13
Unknown	%	79%	67%	60%	82%	83%	77%	79%	80%	60%	100%
	Total	29	21	5	11	18	366	318	5	5	2
White	%	75%	73%	74%	75%	75%	81%	80%	81%	80%	80%
	Total	1,195	1,224	1,362	1,286	1,131	203	199	427	422	372
Gender											
Male	%	71%	70%	69%	71%	69%	74%	79%	81%	75%	82%
	Total	651	733	764	732	690	268	253	231	211	218
Female	%	72%	71%	73%	73%	74%	81%	83%	80%	82%	79%
	Total	1,270	1,289	1,379	1,400	1,247	398	368	418	410	330
Unknown	%	N/A	N/A	N/A	N/A	N/A	N/A	N/A	N/A	N/A	N/A
	Total	0	0	0	0	0	0	0	0	0	0

Source: Special report created in IRAS for Fact Book retention reporting. Full time degree seeking students only.

Graph 23: New Degree Seeking First-time Full time UG Fall 2018 to Fall 2019 Retention by Student Traits



Graph 24: New Degree Seeking Transfer Full time UG Fall 2018 to Fall 2019 Retention by Student Traits

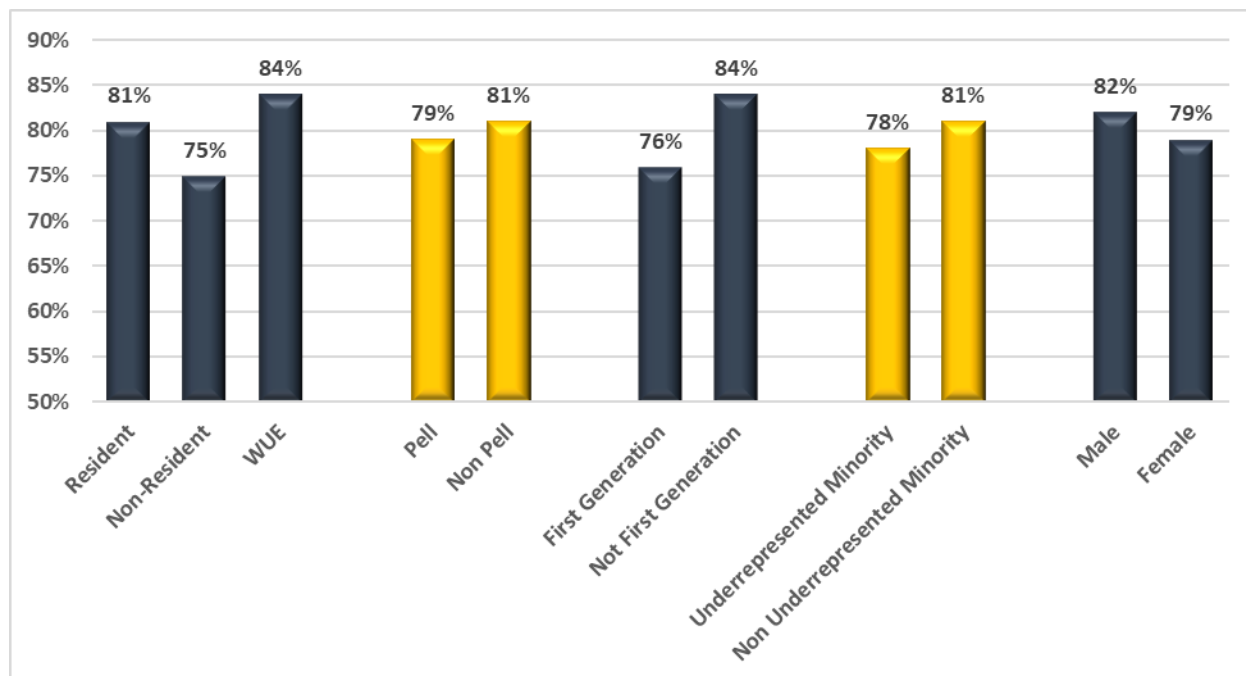


Table 29: Four Year Graduation Rates of New UG Full time Degree Seeking First-Time and Transfer Students – Fall Entering Only

		New First Time					Transfer				
		Fall 2011	Fall 2012	Fall 2013	Fall 2014	Fall 2015	Fall 2011	Fall 2012	Fall 2013	Fall 2014	Fall 2015
All Students	%	28%	28%	31%	33%	36%	60%	59%	62%	63%	67%
	Total	2,264	2,188	1,965	1,921	2,022	741	693	630	666	621
Residency Status											
Resident	%	28%	27%	30%	32%	36%	60%	60%	63%	63%	69%
	Total	2,027	1,948	1,706	1,683	1,740	630	567	525	534	488
Non-Resident	%	33%	29%	41%	34%	30%	58%	44%	53%	60%	57%
	Total	97	104	109	82	114	66	62	43	63	65
WUE	%	31%	43%	36%	38%	38%	64%	67%	55%	62%	62%
	Total	140	136	150	156	168	45	64	62	69	68
Pell Status											
Pell	%	23%	22%	24%	23%	26%	58%	54%	55%	58%	57%
	Total	828	789	728	692	706	300	314	242	262	254
Non Pell	%	31%	32%	35%	38%	41%	61%	64%	65%	66%	74%
	Total	1,436	1,399	1,237	1,229	1,316	441	379	388	404	367
First Generation Status											
First Generation	%	21%	24%	26%	23%	28%	62%	56%	58%	64%	64%
	Total	511	875	741	694	769	157	258	224	241	224
Not First Generation	%	30%	31%	34%	38%	40%	59%	61%	64%	62%	69%
	Total	1,753	1,313	1,224	1,227	1,253	584	435	406	425	397
Race/Ethnicity											
American Indian or Alaska Native	%	22%	11%	0%	50%	17%	50%	50%	100%	100%	50%
	Total	9	9	4	8	6	4	2	2	1	2
Asian	%	31%	21%	27%	36%	44%	83%	50%	50%	67%	80%
	Total	36	39	37	36	45	6	4	4	6	5
Black or African American	%	27%	21%	26%	30%	32%	54%	50%	50%	47%	21%
	Total	106	98	99	113	111	13	10	16	17	14
Latinx/Hispanic	%	21%	26%	26%	21%	28%	48%	53%	59%	61%	66%
	Total	410	421	417	434	496	80	88	64	59	67
Multiracial	%	21%	23%	25%	32%	32%	57%	40%	27%	80%	50%
	Total	96	93	104	95	103	14	5	15	10	10
Native Hawaiian/ Pacific Islander	%	N/A	20%	67%	25%	14%	N/A	100%	N/A	N/A	100%
	Total	0	5	6	4	7	0	1	0	0	1
Temporary U.S. Resident	%	60%	55%	55%	71%	56%	100%	0%	100%	100%	80%
	Total	5	11	20	7	9	7	3	2	4	5
Unknown	%	31%	22%	22%	48%	29%	62%	61%	61%	62%	68%
	Total	32	49	41	29	21	338	345	321	366	318
White	%	31%	30%	34%	37%	39%	60%	61%	66%	64%	70%
	Total	1,570	1,463	1,237	1,195	1,224	279	235	206	203	199
Gender											
Male	%	19%	20%	25%	26%	31%	55%	56%	58%	54%	62%
	Total	854	852	719	651	733	323	293	248	268	253
Female	%	34%	33%	34%	36%	38%	63%	62%	64%	69%	71%
	Total	1,410	1,336	1,246	1,270	1,289	418	398	380	398	368
Unknown	%	N/A	N/A	N/A	N/A	N/A	N/A	50.0%	0.0%	N/A	N/A
	Total	0	0	0	0	0	0	2	2	0	0

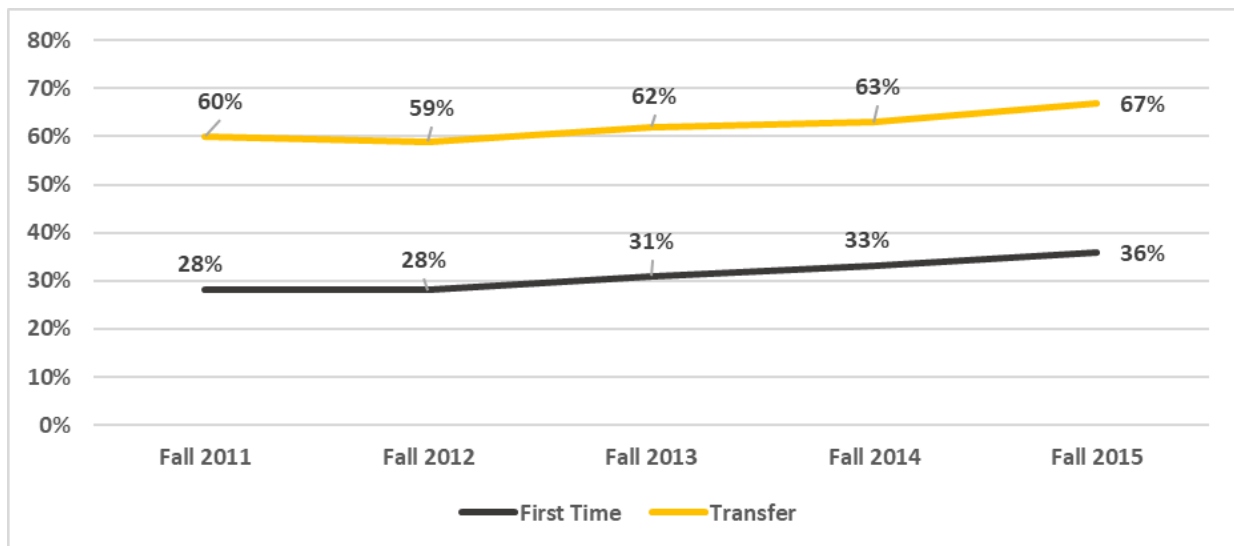
Source: Special report created in IRAS for Fact Book graduation reporting. Full time degree seeking students only.

Table 30: Six Year Graduation Rates of New UG Full time Degree Seeking First-Time and Transfer UG Students – Fall Entering Only

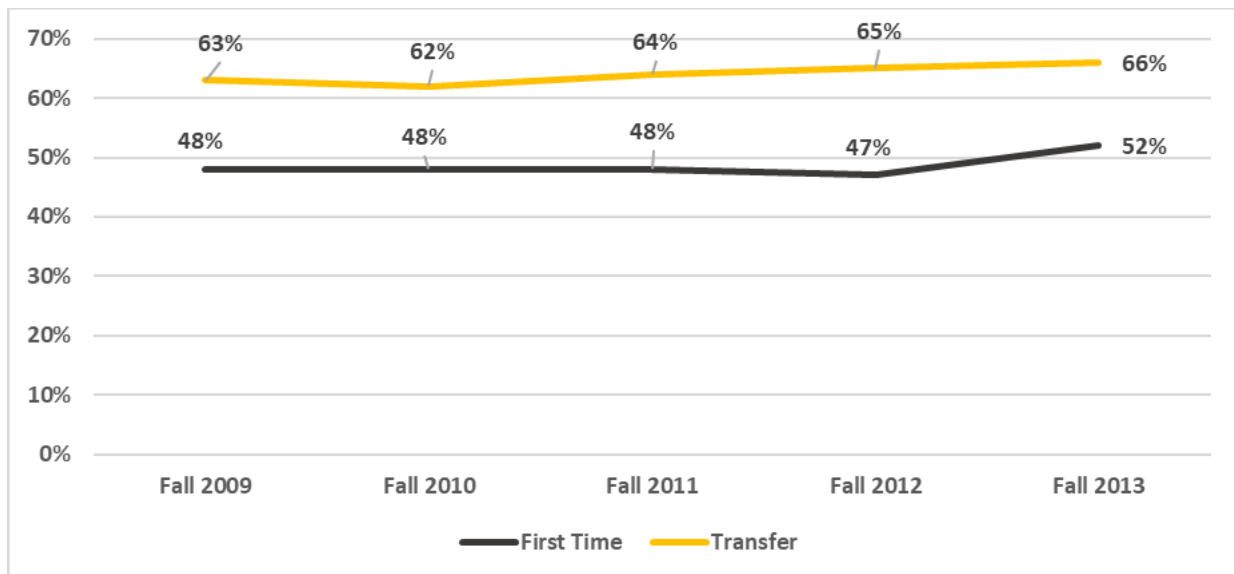
		New First Time					Transfer				
		Fall 2009	Fall 2010	Fall 2011	Fall 2012	Fall 2013	Fall 2009	Fall 2010	Fall 2011	Fall 2012	Fall 2013
All Students	%	48%	48%	48%	47%	52%	63%	62%	64%	65%	66%
	Total	2,275	2,221	2,264	2,188	1,963	645	747	741	693	630
Residency Status											
Resident	%	47%	48%	48%	46%	52%	64%	61%	63%	66%	68%
	Total	2,056	2,018	2,027	1,948	1,704	576	620	630	567	525
Non-Resident	%	49%	51%	51%	48%	59%	61%	67%	62%	48%	56%
	Total	219	203	97	104	109	69	127	66	62	43
WUE	%			48%	60%	54%			69%	70%	56%
	Total			140	136	150			45	64	62
Pell Status											
Pell	%	48%	44%	42%	39%	47%	69%	57%	62%	60%	60%
	Total	804	796	828	789	728	311	299	300	314	242
Non Pell	%	47%	51%	51%	52%	55%	57%	66%	65%	68%	69%
	Total	1,471	1,425	1,463	1,399	1,235	334	448	441	379	388
First Generation Status											
First Generation	%	42%	44%	37%	41%	46%	60%	57%	66%	60%	63%
	Total	820	852	511	875	741	226	299	157	258	224
Not First Generation	%	51%	51%	51%	51%	56%	65%	66%	63%	67%	67%
	Total	1,455	1,369	1,753	1,313	1,222	419	448	584	435	406
Race/Ethnicity											
American Indian or Alaska Native	%	25%	45%	44%	22%	25%	50%	86%	100%	50%	100%
	Total	16	11	9	9	4	4	7	4	2	2
Asian	%	36%	45%	50%	38%	59%	38%	83%	83%	50%	50%
	Total	36	44	36	39	37	13	12	6	4	4
Black or African American	%	36%	41%	41%	33%	46%	40%	52%	54%	50%	56%
	Total	101	128	106	98	99	15	23	13	10	16
Latinx/Hispanic	%	44%	44%	41%	45%	48%	66%	57%	55%	63%	66%
	Total	317	349	410	421	417	61	81	80	88	64
Multiracial	%	49%	32%	31%	42%	50%	67%	60%	64%	60%	27%
	Total	53	85	96	93	104	3	5	14	5	15
Native Hawaiian/Pacific Islander	%	36%	N/A	N/A	40%	67%	N/A	N/A	N/A	100%	N/A
	Total	11	0	0	5	6	0	0	0	1	0
Temporary U.S. Resident	%	50%	100%	80%	64%	75%	50%	100%	100%	33%	100%
	Total	4	2	5	11	20	2	1	7	3	2
Unknown	%	34%	55%	59%	37%	41%	49%	63%	64%	65%	66%
	Total	29	65	32	49	41	174	312	338	345	321
White	%	50%	51%	51%	50%	54%	71%	63%	64%	66%	68%
	Total	1,708	1,537	1,570	1,463	1,235	373	306	279	235	206
Gender											
Male	%	39%	42%	40%	38%	46%	61%	59%	59%	60%	63%
	Total	915	801	854	852	717	292	302	323	293	248
Female	%	53%	52%	52%	53%	56%	65%	64%	67%	68%	68%
	Total	1,360	1,420	1,410	1,336	1,246	352	445	418	398	380
Unknown	%	N/A	N/A	N/A	N/A	N/A	100.0%	N/A	N/A	100.0%	0.0%
	Total	0	0	0	0	0	1	0	0	2	2

Source: Special report created in IRAS for Fact Book graduation reporting. Note: WUE was coded differently across the longitudinal terms included here. Full time degree seeking students only.

Graph 25: 4 Year UG Degree Seeking Graduation Rates by Student Type – 5 Year Trends



Graph 26: 6 Year UG Degree Seeking Graduation Rates by Student Type – 5 Year Trends



Section IV: Degrees Awarded – Undergraduate and Graduate

Table 31: Degrees Awarded by College and Degree Category

College	Degree Type	AY 14 - 15	AY 15 - 16	AY 16 - 17	AY 17 - 18	AY 18 - 19
Education & Behavioral Sciences	Bachelor's	252	279	317	382	360
	Master's	369	476	412	558	546
	Doctorate	53	44	54	58	41
	Total	674	799	783	998	947
Humanities & Social Sciences	Bachelor's	496	467	436	438	463
	Master's	45	28	32	25	33
	Total	541	495	468	463	496
Monfort College of Business	Bachelor's	211	212	223	224	231
	Master's	13	17	20	14	13
	Total	224	229	243	238	244
Natural & Health Sciences	Bachelor's	702	612	648	696	725
	Master's	175	162	137	215	234
	Doctorate	25	35	43	47	31
	Total	902	809	828	958	990
Performing & Visual Arts	Bachelor's	193	161	157	178	186
	Master's	49	46	60	62	87
	Doctorate	4	10	11	8	6
	Total	246	217	228	248	279
University College	Bachelor's	235	177	110	51	16
	Total	235	177	110	51	16
Total	Bachelor's	2,089	1,908	1,891	1,969	1,981
	Master's	651	729	661	874	913
	Doctorate	82	89	108	113	78
	Total	2,822	2,726	2,660	2,956	2,972

Source: Special report created in IRAS for Fact Book. HSS and MCB do not have doctoral programs and UC only offers undergraduate degrees. Over the longitudinal history displayed here, some programs have moved colleges. If a student earns multiple degrees from different colleges, they can be counted more than once. The students that earn degrees from different colleges creates slightly higher totals than the next two charts, which are one count per student per student level.

Table 32: Degrees Awarded History – By Sub-Population – Undergraduate

	2014 - 2015	2015 - 2016	2016 - 2017	2017 - 2018	2018 - 2019
All UG Graduates	2,049	1,869	1,852	1,929	1,946
Resident	1,806 (88%)	1,634 (87%)	1,614 (87%)	1,631 (85%)	1,659 (85%)
Non-Resident	138 (7%)	105 (6%)	102 (6%)	121 (6%)	132 (7%)
WUE	105 (5%)	130 (7%)	136 (7%)	177 (9%)	155 (8%)
Female	1,345 (66%)	1,252 (67%)	1,241 (67%)	1,287 (67%)	1,292 (66%)
Male	702 (34%)	615 (33%)	610 (33%)	642 (33%)	654 (34%)
Unknown	2 (<1%)	2 (<1%)	1 (<1%)	0 (<1%)	0 (<1%)
American Indian or Alaska Native	6 (<1%)	7 (<1%)	5 (<1%)	5 (<1%)	4 (<1%)
Asian	27 (1%)	23 (1%)	31 (2%)	34 (2%)	39 (2%)
Black or African American	70 (3%)	55 (3%)	61 (3%)	66 (3%)	85 (4%)
Latinx/Hispanic	276 (13%)	285 (15%)	279 (15%)	301 (16%)	341 (18%)
Multiracial	35 (2%)	42 (2%)	51 (3%)	89 (5%)	75 (4%)
Native Hawaiian/ Pacific Islander	5 (<1%)	3 (<1%)	5 (<1%)	2 (<1%)	2 (<1%)
Temporary U.S. Resident	26 (1%)	20 (1%)	30 (2%)	28 (1%)	32 (2%)
Unknown	427 (21%)	363 (19%)	356 (19%)	269 (14%)	139 (7%)
White	1,177 (57%)	1,071 (57%)	1,034 (56%)	1,135 (59%)	1,229 (63%)
Veteran	50 (2%)	47 (3%)	36 (2%)	40 (2%)	59 (3%)
Veteran Dependent	17 (<1%)	46 (2%)	34 (2%)	40 (2%)	49 (3%)
Non-Veteran	1,982 (97%)	1,776 (95%)	1,782 (96%)	1,849 (96%)	1,838 (94%)
Pell Recipient	648 (32%)	542 (29%)	547 (30%)	584 (30%)	637 (33%)
No Pell	1,401 (68%)	1,327 (71%)	1,305 (70%)	1,345 (70%)	1,309 (67%)
First Generation	691 (34%)	650 (35%)	653 (35%)	749 (39%)	762 (39%)
Not First Generation	1,358 (66%)	1,219 (65%)	1,199 (65%)	1,180 (61%)	1,184 (61%)

Source: Special report created in IRAS for Fact Book. This is one count per person per student level.

Table 33: Degrees Awarded History – By Sub-Population – Graduate

	2014 - 2015	2015 - 2016	2016 - 2017	2017 - 2018	2018 - 2019
All GR Graduates	731	817	769	987	988
Resident	563 (77%)	643 (79%)	557 (72%)	704 (71%)	731 (74%)
Non-Resident	149 (20%)	153 (19%)	183 (24%)	233 (24%)	234 (24%)
WICHE	19 (3%)	21 (3%)	29 (4%)	50 (5%)	23 (2%)
Female	513 (70%)	597 (73%)	558 (73%)	740 (75%)	774 (78%)
Male	218 (30%)	220 (27%)	211 (27%)	247 (25%)	214 (22%)
Unknown	0 (<1%)	0 (<1%)	0 (<1%)	0 (<1%)	0 (<1%)
American Indian or Alaska Native	2 (<1%)	2 (<1%)	3 (<1%)	2 (<1%)	2 (<1%)
Asian	10 (1%)	9 (1%)	6 (<1%)	25 (3%)	19 (2%)
Black or African American	12 (2%)	14 (2%)	23 (3%)	20 (2%)	13 (1%)
Latinx/Hispanic	65 (9%)	52 (6%)	60 (8%)	85 (9%)	85 (9%)
Multiracial	28 (4%)	19 (2%)	23 (3%)	19 (2%)	19 (2%)
Native Hawaiian/ Pacific Islander	2 (<1%)	1 (<1%)	0 (<1%)	0 (<1%)	1 (<1%)
Temporary U.S. Resident	49 (7%)	54 (7%)	46 (6%)	54 (5%)	61 (6%)
Unknown	15 (2%)	28 (3%)	12 (2%)	30 (3%)	24 (2%)
White	548 (75%)	638 (78%)	596 (78%)	752 (76%)	764 (77%)
Veteran	8 (1%)	16 (2%)	32 (4%)	21 (2%)	21 (2%)
Veteran Dependent	6 (<1%)	14 (2%)	14 (2%)	19 (2%)	13 (1%)
Non-Veteran	717 (98%)	787 (96%)	723 (94%)	947 (96%)	954 (97%)

Source: Special report created in IRAS for Fact Book. This is one count per person per student level.

Section V: Staffing Information

Table 34: Overall Staff Counts Instructional/Non-Instructional

	Fall 2014	Fall 2015	Fall 2016	Fall 2017	Fall 2018	Fall 2019
Total Staff Counts	1,702	1,740	1,764	1,820	1,823	1,717
Full time Instructional Staff	490 (29%)	485 (28%)	485 (27%)	509 (28%)	514 (28%)	482 (28%)
Part time Instructional Staff	280 (16%)	314 (18%)	305 (17%)	328 (18%)	358 (20%)	339 (20%)
Full time Non-Instructional Staff	867 (51%)	882 (51%)	916 (52%)	920 (51%)	900 (49%)	852 (50%)
Part time Non-Instructional Staff	65 (4%)	59 (3%)	58 (3%)	63 (3%)	51 (3%)	44 (2%)

Source: All HR Data comes from Data Freezes on 11/01 of the year selected. The data is used for IPEDS reporting and the results are the same as seen in IPEDS HR reports.

Graph 27: Fall 2019 Percentage of Staff Instructional/Non-Instructional

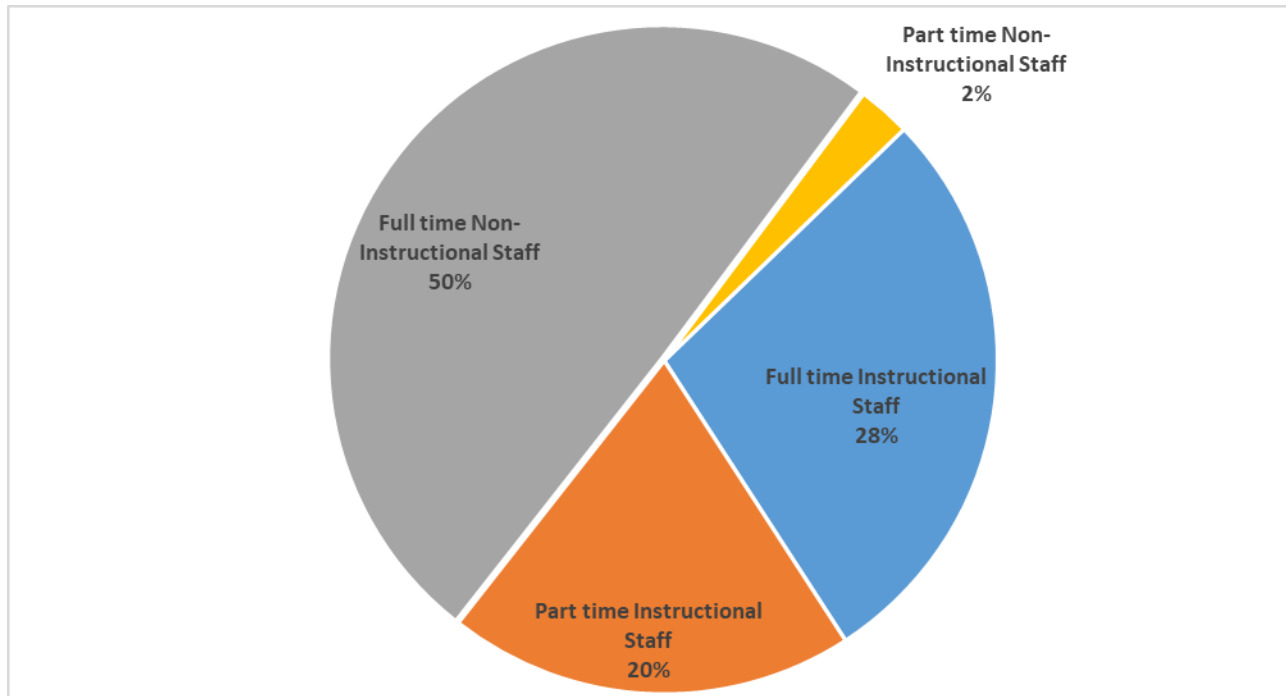


Table 35: Non-Instructional Staff Counts by Time Status and Gender

Non-Instructional Staff	Gender	Fall 2014	Fall 2015	Fall 2016	Fall 2017	Fall 2018	Fall 2019
Full time Staff	Men	363 (42%)	380 (43%)	410 (45%)	398 (43%)	398 (44%)	388 (46%)
	Women	504 (58%)	502 (57%)	506 (55%)	522 (57%)	502 (56%)	464 (54%)
Part time Staff	Men	12 (18%)	6 (10%)	7 (12%)	10 (16%)	8 (16%)	9 (20%)
	Women	53 (82%)	53 (90%)	51 (88%)	53 (84%)	43 (84%)	35 (80%)
Total Non-Instructional Staff	Men	375 (40%)	386 (41%)	417 (43%)	408 (42%)	406 (43%)	397 (44%)
	Women	557 (60%)	555 (59%)	557 (57%)	575 (58%)	545 (57%)	499 (56%)

Source: All HR Data comes from Data Freezes on 11/01 of the year selected. The data is used for IPEDS reporting and the results are the same as seen in IPEDS HR reports.

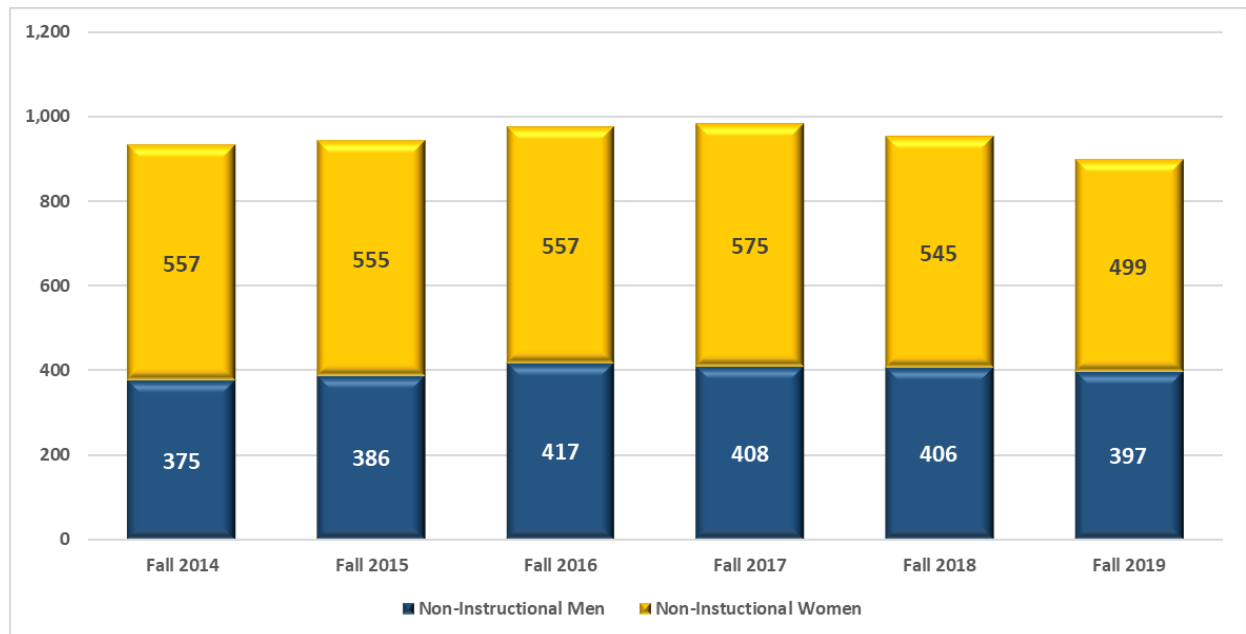
Graph 28: Non-Instructional Staff Counts by Gender

Table 36: Non-Instructional Staff Counts by Time Status and Minority Status

Non-Instructional Staff	Minority Status	Fall 2014	Fall 2015	Fall 2016	Fall 2017	Fall 2018	Fall 2019
Full time Staff	Minority Status	180 (21%)	181 (21%)	196 (21%)	199 (22%)	195 (22%)	198 (23%)
	Non-Minority Status	687 (79%)	701 (79%)	720 (79%)	721 (78%)	705 (78%)	654 (77%)
Part time Staff	Minority Status	8 (12%)	7 (12%)	7 (12%)	11 (17%)	12 (24%)	10 (23%)
	Non-Minority Status	57 (88%)	52 (88%)	51 (88%)	52 (83%)	39 (76%)	34 (77%)
Total Non-Instructional Staff	Minority Status	188 (20%)	188 (20%)	203 (21%)	210 (21%)	207 (22%)	208 (23%)
	Non-Minority Status	744 (80%)	753 (80%)	771 (79%)	773 (79%)	744 (78%)	688 (77%)

Source: All HR Data comes from Data Freezes on 11/01 of the year selected. The data is used for IPEDS reporting and the results are the same as seen in IPEDS HR reports.

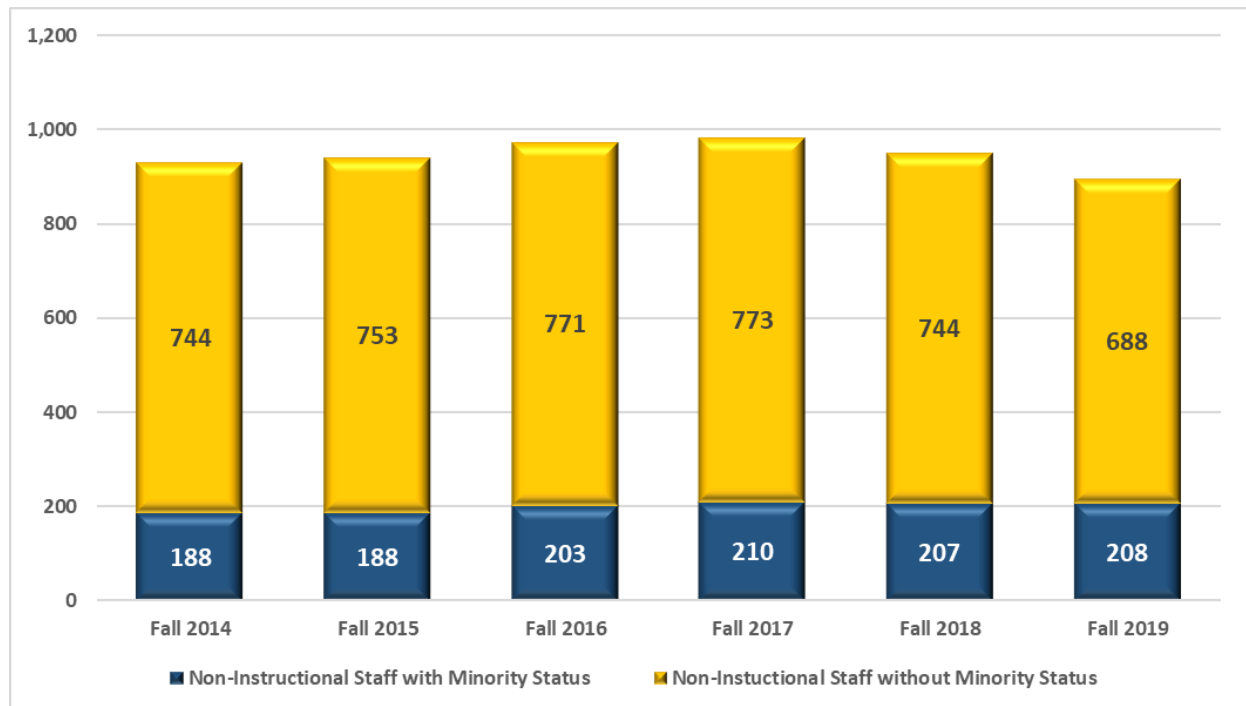
Graph 29: Non-Instructional Staff Counts by Minority Status

Table 37: Full Time Instructional Staff Counts by Rank and Gender

Full Time Faculty Rank	Gender	Fall 2014	Fall 2015	Fall 2016	Fall 2017	Fall 2018	Fall 2019
Full Professors	Men	106 (61%)	101 (62%)	104 (60%)	109 (60%)	117 (59%)	108 (57%)
	Women	67 (39%)	63 (38%)	69 (40%)	73 (40%)	81 (41%)	80 (43%)
Associate Professors	Men	67 (54%)	68 (50%)	64 (52%)	62 (50%)	57 (47%)	54 (49%)
	Women	56 (46%)	69 (50%)	60 (48%)	63 (50%)	64 (53%)	56 (51%)
Assistant Professors	Men	48 (40%)	46 (41%)	48 (37%)	51 (37%)	54 (39%)	50 (42%)
	Women	73 (60%)	65 (59%)	83 (63%)	88 (63%)	85 (61%)	70 (58%)
Instructors	Men	6 (35%)	5 (31%)	5 (28%)	7 (50%)	3 (33%)	3 (38%)
	Women	11 (65%)	11 (69%)	13 (72%)	7 (50%)	6 (67%)	5 (63%)
Lecturers	Men	19 (34%)	18 (32%)	11 (28%)	12 (24%)	12 (26%)	16 (29%)
	Women	37 (66%)	39 (68%)	28 (72%)	37 (76%)	35 (74%)	40 (71%)
Total	Men	246 (50%)	238 (49%)	232 (48%)	241 (47%)	243 (47%)	231 (48%)
	Women	244 (50%)	247 (51%)	253 (52%)	268 (53%)	271 (53%)	251 (52%)

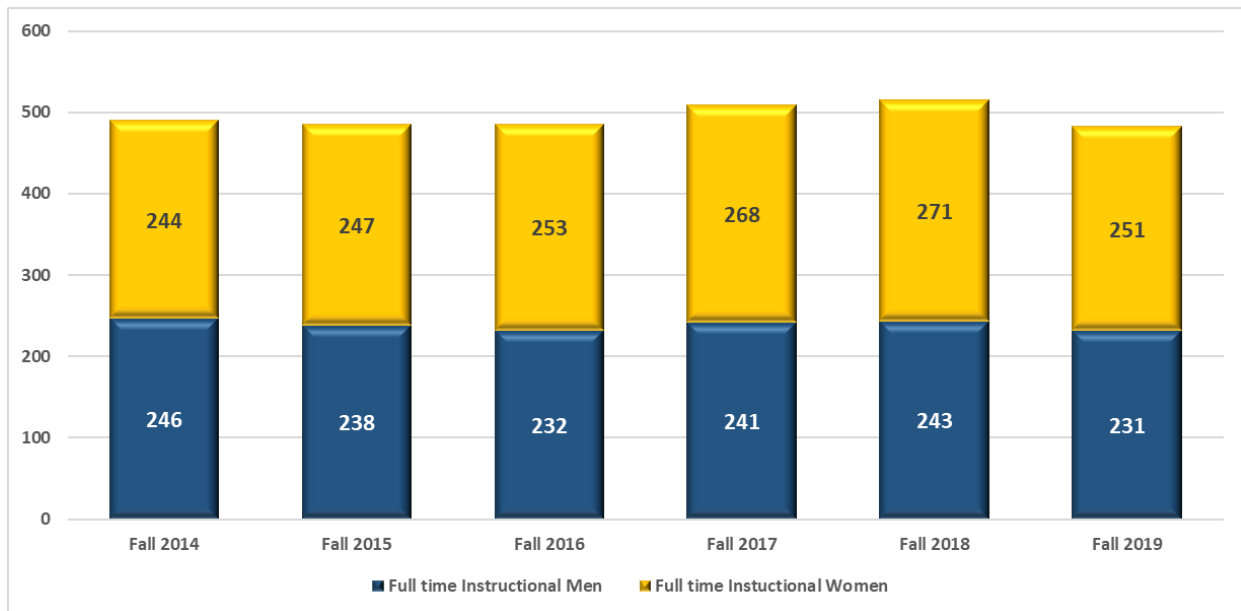
Source: All HR Data comes from Data Freezes on 11/01 of the year selected. The data is used for IPEDS reporting and the results are the same as seen in IPEDS HR reports.

Table 38: Full Time Instructional Staff Counts by Rank and Minority Status

Full Time Faculty Rank	Ethnicity	Fall 2014	Fall 2015	Fall 2016	Fall 2017	Fall 2018	Fall 2019
Full Professors	Minority Status	31 (18%)	30 (18%)	29 (17%)	32 (18%)	33 (17%)	28 (15%)
	Non-Minority Status	142 (82%)	134 (82%)	144 (83%)	150 (82%)	165 (83%)	160 (85%)
Associate Professors	Minority Status	11 (9%)	12 (9%)	10 (8%)	8 (6%)	9 (7%)	10 (9%)
	Non-Minority Status	112 (91%)	125 (91%)	114 (92%)	117 (94%)	112 (93%)	100 (91%)
Assistant Professors	Minority Status	10 (8%)	11 (10%)	15 (11%)	20 (14%)	19 (14%)	17 (14%)
	Non-Minority Status	111 (92%)	100 (90%)	116 (89%)	119 (86%)	120 (86%)	103 (86%)
Instructors	Minority Status	1 (6%)	1 (6%)	2 (11%)	1 (7%)	0 (<1%)	2 (25%)
	Non-Minority Status	16 (94%)	15 (94%)	16 (89%)	13 (93%)	9 (100%)	6 (75%)
Lecturers	Minority Status	6 (11%)	6 (11%)	5 (13%)	7 (14%)	7 (15%)	7 (13%)
	Non-Minority Status	50 (89%)	51 (89%)	34 (87%)	42 (86%)	40 (85%)	49 (88%)
Total	Minority Status	59 (12%)	60 (12%)	61 (13%)	68 (13%)	68 (13%)	64 (13%)
	Non-Minority Status	431 (88%)	425 (88%)	424 (87%)	441 (87%)	446 (87%)	418 (87%)

Source: All HR Data comes from Data Freezes on 11/01 of the year selected. The data is used for IPEDS reporting and the results are the same as seen in IPEDS HR reports.

Graph 30: Full Time Instructional Staff Counts by Gender



Graph 31: Full Time Instructional Staff Counts by Minority Status

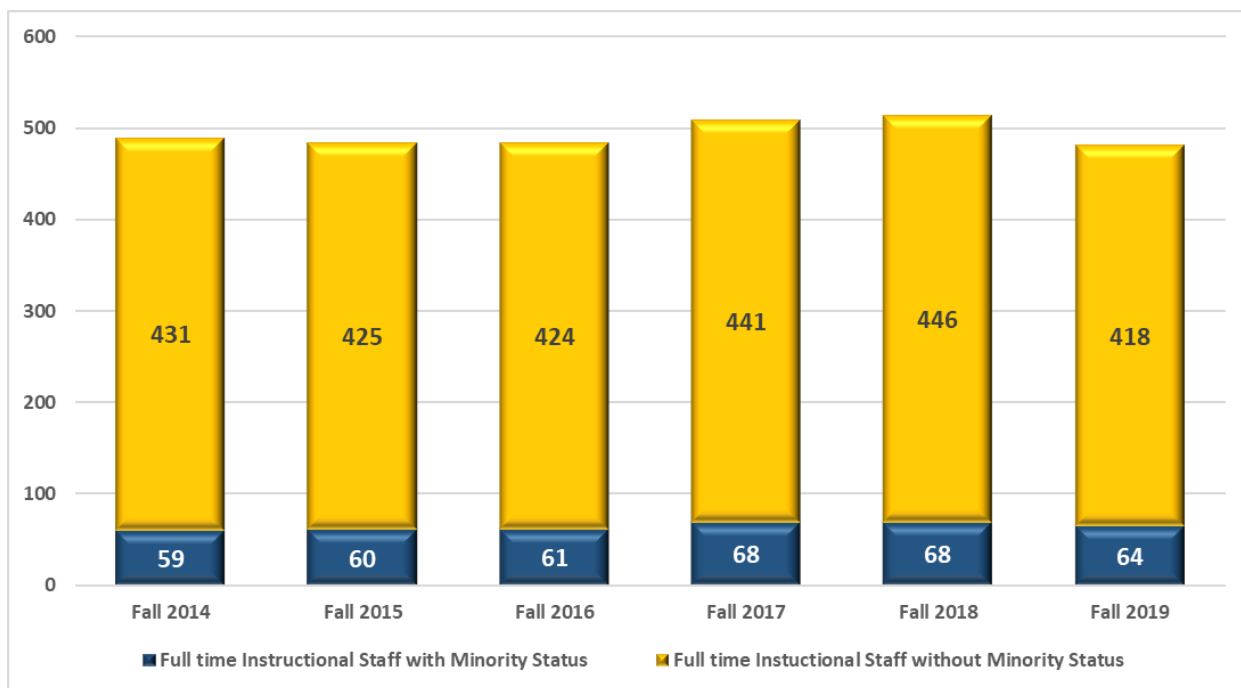


Table 39: Full Time Instructional Staff Counts by College

Full Time Faculty by College	Fall 2015	Fall 2016	Fall 2017	Fall 2018	Fall 2019
Total Full time Faculty	485	485	509	514	482
Education and Behavioral Sciences	98 (20%)	96 (20%)	110 (22%)	108 (21%)	99 (21%)
Humanities and Social Sciences	111 (23%)	116 (24%)	118 (23%)	121 (24%)	121 (25%)
Monfort College of Business	33 (7%)	34 (7%)	33 (6%)	34 (7%)	30 (6%)
Natural and Health Sciences	146 (30%)	151 (31%)	150 (29%)	156 (30%)	139 (29%)
Performing and Visual Arts	80 (16%)	71 (15%)	78 (15%)	77 (15%)	74 (15%)
Undergraduate Studies / University College	2 (<1%)	2 (<1%)	3 (<1%)	1 (<1%)	1 (<1%)
Library	15 (3%)	15 (3%)	17 (3%)	17 (3%)	18 (4%)

Source: All HR Data comes from Data Freezes on 11/01 of the year selected. The data is used for IPEDS reporting and the results are the same as seen in IPEDS HR reports.

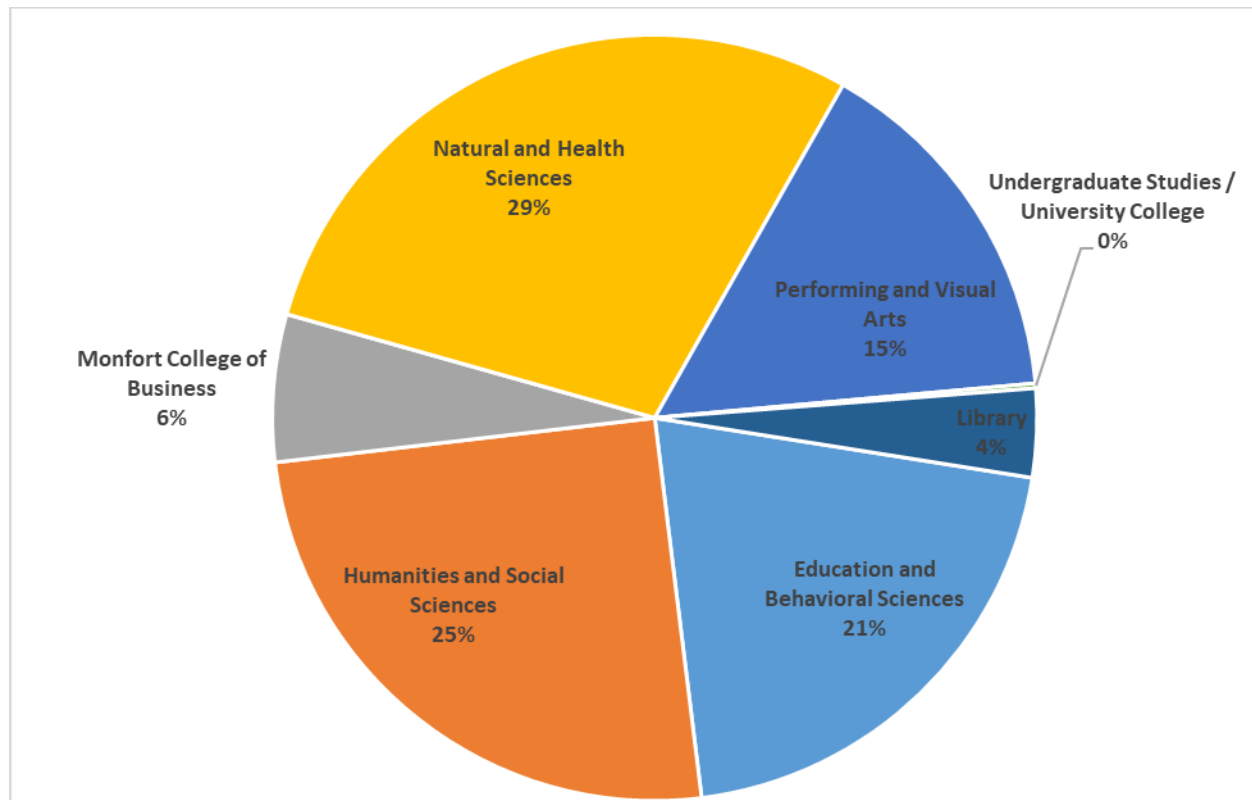
Graph 32: Fall 2019 Full Time Instructional Staff Percentages by College

Table 40: Full Time Instructional Staff Counts by College and Tenure

Full Time Faculty by College	Tenure	Fall 2015	Fall 2016	Fall 2017	Fall 2018	Fall 2019
Education and Behavioral Sciences	Tenure	65 (66%)	61 (64%)	61 (55%)	64 (59%)	59 (60%)
	Tenure Track	22 (22%)	24 (25%)	35 (32%)	25 (23%)	21 (21%)
	Not Tenure	11 (11%)	11 (11%)	14 (13%)	19 (18%)	19 (19%)
Humanities and Social Sciences	Tenure	64 (58%)	65 (56%)	62 (53%)	68 (56%)	68 (56%)
	Tenure Track	19 (17%)	23 (20%)	29 (25%)	25 (21%)	21 (17%)
	Not Tenure	28 (25%)	28 (24%)	27 (23%)	28 (23%)	32 (26%)
Monfort College of Business	Tenure	26 (79%)	26 (76%)	25 (76%)	25 (74%)	21 (70%)
	Tenure Track	4 (12%)	5 (15%)	4 (12%)	5 (15%)	7 (23%)
	Not Tenure	3 (9%)	3 (9%)	4 (12%)	4 (12%)	2 (7%)
Natural and Health Sciences	Tenure	67 (46%)	65 (43%)	59 (39%)	83 (53%)	76 (55%)
	Tenure Track	36 (25%)	45 (30%)	53 (35%)	36 (23%)	27 (19%)
	Not Tenure	43 (29%)	41 (27%)	38 (25%)	37 (24%)	36 (26%)
Performing and Visual Arts	Tenure	49 (61%)	48 (68%)	47 (60%)	53 (69%)	48 (65%)
	Tenure Track	17 (21%)	18 (25%)	22 (28%)	12 (16%)	8 (11%)
	Not Tenure	14 (18%)	5 (7%)	9 (12%)	12 (16%)	18 (24%)
Undergraduate Studies / University College	Tenure	1 (50%)	0 (<1%)	0 (<1%)	0 (<1%)	0 (<1%)
	Tenure Track	0 (<1%)	1 (50%)	2 (67%)	1 (100%)	1 (100%)
	Not Tenure	1 (50%)	1 (50%)	1 (33%)	0 (<1%)	0 (<1%)
Library	Tenure	9 (60%)	8 (53%)	8 (47%)	8 (47%)	9 (50%)
	Tenure Track	2 (13%)	3 (20%)	4 (24%)	5 (29%)	3 (17%)
	Not Tenure	4 (27%)	4 (27%)	5 (29%)	4 (24%)	6 (33%)
Total	Tenure	281 (58%)	273 (56%)	262 (51%)	301 (59%)	281 (58%)
	Tenure Track	100 (21%)	119 (25%)	149 (29%)	109 (21%)	88 (18%)
	Not Tenure	104 (21%)	93 (19%)	98 (19%)	104 (20%)	113 (23%)

Source: All HR Data comes from Data Freezes on 11/01 of the year selected. The data is used for IPEDS reporting and the results are the same as seen in IPEDS HR reports.

Table 41: Full Time Instructional Staff by College, Tenure, & Gender

Full Time Faculty by College	Tenure	Gender	Fall 2015	Fall 2016	Fall 2017	Fall 2018	Fall 2019
Education and Behavioral Sciences	Tenure	Male	30 (46%)	26 (43%)	25 (41%)	27 (42%)	23 (39%)
		Female	35 (54%)	35 (57%)	36 (59%)	37 (58%)	36 (61%)
	Tenure Track	Male	8 (36%)	7 (29%)	15 (43%)	11 (44%)	10 (48%)
		Female	14 (64%)	17 (71%)	20 (57%)	14 (56%)	11 (52%)
	Not Tenure	Male	2 (18%)	3 (27%)	1 (7%)	2 (11%)	2 (11%)
		Female	9 (82%)	8 (73%)	13 (93%)	17 (89%)	17 (89%)
Humanities and Social Sciences	Tenure	Male	37 (58%)	40 (62%)	39 (63%)	38 (56%)	39 (57%)
		Female	27 (42%)	25 (38%)	23 (37%)	30 (44%)	29 (43%)
	Tenure Track	Male	8 (42%)	8 (35%)	11 (38%)	13 (52%)	11 (52%)
		Female	11 (58%)	15 (65%)	18 (62%)	12 (48%)	10 (48%)
	Not Tenure	Male	6 (21%)	6 (21%)	6 (22%)	7 (25%)	11 (34%)
		Female	22 (79%)	22 (79%)	21 (78%)	21 (75%)	21 (66%)
Monfort College of Business	Tenure	Male	21 (81%)	19 (73%)	18 (72%)	19 (76%)	17 (81%)
		Female	5 (19%)	7 (27%)	7 (28%)	6 (24%)	4 (19%)
	Tenure Track	Male	4 (100%)	5 (100%)	3 (75%)	4 (80%)	6 (86%)
		Female	0 (<1%)	0 (<1%)	1 (25%)	1 (20%)	1 (14%)
	Not Tenure	Male	2 (67%)	2 (67%)	2 (50%)	2 (50%)	0 (<1%)
		Female	1 (33%)	1 (33%)	2 (50%)	2 (50%)	2 (100%)
Natural and Health Sciences	Tenure	Male	33 (49%)	35 (54%)	33 (56%)	43 (52%)	41 (54%)
		Female	34 (51%)	30 (46%)	26 (44%)	40 (48%)	35 (46%)
	Tenure Track	Male	13 (36%)	15 (33%)	19 (36%)	13 (36%)	10 (37%)
		Female	23 (64%)	30 (67%)	34 (64%)	23 (64%)	17 (63%)
	Not Tenure	Male	11 (26%)	11 (27%)	12 (32%)	10 (27%)	10 (28%)
		Female	32 (74%)	30 (73%)	26 (68%)	27 (73%)	26 (72%)

Source: All HR Data comes from Data Freezes on 11/01 of the year selected. The data is used for IPEDS reporting and the results are the same as seen in IPEDS HR reports.

Table 41: Full Time Instructional Staff by College, Tenure, & Gender (Continued)

Full Time Faculty by College	Tenure	Gender	Fall 2015	Fall 2016	Fall 2017	Fall 2018	Fall 2019
Performing and Visual Arts	Tenure	Male	37 (76%)	37 (77%)	36 (77%)	39 (74%)	34 (71%)
		Female	12 (24%)	11 (23%)	11 (23%)	14 (26%)	14 (29%)
	Tenure Track	Male	12 (71%)	12 (67%)	12 (55%)	8 (67%)	5 (63%)
		Female	5 (29%)	6 (33%)	10 (45%)	4 (33%)	3 (38%)
	Not Tenure	Male	8 (57%)	1 (20%)	3 (33%)	3 (25%)	8 (44%)
		Female	6 (43%)	4 (80%)	6 (67%)	9 (75%)	10 (56%)
Undergraduate Studies / University College	Tenure	Male	1 (100%)	0 N/A	0 N/A	0 N/A	0 N/A
		Female	0 (<1%)	0 N/A	0 N/A	0 N/A	0 N/A
	Tenure Track	Male	0 N/A	0 (<1%)	0 (<1%)	0 (<1%)	0 (<1%)
		Female	0 N/A	1 (100%)	2 (100%)	1 (100%)	1 (100%)
	Not Tenure	Male	1 (100%)	1 (100%)	1 (100%)	0 N/A	0 N/A
		Female	0 (<1%)	0 (<1%)	0 (<1%)	0 N/A	0 N/A
Library	Tenure	Male	3 (33%)	3 (38%)	3 (38%)	2 (25%)	1 (11%)
		Female	6 (67%)	5 (63%)	5 (63%)	6 (75%)	8 (89%)
	Tenure Track	Male	0 (<1%)	0 (<1%)	1 (25%)	1 (20%)	1 (33%)
		Female	2 (100%)	3 (100%)	3 (75%)	4 (80%)	2 (67%)
	Not Tenure	Male	1 (25%)	1 (25%)	1 (20%)	1 (25%)	2 (33%)
		Female	3 (75%)	3 (75%)	4 (80%)	3 (75%)	4 (67%)
Total	Tenure	Male	162 (58%)	160 (59%)	154 (59%)	168 (56%)	155 (55%)
		Female	119 (42%)	113 (41%)	108 (41%)	133 (44%)	126 (45%)
	Tenure Track	Male	45 (45%)	47 (39%)	61 (41%)	50 (46%)	43 (49%)
		Female	55 (55%)	72 (61%)	88 (59%)	59 (54%)	45 (51%)
	Not Tenure	Male	31 (30%)	25 (27%)	26 (27%)	25 (24%)	33 (29%)
		Female	73 (70%)	68 (73%)	72 (73%)	79 (76%)	80 (71%)

Source: All HR Data comes from Data Freezes on 11/01 of the year selected. The data is used for IPEDS reporting and the results are the same as seen in IPEDS HR reports.

Table 42: Full Time Instructional Staff by College, Tenure, & Minority Status

Full Time Faculty by College	Tenure	Ethnicity	Fall 2015	Fall 2016	Fall 2017	Fall 2018	Fall 2019
Education and Behavioral Sciences	Tenure	Minority Status	10 (15%)	9 (15%)	10 (16%)	12 (19%)	11 (19%)
		Non-Minority Status	55 (85%)	52 (85%)	51 (84%)	52 (81%)	48 (81%)
	Tenure Track	Minority Status	3 (14%)	5 (21%)	8 (23%)	5 (20%)	5 (24%)
		Non-Minority Status	19 (86%)	19 (79%)	27 (77%)	20 (80%)	16 (76%)
	Not Tenure	Minority Status	2 (18%)	2 (18%)	2 (14%)	3 (16%)	3 (16%)
		Non-Minority Status	9 (82%)	9 (82%)	12 (86%)	16 (84%)	16 (84%)
Humanities and Social Sciences	Tenure	Minority Status	11 (17%)	9 (14%)	9 (15%)	9 (13%)	9 (13%)
		Non-Minority Status	53 (83%)	56 (86%)	53 (85%)	59 (87%)	59 (87%)
	Tenure Track	Minority Status	2 (11%)	3 (13%)	5 (17%)	6 (24%)	6 (29%)
		Non-Minority Status	17 (89%)	20 (87%)	24 (83%)	19 (76%)	15 (71%)
	Not Tenure	Minority Status	4 (14%)	5 (18%)	3 (11%)	5 (18%)	5 (16%)
		Non-Minority Status	24 (86%)	23 (82%)	24 (89%)	23 (82%)	27 (84%)
Monfort College of Business	Tenure	Minority Status	6 (23%)	6 (23%)	6 (24%)	6 (24%)	5 (24%)
		Non-Minority Status	20 (77%)	20 (77%)	19 (76%)	19 (76%)	16 (76%)
	Tenure Track	Minority Status	1 (25%)	1 (20%)	0 (<1%)	0 (<1%)	0 (<1%)
		Non-Minority Status	3 (75%)	4 (80%)	4 (100%)	5 (100%)	7 (100%)
	Not Tenure	Minority Status	1 (33%)	1 (33%)	1 (25%)	1 (25%)	0 (<1%)
		Non-Minority Status	2 (67%)	2 (67%)	3 (75%)	3 (75%)	2 (100%)
Natural and Health Sciences	Tenure	Minority Status	7 (10%)	7 (11%)	8 (14%)	8 (10%)	7 (9%)
		Non-Minority Status	60 (90%)	58 (89%)	51 (86%)	75 (90%)	69 (91%)
	Tenure Track	Minority Status	3 (8%)	4 (9%)	3 (6%)	5 (14%)	4 (15%)
		Non-Minority Status	33 (92%)	41 (91%)	50 (94%)	31 (86%)	23 (85%)
	Not Tenure	Minority Status	3 (7%)	3 (7%)	3 (8%)	1 (3%)	1 (3%)
		Non-Minority Status	40 (93%)	38 (93%)	35 (92%)	36 (97%)	35 (97%)

Source: All HR Data comes from Data Freezes on 11/01 of the year selected. The data is used for IPEDS reporting and the results are the same as seen in IPEDS HR reports.

Table 42: Full Time Instructional Staff by College, Tenure, & Minority Status (Continued)

Full Time Faculty by College	Tenure	Ethnicity	Fall 2015	Fall 2016	Fall 2017	Fall 2018	Fall 2019
Performing and Visual Arts	Tenure	Minority Status	6 (12%)	6 (13%)	6 (13%)	5 (9%)	3 (6%)
		Non-Minority Status	43 (88%)	42 (88%)	41 (87%)	48 (91%)	45 (94%)
	Tenure Track	Minority Status	0 (<1%)	0 (<1%)	2 (9%)	2 (17%)	1 (13%)
		Non-Minority Status	17 (100%)	18 (100%)	20 (91%)	10 (83%)	7 (88%)
	Not Tenure	Minority Status	0 (<1%)	0 (<1%)	1 (11%)	0 (<1%)	3 (17%)
		Non-Minority Status	14 (100%)	5 (100%)	8 (89%)	12 (100%)	15 (83%)
Undergraduate Studies / University College	Tenure	Minority Status	0 (<1%)	0 N/A	0 N/A	0 N/A	0 N/A
		Non-Minority Status	1 (100%)	0 N/A	0 N/A	0 N/A	0 N/A
	Tenure Track	Minority Status	0 N/A	0 (<1%)	1 (50%)	0 (<1%)	0 (<1%)
		Non-Minority Status	0 N/A	1 (100%)	1 (50%)	1 (100%)	1 (100%)
	Not Tenure	Minority Status	0 (<1%)	0 (<1%)	0 (<1%)	0 N/A	0 N/A
		Non-Minority Status	1 (100%)	1 (100%)	1 (100%)	0 N/A	0 N/A
Library	Tenure	Minority Status	0 (<1%)	0 (<1%)	0 (<1%)	0 (<1%)	0 (<1%)
		Non-Minority Status	9 (100%)	8 (100%)	8 (100%)	8 (100%)	9 (100%)
	Tenure Track	Minority Status	0 (<1%)	0 (<1%)	0 (<1%)	0 (<1%)	0 (<1%)
		Non-Minority Status	2 (100%)	3 (100%)	4 (100%)	5 (100%)	3 (100%)
	Not Tenure	Minority Status	1 (25%)	0 (<1%)	0 (<1%)	0 (<1%)	1 (17%)
		Non-Minority Status	3 (75%)	4 (100%)	5 (100%)	4 (100%)	5 (83%)
Total	Tenure	Minority Status	40 (14%)	37 (14%)	39 (15%)	40 (13%)	35 (12%)
		Non-Minority Status	241 (86%)	236 (86%)	223 (85%)	261 (87%)	246 (88%)
	Tenure Track	Minority Status	9 (9%)	13 (11%)	19 (13%)	18 (17%)	16 (18%)
		Non-Minority Status	91 (91%)	106 (89%)	130 (87%)	91 (83%)	72 (82%)
	Not Tenure	Minority Status	11 (11%)	11 (12%)	10 (10%)	10 (10%)	13 (12%)
		Non-Minority Status	93 (89%)	82 (88%)	88 (90%)	94 (90%)	100 (88%)

Source: All HR Data comes from Data Freezes on 11/01 of the year selected. The data is used for IPEDS reporting and the results are the same as seen in IPEDS HR reports.