

UNIVERSITY OF NORTHERN COLORADO

---

# Annual Alcohol & Drug Notice

2024 - 2025



UNIVERSITY OF  
NORTHERN COLORADO

---



# Summary

## How to Get Help: Alcohol and Other Drug Support

UNC encourages any community member who is concerned that they might have a problem with alcohol or drug use to turn to the resources below for consultation. Consultations are also available through these resources when a community member needs to discuss the alcohol or substance use of another community member.

### Campus Support

#### Confidential Resources

UNC Counseling Center	970-351-2496
Student Health Center	970-351-2412
Afer Hour Crisis Support	970-351-2496
Employee Assistance Program	970-351-2496

#### Non-Confidential Resources

Office of Health Promotion	970-351-1136
UNC Police Department	970-351-2245
CARE Team	970-351-2001
Student Outreach & Support	970-351-2796
Student Conduct & Accountability	970-351-2001

### Off-Campus Support

North Range Behavioral Health	970-347-2120
Suicide & Crisis Lifeline	988 (text/call)
Alcohol Drug Help Line	800-923-4357
NOCO Area Intergroup (AA)	<a href="#">Website</a>
Cocaine Anonymous Colorado	<a href="#">Website</a>
Narcotics Anonymous	<a href="#">Website</a>



**Need Help Now?**

[coloradocrisiservices.org](http://coloradocrisiservices.org)

**1-844-493-TALK (8255)**

Available 24/7, 365 days a year

## Quick Links: Support Resources



[Counseling Center](#)



[EAP Program](#)



[Student Resources](#)



[Overdose Prevention](#)

This report is intended to provide the UNC community with awareness of the policies and programs available on UNC's campus and within the broader Greeley community. UNC employees are encouraged to seek support through the EAP program, which provides employees with 10 free counseling sessions each fiscal year (July 1st through June 30th). Students who are seeking to explore alcohol and other drug support services are encouraged to reach out to any of the resources listed above.

## Table of Contents

UNC Alcohol and Drug Policy.....	01	Applicable Federal Sanctions .....	08
Colorado Legal Sanctions Related to Substance Use.....	03	Marijuana Federal Sanctions.....	09
Drug Classifications.....	04	UNC Policy Violations.....	10
Colorado Legal Sanctions: Controlled Substances.....	05	Health Effects of Substance Use.....	11
Colorado Legal Sanctions: Alcohol.....	06	How to Get Help.....	13
Colorado Legal Sanctions: Marijuana.....	07	Alcohol and Other Drug Support Resources.....	14



**UNC**

Health Promotion

Questions about this report?  
Contact: [Shawn.Walcott@unco.edu](mailto:Shawn.Walcott@unco.edu)

---

# Introduction

The University of Northern Colorado (UNC) strives to provide the campus community with tools and resources to promote the health and well-being of students, faculty and staff.

As a recipient of both state and federal funding, UNC is obligated to abide by both state and federal laws related to the use of alcohol, marijuana and other drugs. The information below provides community members with the latest information related to:

- Institutional policies regarding alcohol and drug use
- Laws and potential legal consequences of substance use
- Health effects of substance use
- Resources for those who need support with alcohol or other drug use

## UNC Drug and Alcohol Policy



**University Regulations 3-11-101 The Drug and Alcohol Policy.** The University of Northern Colorado strives to create a healthy environment, one in which the high-risk use of alcohol and the use of illicit drugs does not interfere with learning, performance or development. Substance abuse disrupts this environment and places at risk the lives and well-being of the members of the university community, as well as the potential of students to contribute to society. It is important for all members of the university community to take responsibility for preventing the illegal or high-risk use of alcohol or other drugs from negatively affecting the community's learning environment and the academic, physical and emotional well-being of its students.

**University Regulations 3-11-102 University Policy Statement.** The University of Northern Colorado prohibits the unlawful possession, use or distribution of drugs, alcohol and other controlled substances by all members of the university community (students, faculty, staff, alumni and guests). Individuals who violate this policy shall be subject to discipline, termination, dismissal, debarment, arrest or citation as applicable. Additionally, employees or students who violate this policy may be required to participate satisfactorily in drug abuse education, counseling or rehabilitation programs approved by the university.

**University Regulations 3-11-103 Policy on Alcohol.** The University of Northern Colorado neither encourages nor discourages the use of alcoholic beverages (includes 3.2 and 6% beer, vinous or spirituous liquor), but does condemn the misuse/abuse and illegal use of alcoholic beverages. All members of the university community (students, faculty, staff, alumni and guests) are responsible for making decisions about their behavior within the context of Colorado and the City of Greeley laws and university regulations, and in the case of travel, within the requirements of the State of Colorado Fiscal Rule 5-1.02. In addition, individuals must always be aware of and respect the rights of others within the university and local community.

- No person under legal drinking age in Colorado may have in their possession or consume malt, vinous or spirituous liquor on the University of Northern Colorado campus and/or properties owned by the university or as part of any of its activities.



- 
- Persons of legal age who adhere to the following responsible drinking guidelines may consume alcoholic beverages on campus:
    - Individuals who possess or consume alcoholic (or non-alcoholic) beverages will not litter university grounds;
    - Individuals who possess, are consuming or are under the influence of alcoholic beverages will not engage in abusive language or behavior or infringe upon the rights of any person;
    - Individuals who possess, are consuming or are under the influence of alcoholic beverages will not abuse university or local property.
  - Individuals may not possess or consume alcohol in classrooms and academic or administrative buildings unless prior approval is obtained from the Vice President for Academic Affairs or their designee. Alcohol may not be purchased with State of Colorado or non-state university funds.
  - When a group schedules use of university property for an organized function, it will be required to designate if alcohol will be consumed. If alcohol is being consumed at an organized function, the group shall adhere to the UNC Alcohol Policy and the State of Colorado and City of Greeley laws and regulations. Campus areas are available for scheduling functions at which alcoholic beverages will be served or consumed. However, permission for scheduling university facilities for organized events will be determined through the Office of Conference, Catering and Event Scheduling Services. The sponsoring group shall be responsible for assuring no one under legal age is allowed to consume or possess alcoholic beverages.
  - As a matter of university policy, the sponsoring group is encouraged to make reasonable efforts to persuade persons attending its function to not drive a motor vehicle away from the function when that person is apparently impaired or intoxicated and provide alternative transportation.
  - **Advertisement of Events.** The University of Northern Colorado encourages the celebration of events. These celebrations are usually accompanied by food and drink, which may include alcoholic beverages. The advertisement of such events on campus by sponsors shall not promote the misuse/abuse of alcoholic beverages. Publicity shall focus on the event and not emphasize the consumption of alcoholic beverages. Mention of alternative beverages and food must be included if alcohol is mentioned in the advertisement. Advertisements must include the statement: "The University of Northern Colorado prohibits the irresponsible and illegal consumption of alcoholic beverages."
  - **Admissions Charge for Functions Held by Non-Profit Organizations.** Groups or organizations that are incorporated for non-profit reasons may charge admission to members and their guests attending a social function, and alcoholic beverages may be served by the drink, at no charge per drink. When such an event is scheduled on university facilities, a security plan approved by the University Police Department must be submitted to the Office of Conference, Catering and Event Scheduling Services before the event is scheduled. When a special permit is necessary to sell alcoholic beverages, it must be obtained from the city or state agency after the event is scheduled. In addition, when an event is scheduled on University facilities, a security plan approved by the University Police Department must be submitted to the Office of Conference, Catering, and Event Scheduling Services before the event is scheduled. As long as alcoholic beverages are served during an event, food and a variety of popular non-alcoholic beverages must be served. If alcohol is served by the drink, the price of the non-alcoholic beverage may not exceed the price charged for the alcoholic beverage. It is encouraged that non-alcoholic beverages be served free of charge and provided to persons who are designated drivers or who desire to abstain from alcoholic beverages.
  - Open alcohol containers are prohibited on the UNC campus, except at designated areas or scheduled events at which alcohol is authorized to be sold, served or consumed. These events shall be scheduled through the University Conference and Scheduling office.



- Glass containers may not be present in areas adjacent to the residence halls, parks, athletic fields or practice fields.
- Individuals are required to be in compliance with additional alcohol policies in effect in other areas of the campus, which may be more restrictive than this policy. Other policies include, but may not be limited to, the residence halls, intramural and athletic programs, and the University Center. These policies and procedures can be found in:



Residence Hall  
Handbook



Intramural  
Handbook



Policy & Procedure  
Handbook



Student Code of  
Conduct

**3-11-104 Policy on Drugs.** The university prohibits the unlawful or unauthorized manufacture, distribution, dispensing, possession, consumption, sale or use of controlled substances on or in university-owned or controlled property, or in the course of university business or at university activities. Individuals or entities including, but not limited to, students, employees, contractors, agents, volunteers, invitees, or student organizations who violate this policy may be required to participate satisfactorily in a drug abuse assistance or rehabilitation program approved by the university.

The Student Conduct and Accountability website contains additional information about the alcohol policy and the drug policy for students. That information should also be read in conjunction with the above policy.

## Colorado Legal Sanctions Related to Substance Use

### Overview: Applicable Colorado Sanctions

The information in the following chart is provided by the United States Drug Enforcement Administration.

Drug/Schedule	Quantity	Penalties	Quantity	Penalties
Cocaine (Schedule II)	500-4999 grams mixture	<b>First offense:</b> Not less than 5 years, and not more than 40 years. If death or serious injury, not less than 20 years or more than life. Fine of not more than \$5 million if an individual, \$25 million if not an individual.	5 kgs or more mixture	<b>First offense:</b> Not less than 10 years, and not more than life. If death or serious injury, not less than 20 years or more than life. Fine of not more than \$10 million if an individual, \$50 million if not an individual.
Cocaine Base (Schedule II)	28-279 grams mixture		280 grams or more mixture	
Fentanyl (Schedule I)	40-399 grams mixture		400 grams mixture or more	
Fentanyl Analogue (Schedule I)	10-99 grams mixture		100 grams or more mixture	
Heroin (Schedule I)	100-999 grams mixture	<b>Second offense:</b> Not less than 10 years, and not more than life. If death or serious injury, life imprisonment. Fine of not more than \$8 million if an individual, \$50 million if not an individual.	1 kg or more mixture	<b>Second offense:</b> Not less than 20 years, and not more than life. If death or serious injury, life imprisonment. Fine of not more than \$20 million if an individual, \$75 million if not an individual.
LSD (Schedule I)	1-9 grams mixture		10 grams or more mixture	
Methamphetamine (Schedule II)	5-49 Grams pure or 50-499 grams mixture		50 grams or more pure or 500 grams or more mixture	
PCP (Schedule II)	10-99 grams pure or 100-999 grams mixture		100 gm or more pure or 1 kg or more mixture	
				<b>Two or more prior offenses:</b> Life imprisonment. Fine of not more than \$20 million if an individual, \$75 million if not an individual.

Drug/Schedule	Quantity	Penalties
Other schedule I & II drugs (and any drug product containing Gamma Hydroxybutyric Acid)	Any Amount	<b>First Offense:</b> Not more than 20 years. If death or serious injury, not less than 20 years, or more than life. Fine not more than \$1 million if an individual, \$5 million if not an individual. <b>Second Offense:</b> Not more than 30 years. If death or serious bodily injury, life imprisonment. Fine not more than \$2 million if an individual, \$10 million if not an individual.
Flunitrazepam (Schedule IV)	1 gram	
Other Schedule III drugs	Any amount	<b>First Offense:</b> Not more than 10 years. If death or serious injury, not more than 15 years. Fine not more than \$500,000 if an individual, \$2.5 million if not an individual. <b>Second Offense:</b> Not more than 20 years. If death or serious injury, not more than 30 years. Fine not more than \$1 million if an individual, \$5 million if not an individual.
All other schedule IV drugs	Any amount	<b>First offense:</b> Not more than 5 years. Fine not more than \$250,000 if an individual, \$1 million if not an individual. <b>Second Offense:</b> Not more than 10 years. Fine not more than \$500,000 if an individual, \$2 million if other than an individual.
Flunitrazepam (Schedule IV)	Other than 1 gram or more	
All Schedule V drugs	Any amount	<b>First Offense:</b> Not more than 1 year. Fine not more than \$100,000 if an individual, \$250,000 if not an individual. <b>Second Offense:</b> Not more than 4 years. Fine not more than \$200,000 if an individual, \$500,000 if not an individual.

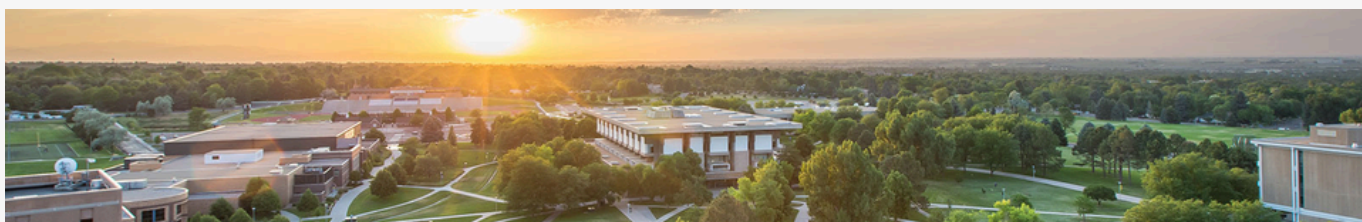
**\*The minimum sentence for a violation after two or more prior convictions for a felony drug offense is a mandatory term of life imprisonment without release and a fine up to \$20 million if an individual and \$75 million if other than an individual.**

## Other Drugs

### Drug Classification:

### Examples:

Schedule I	Fentanyl, heroin, LSD, PCP, psilocybin, mescaline and peyote
Schedule II	Opium, prescription opioid pain pills (e.g. oxycodone, hydrocodone, morphine, and methadone), stimulants (e.g. cocaine, methamphetamines)
Schedule III	Barbiturates, ketamine, anabolic steroids and medications including small amounts of codeine
Schedule IV	Diazepam (valium) and non-barbiturate sleep medications such as zolpidem (Ambien)
Schedule V	Over-the-counter cough syrups and cold medications containing small amounts of codeine





# Colorado Legal Sanctions: Controlled Substances

Possession	Type of Offense	Jail Term/Penalties	Fine	Driver's License
>4gm of Schedule I and II, Any amount of flunitrazepam, ketamine, and gamma hydroxybutyrate	Level 4 drug felony	6 months – 1 year; 1 year parole period	\$1,000 - \$100,000	N/A
<4gm of Schedule I and II, Any amount of Schedule III, IV, and V	Offense 1-3; Level 1 drug misdemeanor. Offense 4+; Level 4 drug felony	1-3 offenses; less than 364 days, 4+ offenses; 6 months-1 year; 1 year parole period	1-3 offenses; less than \$1,000, 4+ offenses; \$1,000-\$100,000	N/A
Any material containing fentanyl <1gm	Offense 1-3; Level 1 drug misdemeanor. Offense 4+; Level 4 drug felony	1-3 offenses; less than 364 days, 4+ offenses; 6 months-1 year; 1 year parole period	1-3 offenses; less than \$1,000, 4+ offenses; \$1,000-\$100,000	N/A
Any material containing fentanyl >1gm	Level 4 drug felony	6 months-1 year; 1 year parole period	\$1,000-\$100,000	N/A
Any material that contains more than 60% fentanyl	Level 2 drug felony	4 years – 8 years	\$3,000 - \$750,000	N/A

## Use of Controlled Substances

All controlled substances except marijuana products	Level 2 drug misdemeanor	Less than 120 days	Less than \$750	N/A
--	--------------------------	--------------------	-----------------	-----

**\*Note: All controlled substance charges also include drug offender surcharge in addition to the fines listed.**

## Natural Medicine Regulation And Legalization Act (SB23-290)

Note: In 2023, Colorado passed SB23-290, the Natural Medicine Regulation And Legalization Act. This law decriminalizes certain natural medicines. Use and possession of these drugs cannot be grounds for criminal charges without evidence of other unlawful acts. The drugs include: Psilocybin, Psilocin, Dimethyltryptamine (DMT), and Ibogaine. The Colorado legislature created this law in concert with the state's Native American and Indigenous people to increase recognition of the use of natural medicine.



[SB23-290](#)

# Colorado Legal Sanctions: Alcohol

Alcohol sanctions reaching petty and misdemeanor charges include having one's driver's license revoked, community service or probation and fines up to \$1,500. Sanctioning for scheduled drugs such as cocaine, heroin, morphine and other narcotics include felony and misdemeanor charges, which equate to 6-month to 32-year jail terms or parole sentences and fines from \$1,000 to \$1 million depending on aggravating factors. Sanctions for marijuana public consumption, possession and distribution, including felony and misdemeanor charges, can equate to community service, parole or jail sentences ranging from 6 months to 32 years depending on offense. Fines from \$50 to \$1 million have been given depending on the offense and aggravating factors.

Offense	Type of Offense	Jail Term/Penalties	Fine	Driver's License
Alcohol consumption/possession: illegal under 21	Unclassified petty offense	24-36 hours community service; substance abuse education program	\$100-\$250	Revoked
Juvenile DUI: Under 21 blood alcohol level (BAC) between .03 and .05 Zero tolerance law	Class A traffic infraction	24 hours community service	\$15-\$100	Revoked
Driving while impaired (DWA) BAC .05 to .08	Traffic misdemeanor	<b>1st Offense:</b> 2-180 days jail; 24-48 hours community service  <b>2nd Offense:</b> 10-365 days; 48-120 hours community service; 2 years' probation  <b>3rd Offense or more:</b> 60-365 days; 48-120 hours community service; 2 years' probation; alcohol education program	1st offense: \$200 - \$500  2nd Offense: \$600 - \$1,500  3rd offense+: \$600 - \$1,500	Revoked if under 21
Driving under the influence of ethyl alcohol BAC above 0.08	Traffic misdemeanor	<b>1st Offense:</b> 5-365 days (if BAC >0.2, then 10-365 days); 48-96 hours community service  <b>2nd Offense:</b> 10-365 days; 48-120 hours community service  <b>3rd Offense or more:</b> 60-365 days; 48-120 hours community service; alcohol education program; 2 years' probation	1st offense: \$600-\$1,000  2nd Offense: \$600-\$1,500  3rd Offense +: \$600-1,500	Revoked
Open alcohol container	Class A traffic infraction	None	\$50	None





# Colorado Legal Sanctions: Marijuana

Offense	Type of Offense	Jail Term/Penalties	Fine	Driver's License
<b>Providing Marijuana to a Minor</b>				
>2.5lbs (>1lb concentrate)	Level 1 drug felony	8-32 years, 3 years parole	\$5,000-\$1M	N/A
>6oz – 2.5lbs (3oz-1lb concentrate)	Level 2 drug felony	4-8 years, 2 years parole	\$3,000-\$750,000	N/A
>1oz-6oz (.5oz-3oz concentrate)	Level 3 drug felony	2-4 years, 1 year parole	\$2,000-\$500,000	N/A
<1oz (<.5oz concentrate)	Level 4 drug felony	6 months – 1 year, 1 year parole	\$1,000 - \$100,000	N/A
<b>Manufacture or process without a license</b>				
Any amount of marijuana or concentrate	Level 3 drug felony	2-4 years, 1 year parole	\$2,000-\$500,000	N/A
<b>Dispense, sell, distribute or possess with intent to manufacture, dispense, sell or distribute</b>				
50lbs (>25lbs concentrate)	Level 1 drug felony	8-32 years, 3 years parole	\$5,000 - \$1M	N/A
>5lbs – 50lbs (>2.5lbs - 25lbs concentrate)	Level 2 drug felony	4-8 years, 2 years parole	\$3,000 - \$750,000	N/A
>12oz – 5lbs (>6oz-2.5lbs concentrate)	Level 3 drug felony	2-4 years, 1 year parole	\$2,000-\$500,000	N/A
>4oz-12oz (>2oz-6oz concentrate)	Level 4 drug felony	6 months – 1 year, 1 year parole	\$1,000 - \$100,000	N/A
<4oz (<2oz concentrate)	Level 1 drug misdemeanor	6-18 months	\$500 - \$5,000	N/A
<b>Possession of Plants</b>				
>30 plants	Level 3 drug felony	2-4 years, 1 year parole	\$2,000 - \$500,000	N/A
>6-30 plants	Level 4 drug felony	6 months – 1 year, 1 year parole	\$1,000 - \$100,000	N/A
< 6 plants	Level 1 drug misdemeanor	6-18 months	\$500 - \$5,000	N/A
<b>Possession</b>				
>12oz (3oz concentrate)	Level 4 drug felony	6 months – 1 year, 1 year parole	\$1,000 - \$100,000	N/A
>6oz-12oz	Level 1 drug misdemeanor	6-18 months	\$500 - \$5,000	N/A
>2oz-6oz	Level 2 drug misdemeanor	0-12 months	\$50 - \$750	N/A
<2oz	Drug petty offense	Up to 24 hours community service	\$100	N/A

# Applicable Federal Sanctions

The following information is informed by the Drug Enforcement Agency.

## CONTROLLED SUBSTANCE: FEDERAL SANCTIONS

Drug/Schedule	Quantity	Penalties	Quantity	Penalties
Cocaine (schedule II)	500-4,999 grams mixture	<b>First offense:</b> Not less than 5 years, and not more than 40 years. If death or serious injury, not less than 20 or more than life. Fine of not more than \$5 million if an individual, \$25 million if not an individual.  <b>Second offense:</b> Not less than 10 years, and not more than life. If death or serious injury, life imprisonment. Fine of not more than \$8 million if an individual, \$50 million if not an individual.	5 kgs or more mixture	<b>First offense:</b> Not less than 10 years, and not more than life. If death or serious injury, not less than 20 or more than life. Fine of not more than \$10 million if an individual, \$50 million if not an individual.
Cocaine Base (schedule II)	28-279 grams mixture		280 grams or more mixture	
Fentanyl (schedule II)	40-399 grams mixture		400 grams or more mixture	<b>Second offense:</b> Not less than 20 years, and not more than life. If death or serious injury, life imprisonment. Fine of not more than \$20 million of an individual, \$75 million if not an individual.  <b>Two or more prior offenses:</b> Life imprisonment. Fine of not more than \$20 million if an individual, \$75 million if not an individual.
Fentanyl Analogue (schedule I)	10-99 grams mixture		100 grams or more mixture	
Heroin (schedule I)	100-999 grams mixture		1 kg or more mixture	
LSD (schedule I)	1-9 grams mixture		10 grams or more mixture	
Methamphetamine (schedule II)	5-9 grams pure or 50-499 grams mixture		50 grams or more pure or 500 grams or more mixture	
PCP (schedule I)	10-99 grams pure or 100-999 grams mixture		100 grams or more pure or 1 kg or more mixture	

## PENALTIES

Other schedule I & II drugs (and any drug product containing Gamma Hydroxybutyric Acid)	Any amount	<b>First offense:</b> No more than 20 years. If death or serious injury, not less than 20 years, or more than life. Fine \$1 million if an individual, \$5 million if not an individual.  <b>Second offense:</b> Not more than 30 years. If death or serious bodily injury, life imprisonment. Fine \$2 million if an individual, \$10 million if not an individual.
Flunitrazepam (schedule IV)	1 gram	
Other Schedule III drugs	Any amount	<b>First offense:</b> No more than 10 years. If death or serious injury, not more than 15 years. Fine not more than \$500,000 if an individual, \$2.5 million if not an individual.
All other schedule IV drugs		<b>Second offense:</b> Not more than 20 years. If death or serious bodily injury, not more than 30 years. Fine not more than \$1 million if an individual, \$5 million if not an individual.
Flunitrazepam (schedule IV)	1 gram or more	<b>First offense:</b> Not more than 5 years. Fine not more than \$250,000 if an individual, \$1 million if not an individual.
All Schedule V drugs	Any amount	<b>Second offense:</b> Not more than 10 years. Fine not more than \$500,000 if an individual, \$2 million if not an individual.

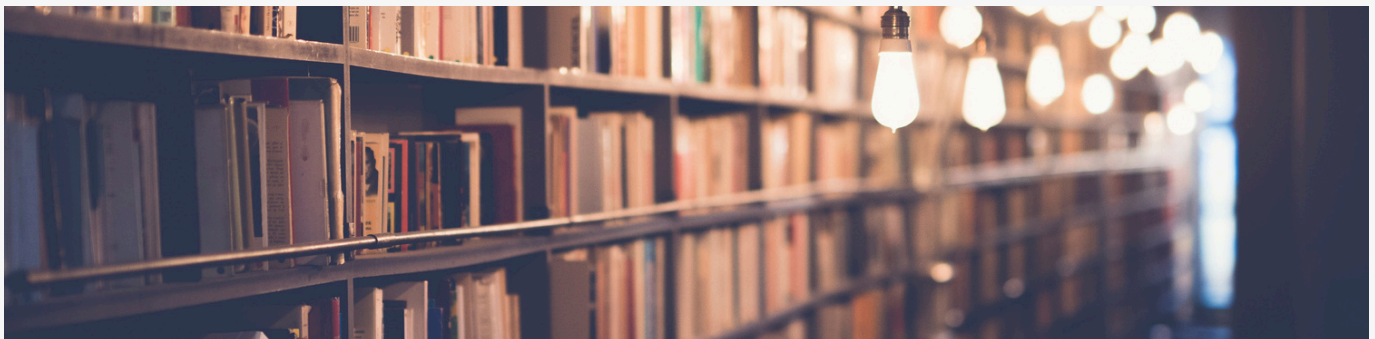


# Marijuana Federal Sanctions

## CONTROLLED SUBSTANCE: FEDERAL SANCTIONS

Drug	Quantity	First Offense	Second Offense
Marijuana (schedule I)	1,000 kg or more marijuana mixture; or 1,000 or more marijuana plants	Not less than 10 years or more than life. If death or serious bodily injury, not less than 20 years, or more than life. Fine not more than \$10 million if an individual, \$50 million if not an individual.	Not less than 20 years or more than life. If death or serious injury, life imprisonment. Fine not more than \$20 million if an individual, \$75 million if not an individual.
Marijuana (schedule II)	100-999 kg marijuana mixture; or 100-999 marijuana plants	Not less than 5 years or more than 40 years. If death or serious bodily injury, not less than 20 years or more than life. Fine not more than \$5 million if an individual, \$25 million if not an individual.	Not less than 10 years or more than life. If death or serious bodily injury, life imprisonment. Fine not more than \$20 million if an individual, \$75 million if not an individual.
Marijuana (schedule I)	More than 10 kgs hashish; 50-99 kg marijuana mixture	No less than 20 years. If death or serious bodily injury, not less than 20 years or more than life. Fine \$1 million if an individual, \$5 million if not an individual.	Not less than 30 years. If death or serious bodily injury, life imprisonment. Fine \$2 million if an individual, \$10 million if not an individual.
Marijuana (schedule I) Hashish (schedule I)	Less than 50 kilograms marijuana (but does not include 50 or more marijuana plants regardless of weight marijuana plants;  1-49 marijuana plants  10 kg or less	Not less than 5 years. Fine not more than \$250,000, \$1 million if not an individual.	Not less than 10 years. Fine \$500,000 if an individual, \$2 million if not an individual.
Hashish Oil (schedule I)	1 kg or less		

\*The minimum sentence for violation after two or more prior convictions for a felony drug offense is a mandatory life imprisonment without release and a fine up to \$20 million if an individual and \$75 million if not an individual.



# University of Northern Colorado Policy Violations

All UNC students are required to comply with the Student Code of Conduct (“BEAR Code”), which sets behavioral expectations for students, including expectations regarding drug and alcohol use. If a student is found to have violated the Alcoholic Beverages and Controlled Substances policy(ies) as outlined in the BEAR Code, the student may be subject to discipline under the University of Northern Colorado’s BEAR Code, in addition to criminal prosecution under federal and Colorado laws. Outcomes include (but are not limited to):

- Warning, probation, suspension or expulsion
- Loss of privileges
- Education or counseling
- Housing modifications (e.g. residence hall suspension or expulsion)
- Parental notifications

## University Employee Violations

University Regulations 3-11-106 Sanctions for Violation of Alcohol Policy. When the University Police Department is called, any one of the following actions or combinations thereof may be taken:

- (1) Warn and release
- (2) Issue a summons
- (3) Physically book into jail (when other crime is involved)
- (4) Take to detoxification center
- (4) Refer for administrative action
- (6) Administratively, any one or a combination of the following sanctions may be invoked for violation of this policy:

- (a) Referral for alcohol/drug education
- (b) Referral for professional alcohol/drug evaluation
- (c) Referral for counseling/treatment
- (d) University Disciplinary Action
  - Departmental or organizational
  - University disciplinary sanctions for misconduct as written in the Student Rights and Responsibilities
- (e) Restricting responsible individual or group privileges
- (f) Loss of university recognition of sponsoring group or organization
- (g) Penalties as otherwise prescribed by law



University  
Regulations



“BEAR” Code



**BEAR CODE:  
BEHAVIORAL EXPECTATIONS  
AND RESPONSIBILITIES**





# Health Effects of Substance Use

## STIMULANTS

Type	Common and Commercial Names	Health Effects
Methamphetamine	Crystal, Meth, Desoxyn®	Anxiety, confusion, insomnia, mood problems, paranoia, hallucinations, severe dental problems, pregnancy issues
Cocaine	Coke, Crack	Nasal and throat damage, infection and death of bowel tissue, poor nutrition and weight loss, lung damage, pregnancy issues, risk of HIV

## DEPRESSANTS

Type	Common and Commercial Names	Health Effects
Barbituates	pentobarbital (Nembutal®)	Drowsiness, slurred speech, poor concentration, confusion, memory problems, lowered blood pressure, slowed breathing, risk of HIV
Benzodiazepines	alprazolam (Xanax®), chlorodiazepoxide (Librium®), diazepam (Valium®), lorazepam (Ativan®), triazolam (Halcion®)	
Sleep medications	eszopiclone (Lunesta®), zaleplon (Sonata®), zolpidem (Ambien®)	
Gamma-hydroxybutyrate	GHB	Euphoria, drowsiness, nausea, vomiting, confusion, memory loss, unconsciousness, slowed heart rate and breathing, lower body temperature, seizures, coma, death

## INHALANTS

Type	Common and Commercial Names	Health Effects
Various household products	Paint thinners, gasoline, lighter fluids, permanent markers, glue, hair spray, aerosol products, etc.	Confusion, euphoria, hallucination, death from asphyxiation, suffocation, seizures, coma, choking, liver and kidney damage

## Health Effects of Substance Use

### STIMULANTS

Type	Common and Commercial Names	Health Effects
Codeine	Various brand names	
Fentanyl	Actiq®, Duragesic®, Sublimaze®	
Hydrocodone or dihydrocodeinone	Vicodin®, Norco®, Zohydro®, and others	
Hydromorphone	Dilaudid®	
Meperidine	Demerol®	Pain relief, drowsiness, nausea, euphoria, slowed breathing, increased risk of overdose or addiction if misused, risk of miscarriage and HIV
Methadone	Dolophine®, Methadose®	
Morphine	Duramorph®, MS Contin®	
Oxycodone	OxyContin®, Percodan®, Percocet®, and others	
Osymorphone	Opana®	
Heroin		Euphoria, collapsed veins, abscesses (swollen tissue with pus), infection of the lining and valves in the heart, constipation and stomach cramps, liver or kidney disease, pneumonia

### HALLUCINOGENS

Type	Common and Commercial Names	Health Effects
Lysergic Acid Diethylamide	LSD, Acid	Distortion of reality; raised blood pressure, heart rate, body temperature; loss of appetite; frightening flashbacks; visual disturbances; paranoia; mood swings
Psilocybin	Magic mushrooms, Shrooms	Hallucinations, altered perception of time, inability to tell fantasy from reality, panic, nausea, vomiting, risk of flashbacks, memory problems
Mescaline	Peyote	Enhanced perception and feeling; hallucinations; euphoria; anxiety; increased body temperature, heart rate, blood pressure; seating; problems with movement
MDMA	Ecstasy, Molly	Lowered inhibition, enhanced sensory perception, sharp rise in body temperature leading to kidney failure or death, long-lasting confusion, depression, problems with attention and memory, increased anxiety

## Health Effects of Substance Use

### OTHER

Type	Common and Commercial Names	Health Effects
Cannabis	Marijuana, pot, weed, hash	Enhanced sensory perception and euphoria, relaxation, increased heart rate and appetite, problems with learning and memory, anxiety, mental health problems, chronic cough
Tobacco/Nicotine	Cigarettes, vaping, e-cigarettes, hookah, snuff, chew	Greatly increased risk of cancer, especially lung cancer when smoked and oral cancers when chewed; chronic bronchitis; emphysema; heart disease; leukemia; cataracts; pneumonia
Amphetamin and Methylphenidate	Adderall®, Concerta®, Ritalin®	Increased alertness, attention, energy; increased blood pressure and heart rate; narrowed blood vessels; increased blood sugar; opened-up breathing passages.  High doses: dangerously high body temperature, irregular heartbeat, heart disease, seizures

## How to Get Help: Alcohol and Other Drug Support

UNC encourages any community member who is concerned that they might have a problem with alcohol or drug use to turn to the resources on the next page for consultation. Consultations are also available through these resources when a community member needs to discuss the alcohol or substance use of another community member.





# Alcohol and Other Drug Support Resources

(Note: Confidential Resources specified with \* )

## Campus Support:



### UNC Counseling Center \*

2nd Floor | Cassidy Hall

☎ (970) 351-2496 (includes after hour support)

✉ UNCCounselingCenter@unco.edu



### Student Health Center \*

1st Floor | Cassidy Hall

☎ (970) 351-2412

✉ SHCfrontdesk@unco.edu

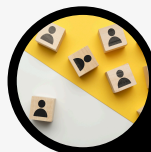


### Office of Health Promotion

2nd Floor | University Center

☎ (970) 351-1136

✉ HealthPromotion@unco.edu



### Employee Assistance Program \*

2nd Floor | Cassidy Hall

☎ (970) 351-2496

✉ UNCCounselingCenter@unco.edu



### Student Conduct & Accountability

2nd Floor | University Center

☎ (970) 351-2001

✉ SCA@unco.edu



### UNC Police Department

Grey Hall

☎ (970) 351-2245



### Student Outreach and Support

☎ (970) 351-2796

✉ SOS@unco.edu



### CARE Team

☎ (970) 351-2001

✉ DOS@unco.edu

## Off-Campus Support:

North Range Behavioral Health.....970-347-2120

Suicide and Crisis Lifeline (24/7)...988 (text/call)

Alcohol Drug Help Line.....800-923-4357

NOCO Area Intergroup (AA).....[Website](#)

Cocaine Anonymous Colorado....[Website](#)

Narcotics Anonymous.....[Website](#)

## A Note for UNC Employees:

Employee Assistance Program (EAP) services are funded by the department of Human Resources and are available to UNC faculty, staff and their household family members age 15 and older, provided the employee is receiving benefits. EAP services are provided by the staff of the UNC Counseling Center. Employees are eligible to receive 10 free sessions each fiscal year (July 1 - June 30).

Employees can engage in the following benefits: individual counseling, couples counseling, and psychiatry services. Voluntary attendance for counseling at the EAP is confidential and can only be divulged with the employee's written permission, although there are some legally mandated exceptions that will be explained at the initial consultation. All of an employee's information is protected, and nothing will appear in their personnel file. Feel free to discuss these issues with an EAP counselor if any questions arise. If you are a UNC employee who does not have benefits through the university, you may seek substance use services through North Range Behavioral Health. North Range Behavioral Health offers services for those who utilize Health First Colorado, CHP+ and Medicare. Those with low income and no insurance may be eligible for reduced fees. Proof of income is required in order to qualify for the sliding fee scale. Additionally, the Colorado Opioid Synergy (Larimer & Weld) helps people experiencing addiction find access to medication assisted treatment in Weld County. This organization offers free assistance to help access individualized medication and assisted treatment. More information can be found [here](#).



Health Promotion