

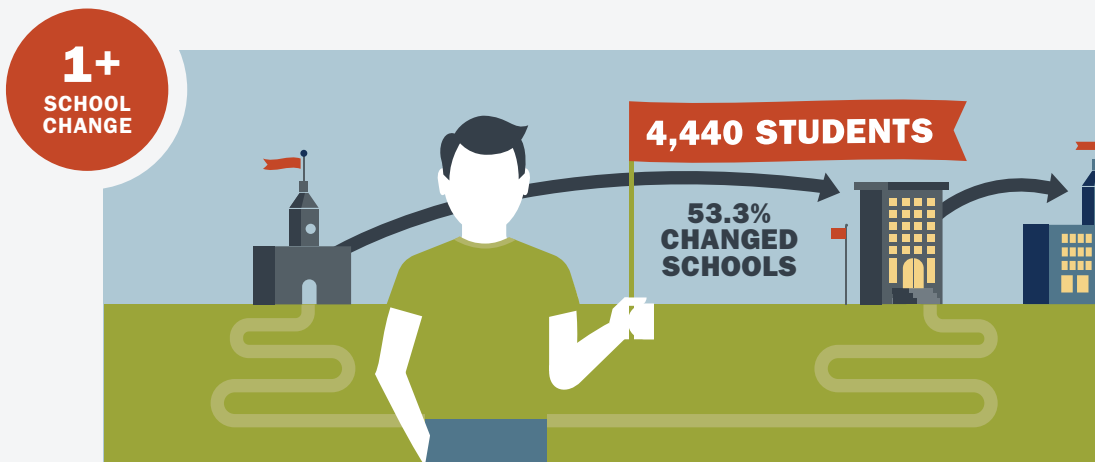
Every Transition Counts: K-12 Factsheet

CHANGING SCHOOLS CAN MEAN GAPS IN KNOWLEDGE, LOSING FRIENDS, AND FEELING LOST OR TEMPORARY

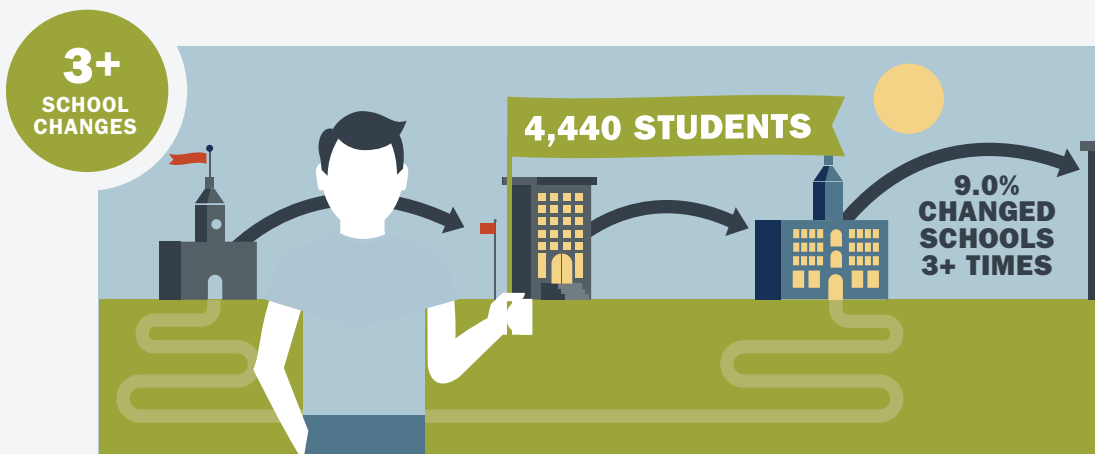
“ Stability is the biggest issue, because that’s your main issue in life, the biggest that you desire... and school is like the most normal it gets for stability... If you could figure something out that could work, I think that would be like the biggest change. ”

“ I’m not going to be here long enough to see what I can do, so I have fun as opposed to learn. I don’t care to learn. I’m not even going to have the chance to learn, I’m going to be at a different school, so who cares. ”

HALF OF STUDENTS IN FOSTER CARE CHANGE SCHOOLS EACH YEAR, SOME CHANGE SCHOOLS MULTIPLE TIMES

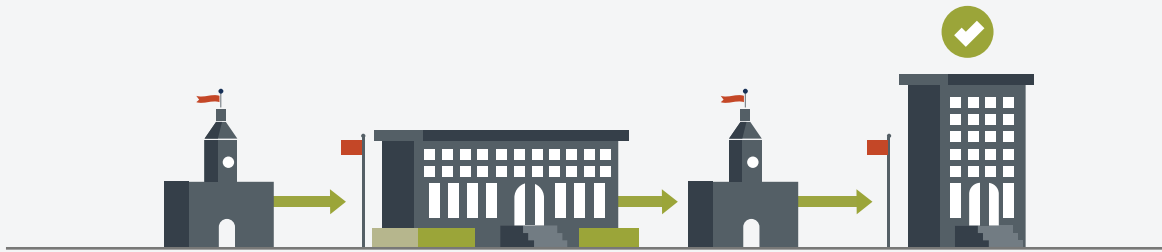


IN 2013-14 | **4,440 STUDENTS** IN FOSTER CARE WERE ENROLLED IN A CO SCHOOL BY OCT 1ST. **53.3%** CHANGED SCHOOLS 1 OR MORE TIMES THAT SCHOOL YEAR



IN 2013-14 | **4,440 STUDENTS** IN FOSTER CARE WERE ENROLLED IN A CO SCHOOL BY OCT 1ST. **9.0%** CHANGED SCHOOLS 3 OR MORE TIMES THAT SCHOOL YEAR

STUDENTS IN FOSTER CARE MOST AT-RISK FOR FREQUENT SCHOOL CHANGES



7TH-11TH GRADERS



HIGH SCHOOL MALES



BLACK OR HISPANIC MIDDLE AND HIGH SCHOOL STUDENTS



MIDDLE SCHOOL

HIGH SCHOOL

**MORE FOSTER HOMES NEAR SCHOOLS ARE NEEDED
SO THESE STUDENTS CAN STAY IN THEIR SCHOOLS**

www.cofosterandadopt.org

Questions: Elysia.Clemens@unco.edu
P. 970.351.3044

Data Source: Colorado Department of Education and Colorado Department of Human Services
Quotes: Mile High United Way, Focus Groups with Former Foster Youth

COMING SOON - Full Report: Every Transition Counts www.unco.edu/cebs/foster-care-research

Acknowledgement:

The research reported here was supported by the Institute of Education Sciences, U.S. Department of Education, through Grant R305H150007 to University of Northern Colorado. The opinions expressed are those of the authors and do not represent views of the Institute or the U.S. Department of Education.

