



COUNSELING PSYCHOLOGY DOCTORAL PROGRAM FALL 2012 NEWSLETTER

The introduction to this issue is being written while I am on a sabbatical leave and collecting data in the Greek University. I am interested in self-stigma for asking for psychological help and the impact of stress, anxiety and depression on decisions to seek professional help. The people of this small country with a very long history have been experiencing economic and sociopolitical crises in the past year. It is also a very beautiful country that takes your breath away with the blue skies and sea. It is hoped that the results of the study can help support the continuation of counseling centers. Some are closing as the economic difficulties are impacting University budgets. I hope to be able to make cross cultural comparisons on this topic.

The newsletter gives us the opportunity to celebrate achievements and to address changes. Welcome to our new cohort of seven students. A short note on each student is included in this issue. All incoming students have been awarded 15 hour Graduate Assistantships; we look forward to working with all of you. Best wishes to the five doctoral students, Michael Jenkins-Guarneri, Liz Legg, Laura Oyer, Emily Richter and Geri Tien, who have started their internships (all APA internships) this fall. Many congratulations to the ten graduates in spring and summer 2012, and best wishes as you begin your careers. It was an honor working with you and

seeing you grow and blossom. One of the graduates, Richard Bunce, is the last graduate with a Psy.D. degree; the degree has now been phased out. We transitioned into the Ph.D. a few years ago and in 2010 became an APA-accredited PhD program. It is one of my pleasures to take pictures of our students as they ring the bell of freedom in the main office after they have defended their dissertations.

This issue of the newsletter continues to highlight the research productivity of our students and faculty both within and outside the University. In Spring 2012, we celebrated the First Counseling Psychology Research Day. Current students who are on campus are required to present a research project in a poster format during the CP Research Day. This was a way to formalize the ongoing research students are involved in with their research advisors, professors and mentors. It is an opportunity to share and learn from each other. Students get to know each other very well in terms of clinical skills as they take clinical practica in cohort groups in our in-house Psychological Services Clinic. However, they often did not know the research activities of their classmates unless they were in the same research team. We felt that by sharing their research in the CP Research Day their professional skills in disseminating research would solidify, while educating others and hopefully inspiring further research. Our

program allows the freedom for students to choose their research interests and it was remarkable how diverse the topics were and the seriousness students showed in approaching the task. We look forward to the new research projects for Spring 2013. The number of presentations at APA is steadily increasing and at least seventeen of our students and very recent graduates presented in Orlando this past summer 2012.

We are in self-study mode as we prepare for our next visit from the APA accreditation team, and are contacting graduates and current students to gather all kinds of data. It is an opportunity to review who we are as a program and to use feedback to reexamine our direction. Many of the GAs have been and will be assisting with this process. Please take very seriously all requests for data while you are in the program and after graduation.

Many thanks to Dr. Johnson who returned from his sabbatical leave and is acting as the interim chair and training director during Fall 2012.

Lia Softas-Nall, PhD

Counseling Psychology
Chair and Director of Training

Inside this Issue

2 Spring & Summer Graduates

3 Welcome New Students

4-7 Presentations and Publications

7 Alumni Award

8 Psychological Services Clinic

9 Awards

10 External Practica

11 CPSO, CPA, & Wright Family

Bringing
education
to life.

Congratulations to our Spring & Summer 2012 Graduates!!



Left to Right: Dr. Cardona, Dr. Softas, **Dr. Heather A. Bean**, Dr. Clukey, Dr. Wright

Dissertation: *The Lived Experience of Stay-at-Home Mothers when their Children attend School*



Left to Right: Dr. Johnson, **Dr. Lisa Bobby**, Dr. Softas, and Dr. Nathan Kling

Dissertation: *Shaping Attitudes towards Psychological Services*

Dr. Catherine Phillips Carrico

Dissertation: *A Look Inside the Families of Firefighters: A Qualitative Study*

Dr. Cassie V. Comeau

Dissertation: *Exploring the Relationship between Connectedness to Nature, Wellness, and Spiritual Well-Being*

Dr. Amy Sholler Dreier

Dissertation: *Defining an Impact Construct Applicable to Offender Therapists: A Grounded Theory Approach*



Left to Right: Dr. Johnson, **Dr. Erica Len Hope**, and Dr. O'Halloran
Dissertation: *The Effects of Self-Esteem and Romantic Attachment on Safe Sex Behaviors among Young College Students*



Left to Right: Dr. Wright, Dr. Gonzalez, **Dr. Denise Lucia**, Dr. Hutchinson, and Dr. Black
Dissertation: *Dissociative Experiences, Subclinical Anxiety and Perceived Level of Psychological Distress in a Nonclinical Population*



Left to Right: Dr. Cardona, Dr. Clukey, Dr. Softas, **Dr. Emily Porter**, and Dr. Johnson
Dissertation: *The Effects of a Traditional Gender Role Background on the Self-Esteem and Confidence of Women in Graduate School*

Counseling Psychology Graduates



Dr. Lori Ann Romont

Dissertation: *Resiliency with Pre-Adjudicated Females*



Left to Right: Dr. Helm, Dr. Softas, **Dr. Sunda TeBockhorst**, Dr. O'Halloran, and Dr. Henderson
Dissertation: *I Still have to Overcome just Being Captured Inside Myself: The Experience and Meaning of Peritraumatic Tonic Immobility among Survivors of Sexual Violence*



Left to Right: Dr. Johnson and **Dr. Richard Bunce**

Dissertation: *An Evaluation of a Theoretical Model of Malingered Neuropsychological Dysfunction*



Dr. Johnson, **Dr. Riley McGrath**, Dr. Wright

Dissertation: *Using Videos with Education, Contact and Education/Contact to Reduce Self-stigma on College Students*

Welcome New Students

Name: Dylan Firsick

Where you are from: Originally Lancaster CA, but spent two years living in Denver and most recently lived in Huntington Beach, CA.

Degree: B.A. in Psychology from Biola University in La Mirada, CA and an M.A. in Clinical Psychology from the University of Colorado in Denver

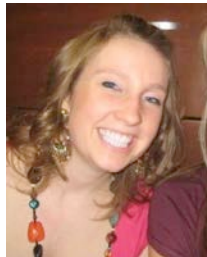
Fun fact: "I am a huge sports fan, I played soccer in college and although the Los Angeles Angels are my favorite team, I have become a converted Rockies and Broncos fan from living in Denver. I also spend way too much time on fantasy football ☺."

Name: Rachel Mary Haug

Where you are from: St. Cloud, MN

Degree: B.A. in Psychology

Fun fact: "I have been skydiving and would love to go again."



Name: Tanya Hutchins

Where you are from: New Orleans, LA

Degree: MS in Counseling Psychology

Fun fact: "I move a lot."

Name: Jason Kacmarski

Where you are from: I was originally born in Juneau, Alaska, but am coming to Colorado from Harrisonburg Virginia where I've lived since 2004.

Degree: M.A. and Ed.S in Clinical Mental Health Counseling from James Madison University

Fun fact: I graduated high school in South Korea

Name: Blair Nyline

Where you are from: I'm originally from Minnesota, but I moved to CO three years ago for my Master's degree.

Degree: M.A. in Clinical Counseling

Fun fact: "I have a horrible sense of direction and get lost going almost everywhere."



Name: Caroline Hicks

Where you are from: Twin Brooks, SD

Degree: BS in Psychology from South Dakota State University; Brookings, SD

Fun fact: I am the youngest of 6 children, but the only redhead.

Name: Chloe Hinton

Where you are from: Originally from Brooklyn Park, Minnesota, recently from Fargo, North Dakota

Degree: BA in Psychology with a Sociology Minor, going for my PhD in Counseling Psychology

Fun Fact: I really like to salsa dance!



Counseling Psychology Doctoral Program

For more information visit: <http://www.unco.edu/cebs/counspsyh/index.html>.

Faculty and Student Publications and Presentations since the newsletter March 2012

Bethune, M. & Johnson, B.D. (2012, August). *Predicting counselors' GPA and internship ratings: Evidence for the MMPI-II's incremental validity*. Poster session presented at the 120th Annual Convention of the American Psychological Association, Orlando, FL.

Chao, R. C.-L., Wei, M., Spanierman, L., Longo, J., & **Northart, D.** (2012, August). *White racial identity attitudes and White empathy: The moderation effect of openness to diversity*. Poster session presented at the 120th Annual Convention of the American Psychological Association, Orlando, FL.

Chao, R. C.-L., **Northart, D.**, Berger, B., Dasgupta, D., & Wang, C. (2012, August). *Race/Ethnicity and multicultural competence among counselor trainees: Training, racial/ethnic identity, and color-blind attitude*. Poster session presented at the 120th Annual Convention of the American Psychological Association, Orlando, FL.

Cohen, M. L., & Wright, S. L. (2012, August). *Relationship between attachment and religiosity: A meta-analysis*. Poster session presented at the 120th Annual Convention of the American Psychological Association, Orlando, FL.



Griess, S.J., Johnson, B.D., Peters, A., Roche, J., & Walters, M. (2012, August). *Perceived parenting style and its relationship to happiness, hopefulness and optimism in a college student sample*. Poster session presented at the 120th Annual Convention of the American Psychological Association, Orlando, FL.

Heath, T., **O'Halloran, M.S.**, & Walker, M. (April, 2012). *What Works in Psychotherapy: Qualitative Accounts of Psychotherapist and Clients*. Poster presented at the Annual Conference of the Rocky Mountain Psychological Association, Reno, NV.

Ingala, A., Softas-Nall, B., & Peters, A. S. (2012, August). *College adjustment for veterans and the role of support*. Poster session presented at the 120th Annual Convention of the American Psychological Association, Orlando, FL.

Jenkins-Guarnieri, M.A., Wright, S., & Johnson, B. (2012, August). *Development and validation of a social media use scale*. Poster session presented at the 120th Annual Convention of the American Psychological Association, Orlando, FL.

Legg, E., & O'Halloran, M.S., (2012, August). *Eye movement desensitization and reprocessing in conjoint couples therapy: A grounded theory study*. Poster session presented at the 120th Annual Convention of the American Psychological Association, Orlando, FL.

Mahoney, M. A. (2012, August). *Overseas deployment narratives of military veterans and implications for psychologists*. Poster session presented at the 120th Annual Convention of the American Psychological Association, Orlando, FL.

O'Halloran, M.S., & Rizzolo, S. Wacker, R. (June, 2012) *Evaluating the Effectiveness of a Marriage and Relationship Education Program*. Seventh International Conference on Interdisciplinary Social Sciences, Barcelona, Spain. Paper presentation.

Peters, A. S. (2012, April). *The Process of Cultural Identity Formation in College Students*. Poster session presented at Rocky Mountain Psychological Association, Reno, NV.

Peters, A. S., Ruechel, E. M., Udomvisawakul, A., & Rings, J. A. (2012, April). *Prolonged Grief Symptom Severity and Suicide Risk among Bereaved LGBTQ Undergraduates*. Poster session presented at Rocky Mountain Psychological Association, Reno, NV.

Pote, S., & Wright, S. L. (2012, August). *A meta-analysis on the relationship between attachment style and the regulation of affect*. Poster session presented at the 120th Annual Convention of the American Psychological Association, Orlando, FL.

Rings, J.A., Alexander, P.A., Silvers, V.N., & Gutierrez, P.M. (2012). Adapting the safety planning intervention for use in a veterans psychiatric inpatient group setting. *Journal of Mental Health Counseling*, 34(2), 95-109.

Rings, J.A., & Riva, M.T. (2012, August). *Closeness to the deceased, prolonged grief, and suicide risk among bereaved undergraduates*. Poster session presented at the 120th Annual Convention of the American Psychological Association, Orlando, FL.

Roche, J., Peters, A., Walters, M., Johnson, B.D., & Sones, J. (2012, August). *In search of the helicopter parent: Characteristics and theoretical underpinnings*. Poster session presented at the 120th Annual Convention of the American Psychological Association, Orlando, FL.



Roche, J. (2012, April). "I'm Homeless Not Helpless": An Exploration of Homeless Adults' Attachment-Based Narratives. Poster session presented at Rocky Mountain Psychological Association, Reno, NV.

Association, Reno, NV.

Ruechel, E. M., Peters, A. S., Udomvisawakul, A., & Rings, J. A. (2012, April). *Impacts of Blame Assignment and Cause of Death on Prolonged Grief Symptomatology and Suicide Risk*. Poster session presented at Rocky Mountain Psychological Association, Reno, NV.

Schneeberger, S. F., Softas-Nall, B., Peters, A. S., & Northart, D. (2012, August). *Mysticism, transformation and appreciation for life: Expanding the conscious world*. Poster session presented at the 120th Annual Convention of the American Psychological Association, Orlando, FL.

Sones, J. & Rings, J. A. (2012, April). *Later Life Repartnering and the Family System: The Current State of the Literature and Future Directions*. Poster session presented at Rocky Mountain Psychological Association, Reno, NV.

Wirka-Leiker, C., O'Halloran, M.S., & Breseke, S. (2012, August). *Early adolescent female bullying: student and educator perspectives*. Poster session presented at the 120th Annual Convention of the American Psychological Association, Orlando, FL.

Wright, S. L., Wright, D. A., & Jenkins-Guarnieri, M. A. (2012, August). *Development of the social efficacy and outcome expectations scale*. Poster session presented at the 120th Annual Convention of the American Psychological Association, Orlando, FL.

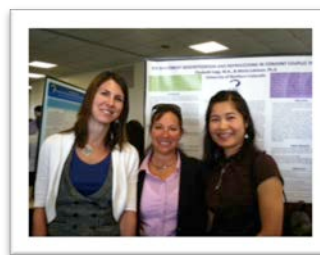
SRM Research Night Presentations

Every semester the Department of Applied Statistics and Research Methods provides an opportunity for students taking a higher-level Quantitative and/or Qualitative class to present their research project. For Counseling Psychology students, the research evening is designed to serve as the final research report for SRM 600: Introduction to Graduate Research; SRM 680: Introduction to Qualitative Research; SRM 686: Qualitative Case Study Research; SRM 700: Advanced Research Methods; SRM 705: Advanced Issues in Research Methods; SRM 770: Advanced Evaluation Methods; HESA 781: Collaborative Inquiry for Scholars and Leaders. Below are the Spring 2012 Presentations.

Cohen, M. (May 2012). *The Adolescent Happiness Experience: Portrait of a High School Student*

Dvorak, M. & Oyer, L. (May 2012). *The Moderating Effects of Emotional Intelligence on the Relationship between Career Decision-Making Self-Efficacy and Parental Attachment*.

Legg, E. (May 2012). *Eye Movement Desensitization and Reprocessing in Conjoint Couples Therapy*.



Oyer, L. (May 2012). *When Two Worlds Collide: A Case Study of a Female College Athlete Negotiating the Feminine and Athletic Cultures*.

Peters, A. S. (May 2012). *A Deeper Look into Cultural Identity Formation and Integration*.

Roche, J. (May 2012). *Promoting Resident Resiliency: A Strengths-Based Exploration at a Homeless Shelter*.

Suk-erb, W. (May 2012). *Failing to Succeed: Resilience in Graduate Psychology Student Comprehensive Exam survivors: A Case Study*.

Tien, N. C. (May 2012). *Communication and Relationships of Intercultural/multilingual Couples: Cultural and Language Differences*.

Valdez, J. (May 2012). *Help Seeking Attitudes among Hispanic and Caucasian Freshmen*.

Walters, M. (May 2012). *Exploring Authenticity in Older Adults*.

UNC Research Day

Academic Excellence Week is coordinated and sponsored by the Office of Undergraduate Research, the Center for Honors, Scholars and Leadership, and the Graduate Student Association along with academic departments and programs across the campus. It is a university wide opportunity for students and faculty to present their research.

Andrade, S., Suk-erb, W., Locharoenrat, W. (April 2012). *Teaching Sexual Education and Preventing Sexual Abuse for Adolescents with Autism*.

Legg, E. (April 2012). *Eye Movement Desensitization and Reprocessing in Conjoint Couples Therapy*.

Murdock, J., Buckley, T., Oyer, L., & Welch, R. (April 2012). *Expectations and Beliefs about Career Services from Current UNC Students*.

Oyer, L., Ruechel, B., Joy, K., Sanders, J. (April 2012). *Understanding the Working Alliance between Clients Diagnosed with Anorexia Nervosa and Therapists in Individual Psychotherapy: A Phenomenological Approach*.

Peters, A., Ruechel, B., Rings, J. (April 2012). *Prolonged Grief Symptom Severity and Suicide Risk among Bereaved LGBT Undergraduates*.

Roche, J. (April 2012). "I'm Homeless Not Hopeless": An Exploration of Homeless Adults' Attachment-Based Narratives

Ruechel, B., Peters, A., Rings, J. (April 2012). *Impacts of Blame Assignment and Cause of Death on Prolonged Grief Symptomatology and Suicide Risk.*

Sones, J. (April 2012). *Later Life Repartnering and the Family System: The Current State of the Literature.*

Suk-erb, W. (April 2012). *Failing to Succeed, Resilience in Psychology Graduate Students Comprehensive Exam Survivors: A Case study.*

Suk-erb, W. (April 2012). *The Experiences of Training Practica Students at the University of Northern Colorado.*

Tien, N. C. (April 2012). *Communication and Relationships of Intercultural/Multilingual Couples: Cultural and Language Differences.*

Valdez, J. (April 2012). *The Role of Non-Cognitive Factors in the First Year Seminar.*

Counseling Psychology Research Day

This year was the introduction of the annual Counseling Psychology Research Day. This event allowed CP students to showcase their research efforts and be informed of the research interests and efforts of other students throughout the department. The purpose is to make students and faculty aware of the research culture and productivity of our department and to provide students with a chance to present their work to their colleagues and faculty. More than 20 posters were presented on some of the current research of the counseling psychology doctoral students. A wide range of innovative topics were covered.



Cohen, M. L. (2012, April). *The Adolescent Experience of Happiness.*



Dvorak, M. (2012, April). *Career Transition Among Elite Endurance Athletes.*

Groman, R., Dreiling, E., & Softas-Nall, B. (2012, April). *Exploring the Effects of Feedback in Couple and Family Therapy.*

Jenkins-Guarnieri, M., Wright, S. L. & Johnson, B (2012, April). *Development and Validation of a Social Media Use Integration Scale*

Legg, E., & Lahman, M. (2012, April). *Eye Movement Desensitization and Reprocessing in Conjoint Couples Therapy.*



Levas-Luckman, D., & Medina, A. (2012, April). *The Experience of Trauma in Graduate School: Vicarious Traumatization among Counselors in Training.*

Oyer, L. (2012, April). *Understanding the Working Alliance between Clients Diagnosed with Anorexia Nervosa and Therapists in Individual Psychotherapy: A Phenomenological Approach.*

Pacquette, L. C., Softas-Nall, B. & Mahoney, M. (2012, April). *Animal Assisted Therapy: Practitioner Perspectives.*

Peters, A. S., Ruechel, E. M., Rings, J. A., & Udomvisawakul, A. (2012, April). *Prolonged Grief Symptom Severity and Suicide Risk among Bereaved LGBTQ Undergraduates.*

Pote, S., Northart, D., Kim, K., & Wright, S. L. (2012, April). *The Relationship Between Global Attachment and Attachment to the Supervisor in the Counseling Self-Efficacy of Graduate Trainees.*



Wright, S. L. (2012, April). *The Relationship Between Global Attachment and Attachment to the Supervisor in the Counseling Self-Efficacy of Graduate Trainees.*

Richter, E., Walters, M., Horne, M. & Johnson, B. (2012, April). *A Model for Assessing Parenting Competencies.*

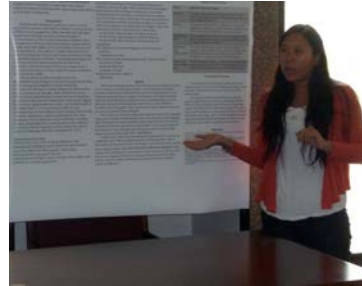
Roche, J. (2012, April). "I'm Homeless Not Hopeless": An Exploration of Homeless Adults' Attachment-Based Narrative.

Sones, J. R., & Rings, J. A. (2012, April). *Later Life Repartnering and the Family System: The Current State of the*

Literature and Future Directions.

Suk-erb, W. (2012, April). *Group Process Integrative Model.*

Samaniego-Muñoz, K. (2012, April). *Being Undocumented in the U.S.: The Impact on Mexican Immigrants' Mental Health.*



Schenk, L. (2012, April). *Experiences of Mindfulness Among Hatha Yoga Practitioners.*

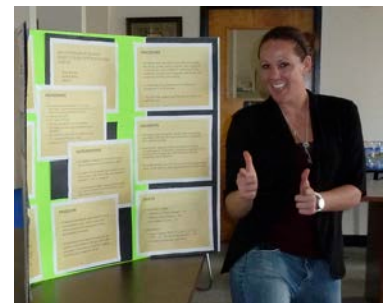


Tien, N. C., & Softas-Nall, B. (2012, April). *Communication and Relationships of Intercultural/Multilingual Couples: Cultural and Language Differences Poster Presentation.*

Valdez, J. (2012, April). *Alcohol and Triggered Displaced Aggression: Effects on Hispanic Males.*

Walker, R., & McGrath, R. (2012, April). *"Are Counselors in Training Ready to Work with Transgender Clients?"*

Wallis, A. (2012, April). *Group Process Model and Techniques.*



Alumni Award

Dr. Arlene Weimer (PsyD, 2006) accepted the first Clarion Award for her efforts to promote understanding about mental health and reaching out to the community during Centennial Mental Health Center's annual public forum. The name of the award stands for speaking out clearly and loudly for mental health issues across the region for clients' rights, issues, community education, outreach and individual intervention. The Clarion Award recipient may be a person who has uniquely impacted communities by breaking down barriers and establishing a standard of excellence. Weimer received the Clarion Award for her fierce advocacy for her clients, her arguing for "right-sized" service and common sense practices. She has embraced new approaches and evidence-based practices, helping her clients greatly.



For more information regarding program accreditation, contact the APA's Office of Program Consultation and Accreditation, 750 1st Street NE, Washington, DC 20002-4242 or at (202) 336-5979 or at www.apa.org/ed/accreditation/.

Psychological Services Clinic



The Psychological Services Clinic (PSC) is a mental health agency operated in the College of Education and Behavioral Sciences (CEBS) at the University of Northern Colorado (UNC). For over 50 years, the Clinic has offered low-cost counseling and psychological assessment to the Northern Colorado community. The Clinic Offers:

- Individual Counseling (for children, adolescents and adults)
- Play Therapy
- Couples and Family Therapy
- Group Counseling
- Psychological Assessments

We offer assistance in addressing an array of concerns such as: depression, trauma, grief and loss, relational conflict, stress management, anxiety, low self-esteem, eating disorders, drug or alcohol use, marital distress, employment stress, relocation struggles, parenting issues, family conflict, sexuality, and life transitions.

We provide assessments to evaluate disorders that may affect academic or occupational success and overall well-being. This includes cognitive, personality, and neuropsychological assessments, which are offered to individuals ages 5 to 90 years. These assessments can identify learning disabilities, attention deficit disorders, personality, developmental and emotional problems. All assessments include consultation, testing and feedback sessions and a written report providing recommendations and professional referrals.

Fees for counseling services are set on a sliding fee scale according to family income and ability to pay. The first session is free, and most individual and family counseling fees are \$40 per semester, with the exception of services provided by advanced doctorate graduate clinicians, which range from \$10 - \$60 per session. Group counseling begins at \$20 per semester. Fees for assessment services begin at \$350.

Clinic Director: Dr. O'Halloran

Dr. O'Halloran is the Clinic Director for the Psychological Services Clinic. She is responsible for overseeing what happens in the PSC and to enforce HIPAA regulations. Dr. O'Halloran belongs to the APTC, which is mostly composed of clinicians and counselors who support and back each other up. She has been a member for 12 years and has been the clinic director for 16 years.

"I don't oversee all the clinical training because all faculty do clinical training with their students. We follow CACREP and APA guidelines and encourage the usage of EST's. "Research application is something we want to do more of," shared Dr. O'Halloran. For the future, Dr. O'Halloran sees research, technology, and grant writing as being an important part of the PSC. She has written a grant to help the PSC continue to serve the underserved population in our community. Her goal is to work with other faculty to go back to writing the grant and submit it.

2011-2012 Clinic GA: Emily Richter

As the former clinic GA, my primary responsibilities were to generate clientele for our training clinic, foster and maintain positive relationships with community members and agencies, provide outreach services/presentations/workshops for agencies, and serve as a liaison between faculty, clinic staff, and counselors in training. Managing the clinic staff involves training and supervising client intakes, practicum scheduling, and development of outreach presentations for various presentations on campus and in the community.

Our referrals are generated from numerous sources. We get many referrals via "word of mouth" – clients refer friends and family for our services and relay positive experiences with our student clinicians. Our clinic staff members spend a great deal of time contacting community agencies such as health care organizations, schools, county organizations, physicians, dentists, churches, early education facilities, and other mental health care providers by phone and mail. In addition, we work closely with many campus organizations such as the Panhellenic council and intrafraternity council, Disability Student Services, and the campus cultural centers providing outreach presentations and psychoeducational workshops. We also maintain several websites, which market our services through UNCO.edu and PsychologyToday.com.

2012-2013 Clinic GA: Diana Levas-Luckman

As the PSC 2012-2013 GA, I hope to implement new, innovative ways to increase clinic outreach. Through collaborating with faculty, students, and establishing liaisons with other nearby organizations and colleges within the community, I hope to gain a better sense of how to better reach underserved populations and more effectively reach out to those already being served.

From my experience working in the PSC thus far, the community views it as a valuable resource for effective and inexpensive counseling and assessment services. Thus, it is most important to continue to spread the word to ensure that everyone in need is fully aware of the services that we provide.

Awards



Amy Dreier received the Dean's Citation for Excellence award. The Graduate Dean's Citation for Excellence is awarded to students nominated by their school in recognition of superior academic achievement in graduate studies.

Michael Jenkins-Guarnieri received the Spring Convocation award on April 10th. Mr. Jenkins-Guarnieri is a co-author in three juried publications and is working on several other research projects close to submission for publication. His topics of interests include: *Student persistence and college self-efficacy, development and validation of a social media integration scale, and meta-analyses of student evaluations*. He has presented on these topics and many others in ten National Conventions such as APA and RMPA. In addition to his scholarly activities, Mr. Jenkins-Guarnieri teaches Abnormal Psychology at the undergraduate level and UNC's First Year Experience. He served as the interim director for the First Year Experience Program. As a clinician and counselor he is completing an External Practicum at the VA clinic here in Greeley and makes comprehensive assessments and diagnostic interviews. Furthermore, Mr. Jenkins-Guarnieri was instrumental in the creation of the Counseling Psychology Student Organization in our Department and organizing various activities and speakers to support and inform the student body. He also served as the student representative to the faculty. Mr. Jenkins-Guarnieri has shown himself to be responsible and productive in all areas of scholarly



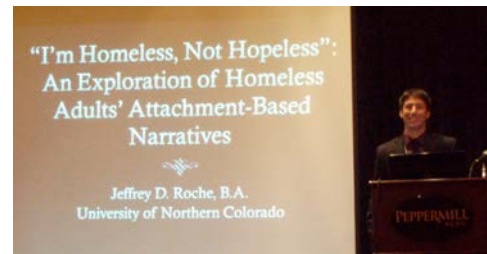
activities, teaching, clinical work, and leadership. For these reasons the faculty has nominated him for the award.

Annette Peters

received the PSI CHI Award at RMPA on April 13th, 2010 for her research on *The Process of Cultural Identity Formation in College Students*.



Jeff Roche was nominated for the RMPA Diversity Award on April 14th, 2012 for his research *"I'm Homeless Not Helpless": An Exploration of Homeless Adults' Attachment-Based Narratives*.



Geri Tien was placed in an internship at Aurora Mental Health Center. She was not mentioned in the Spring 2012 newsletter with the other four interns (Emily Richter, Liz Legg, Michael Jenkins, and Laura Oyer) because she matched after the last issue came out. Geri will still be at Asian Pacific Development Center for two days a week.

External Practica

CP students are sharing where they are doing their 2012-2013 External Practica

Name: **Em Dreiling**, M.A.
Year: 2nd year
Position: Colorado State University Counseling Center, Fort Collins
Hours: 15 hours

Name: **Marek Dvorak**, B.A.
Year: 4th year
Position: University of Colorado Counseling Center, Boulder
Hours: 20 hours

Name: **Dayna Northart**, M.A.
Year: 2nd year
Position: Aurora Mental Health
Hours: 12-15 hours

Name: **Annette Peters**, B.A.
Year: 3rd year
Position: Perklen Center, Greeley
Hours: 12-15 hours

Name: **Steven Pote**, M.A.
Year: 2nd year
Position: Aurora Mental Health
Hours: 12-15 hours

Name: **Jeff Roche**, B.A.
Year: 3rd year
Position: Platte Valley Youth Services Center, Greeley
Hours: 10-15 hours

Name: **Laura Schenck**, M.A.
Year: 3rd year
Position: University of Northern Colorado Counseling Center - Greeley
Hours: 12-16 hours

Name: **Ricki Walker**, M.A.
Year: 4th year
Position: University of Northern Colorado Counseling Center, Greeley
Hours: 12-16 hours

Name: **Jesse Valdez**, M.A.
Year: 3rd year
Position: Perklen Center, Greeley

Hours: 10 hours
Name: **Meagan Walters**, B.A.
Year: 4th year
Position: Perklen Center, Greeley
Hours: 15-20 hours

Some previous external practica experiences from Fall 2011-Spring 2012

Liz Legg

General Services Advanced Practicum Student, Colorado State University Health Network

13 hours per week: 5 hours of individual/couples therapy sessions, 1 hour of Initial Consultation (intake), 2 hours of on-call (drop-in brief intakes, crisis work as needed), 1 hour of individual supervision, 1 hour of group supervision/seminar, 3 hours of clinical administration duties (paperwork, phone calls, etc.); during the second semester I had 7 hours of sessions per week. The experience was wonderful! The staff are very welcoming, supportive, and warm. The range of client issues is broad and provides an opportunity for exposure to different diagnostic issues and populations.

Laura Oyer

External practicum at UNC Counseling Center

I completed 13 hours at the practicum site per week. At the practicum site, I saw 6 clients per week for individual counseling, conducted 2 intake interviews (each 1 hour), and had 1 hour of individual supervision by a senior staff member. I also attended the staff meeting (one per week) with senior staff, interns, and external practicum students for 1.5 hours a week. The "leftover" time was spent completing case notes and/or intake reports. It has helped me realize that I really want to work at a university counseling center for my internship, as well as when I graduate and look for my first job as a psychologist. I have appreciated the senior staff's

effort to make me feel welcome and the warmth and encouragement they have provided.

Geri Tien

External Practicum at Aurora Mental Health Center

12 hours/week. It was less work at the beginning but as time went by I had more clients and the workload increased; there were couple of times I have to work extra hours just to get things done on time.

The experience was amazing! The real world experience really makes me think if this is what I want to do and thank God it is. I love working with diverse and under-represented population, also the experience of working in a community mental health agency is very different than in our in-house clinic and I learned so much. This experience definitely prepared me better for internship.

Melissa Horne

Graduate Assistant at Disability Support Services

16-20 hours a week. Lots of working with assessments, including reviewing them, contacting psychologists and medical doctors, meeting with students about accommodations for different disabilities, working with conflict resolution between students, professors, and each other. Running lots of presentations and a Student Learning Series to assist students with disabilities in the transition and adjustment process. Supervising undergraduate student employees that work at our front desk. It's been pretty amazing! I think it's probably one of the best GAs in the school if you have the right personality to fit into the office!

News from the Counseling Psychology Student Organization (CPSO)



2011-2012 Officers: Faculty Supervisor: Dr. Stephen Wright; Presidents: Michael Jenkins and Melissa Horne; Secretary: Emily Richter; Treasurer: Laura Oyer; Social chair: Meagan Walters

2012-2013 Officers: Faculty Supervisor: Dr. Stephen Wright; President: Jesse Valdez, Vice President: Annette Peters, Secretary: Marsha Cohen, Treasurer: Beth Ruechel, Social chair: Jeff Roche

The Counseling Psychology Student Organization shall exist for the purposes of supporting the academic success and social community of counseling psychology doctoral students at the University of Northern Colorado. The CPSO will also assist with facilitating communication between students within the Counseling Psychology program at University of Northern Colorado and between students at UNC and professional organizations such as the American Psychological Association (APA). A major goal of the organization is to promote the professional development of counseling psychology graduate students.

Colorado Psychological Association (CPA)—by Janae Sones, Student Board Member

The department hosted the Colorado Psychological Association's (CPA) annual non-metro board meeting in May, providing the opportunity for UNC faculty and students to network and learn about the activities of CPA. The CPA is the state organization of the American Psychological Association. It works on a local and national level to advocate for and promote psychological health and well-being, not to mention the psychology profession. As one of the CPA student board members, I help other students get involved in the various CPA divisions and committees, as well as host networking opportunities for students with Colorado psychologists.



CPA membership provides many benefits for students, including:

- a one-on-one mentoring program
- opportunities to work on various committees, including the legislative committee who works with state official and politicians on legislation important to Colorado psychologists
- access to a 24-hour ethics hotline
- Discounts on all CPA programs and events
- CPA's *The Colorado Psychologist*, a bimonthly newsletter containing local and national information important to Colorado psychologists

Membership applications can be found in the graduate resource room or online at www.coloradopsych.org.

Drs. Wright & Wright Family

Name: Isabelle

Age: born 2-17-12

Eye Color: Blue

Favorite Toy: stuffed monkey

First Word: too little to talk

Favorite Food: mango

Fun Fact: she giggles at her sister as she pushes her in a swing

Name: Olivia

Age: 2 (2-13-10)

Eye Color: brown

Favorite Toy: books

First Word: da da

Favorite Food: yogurt

Fun Fact: she names all of her dolls "Isabelle"

