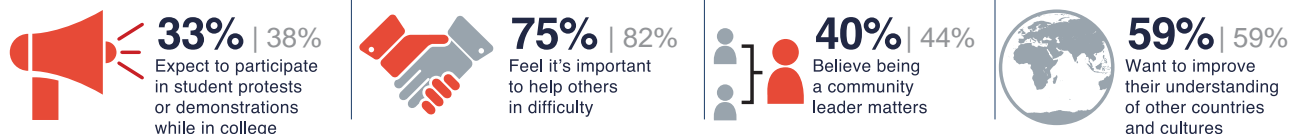


2015 FRESHMEN

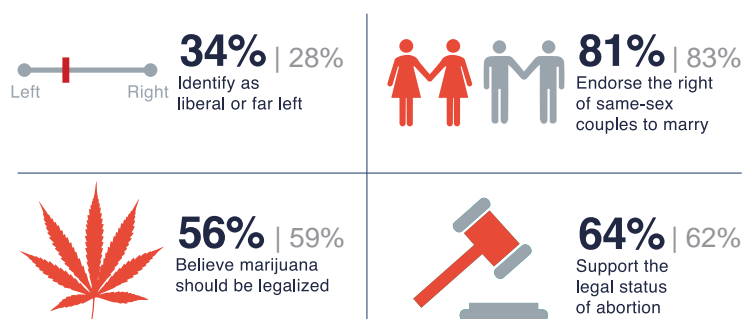
National results are shown in NAVY | University of Northern Colorado results are shown in GRAY

As this year's freshman class entered college, community issues and politics weighed heavily on their minds. With 2016 presidential campaigns beginning to gain steam, freshmen expressed their commitment to political engagement and their views on the political landscape.

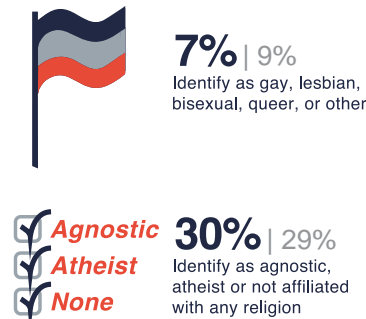
Freshmen are engaged politically and in their community.



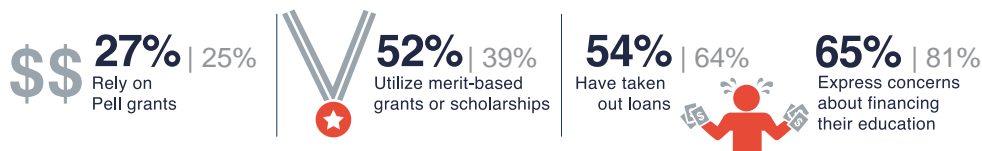
Which may relate to their stance on key social policy issues.



While their notions of diversity continue to expand.



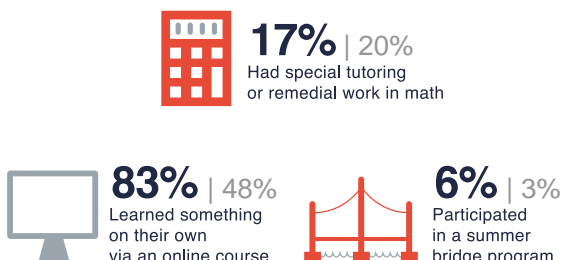
Students use a variety of sources to fund their first year of college.



Many students' college choice was influenced by graduates' success



Students rely on multiple sources to supplement their learning...



...And are open to additional support while in college.



Information about students entering college helps enrollment planning, retention efforts, and provides a baseline for understanding college effectiveness. Register for the CIRP Freshman Survey at www.cirpsurveys.org. The 2015 CIRP Freshman Survey report is available as a free download at www.heri.ucla.edu/tfsPublications

Survey Source: CIRP Freshman Survey 2015 www.heri.ucla.edu

[facebook.com/HERI.CIRP](https://www.facebook.com/HERI.CIRP)

[@HERIUCLA](https://twitter.com/HERIUCLA)