

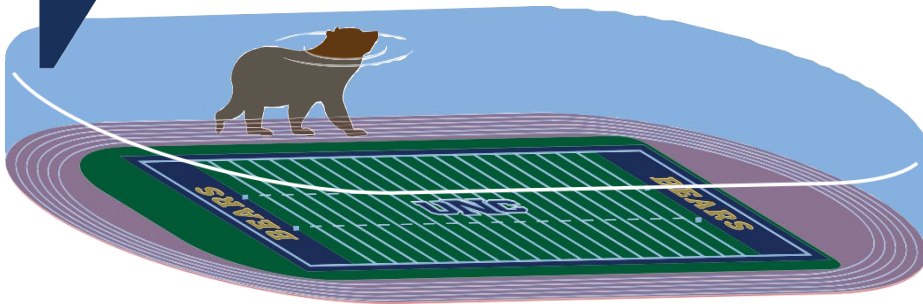
UNC Landscape Water Resiliency Plan

Why Water Resiliency?

Campus is 260 acres, including over 90 acres of lawns. The amount of water to sustain our lawns amounts to 79,200,000 gallons! That's enough to cover Nottingham Field in nearly

81 FEET OF WATER

As 40% of UNC's water comes from the stressed Colorado River, water resiliency means planning smarter, using less, and creating a sustainable campus for everyone.



Project Overview

This project will assess vegetation, irrigation systems, and water use to develop practical strategies for conservation, sustainability, and cost savings.



ADVANCE WATER STEWARDSHIP



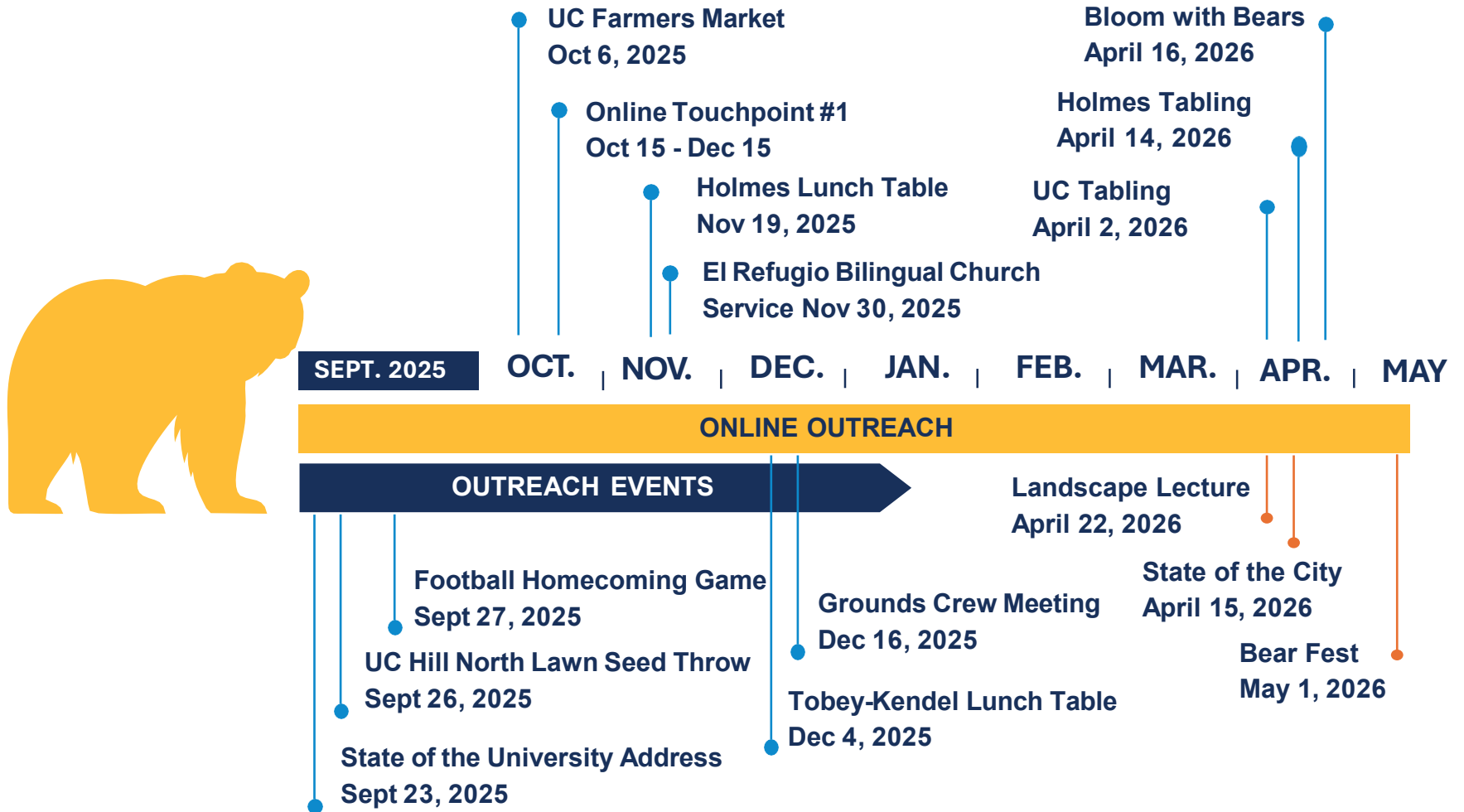
STRENGTHEN CAMPUS & COMMUNITY PARTNERSHIPS



DELIVER A LONG-TERM ROADMAP

Outreach Timeline

We have attended & participated in many outreach events during our assessment to learn what's best for UNC's campus & students.

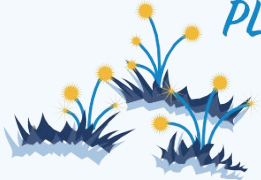


LANDSCAPES FOUND MOST APPEALING



69%

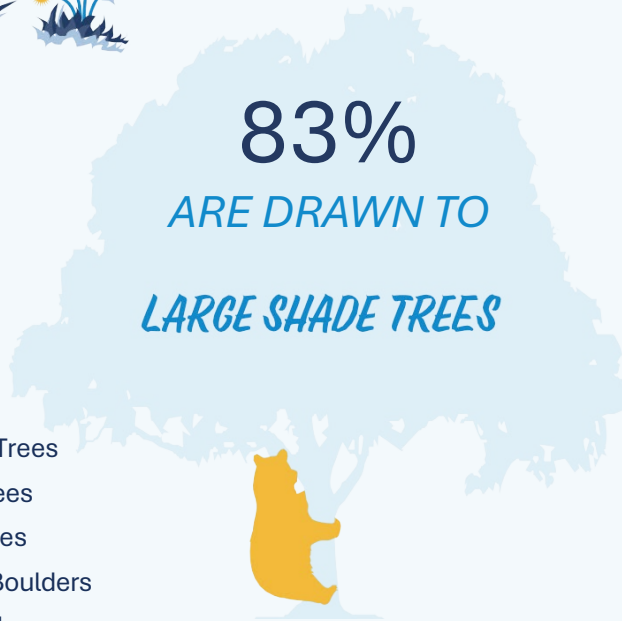
*LOVE FLOWERING
PLANTS OF ALL KINDS*



83%

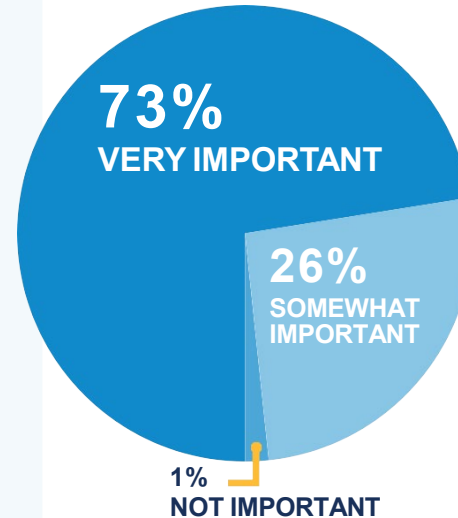
ARE DRAWN TO

LARGE SHADE TREES



- 52% Ornamental Trees
- 32% Evergreen Trees
- 27% Prairie Grasses
- 20% Landscape Boulders
- 7% Hardscape/Plazas

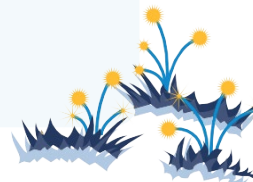
HOW IMPORTANT IS WATER CONSERVATION?



and as part of that, nearly

80%

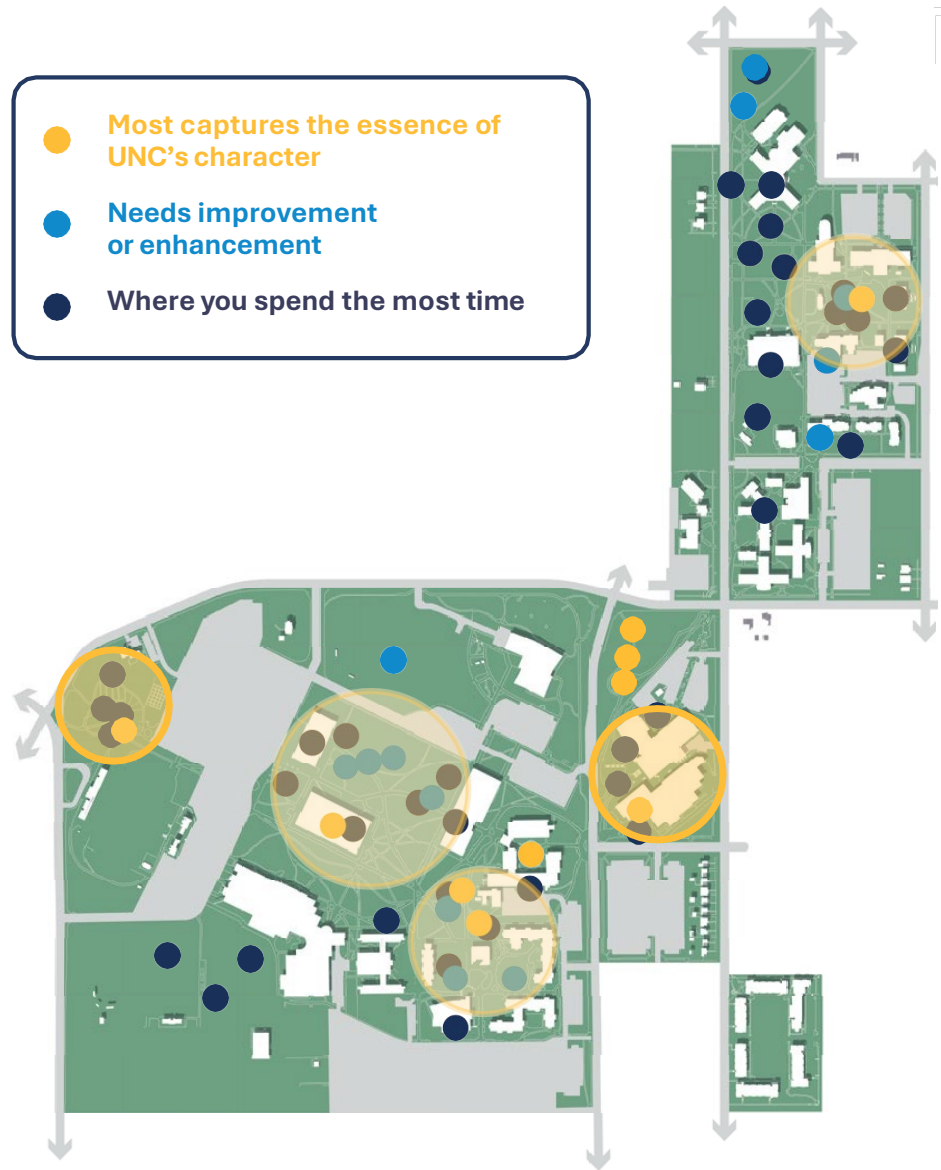
**are very supportive
of water conservation
efforts on campus**



Location Specific Feedback

- Overlapping indications of high use, high importance and need for improvements
- Clarifies how water resiliency effort may affect the campus community
- Helps identify priority improvement areas

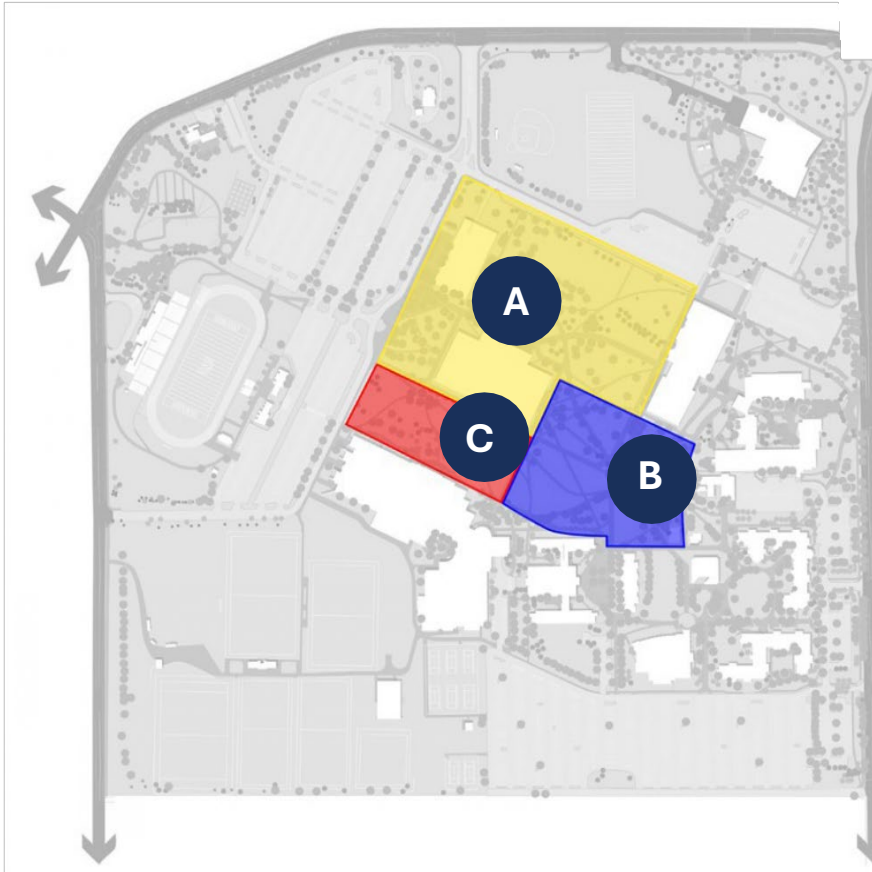
- Most captures the essence of UNC's character
- Needs improvement or enhancement
- Where you spend the most time



HIGHLIGHTS:

- Improve west campus asphalt paths
- Central campus character
- Preserve existing mature trees
- Like the planting beds south of Michener
- Really enjoy Xeric Community Garden near Nottingham
- Love Gunter Green
- Need more non-paved pathways

Identified Opportunity Areas



Opportunity Types



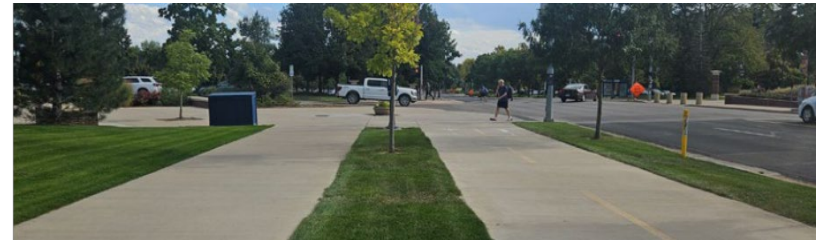
FOUNDATION PLANTINGS



STORMWATER AREAS



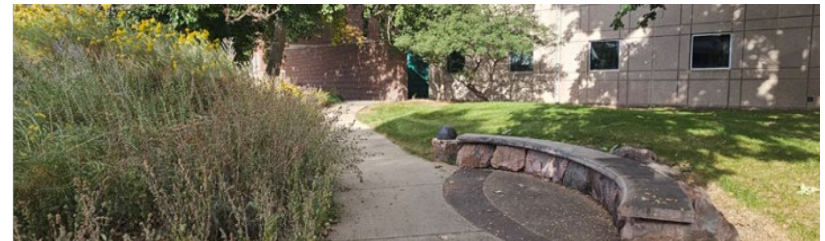
LARGE NON-FUNCTIONAL
TURF AREAS



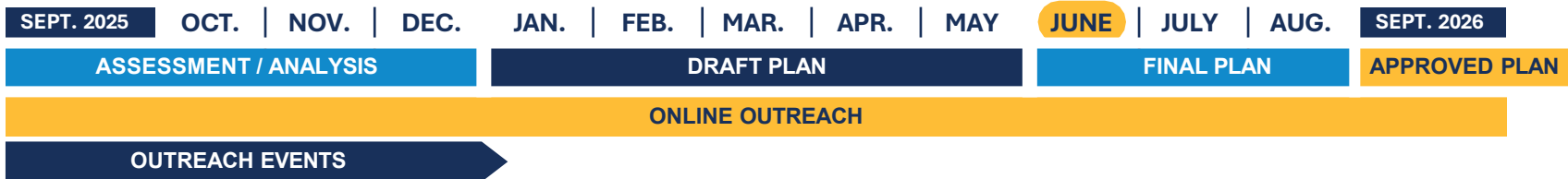
THIN TURF BANDS



SMALL TURF PATCHES



EDGE CONDITIONS



PROJECT TASKS COMPLETED TO DATE

- Campus-wide analysis & assessment
- Outreach across students, faculty, staff and the larger Greeley community
- Support gained for the larger project vision and goals of reducing water consumption and alignment with the Rowing Not Drifting Strategic Plan

REMAINING PROJECT TASKS

- Finalize draft plan and recommendations
- Present draft plan for review
- Develop schematic design plans for priority areas
- **Provide final plan for approval**

FUTURE TASKS & IMPLEMENTATION

- Integrate priority improvements with capital budgets, grants and funding opportunities
- Provide staff and on-going funding for small-scale project implementation by UNC
- Budget for on-going maintenance of existing and renovated landscapes
- Bid out larger improvements and renovation projects with local contractors

You can continue to support this project by providing feedback & Communicating this story!

Thank You!