

C. S. C. E. SONGS

Sing Ho!

Sing Ho! for our college,
Sing Ho! for our crew.
Sing Ho! for our fighting
bears
We give our pledge to you
Our children are faithful
Our team fair to see,
So give a yell—
And fight like hell!
For C. S. C.

Alma Mater

Ah! Well! I remember;
Friends of purple and gold
Friends met in September
Pledging their faith to hold.
Gone friends of September,
Gone dear friends of old,
Time never shall sever,
Friends of purple and gold
Time never shall sever
Friends of purple and gold.

C. S. C. E. YELLS

C. S. C. E.

C !!!!!
C!—S!—C!—E!
Colorado
C—O—L—O—R—A—D—O
Colorado
State! State! State!

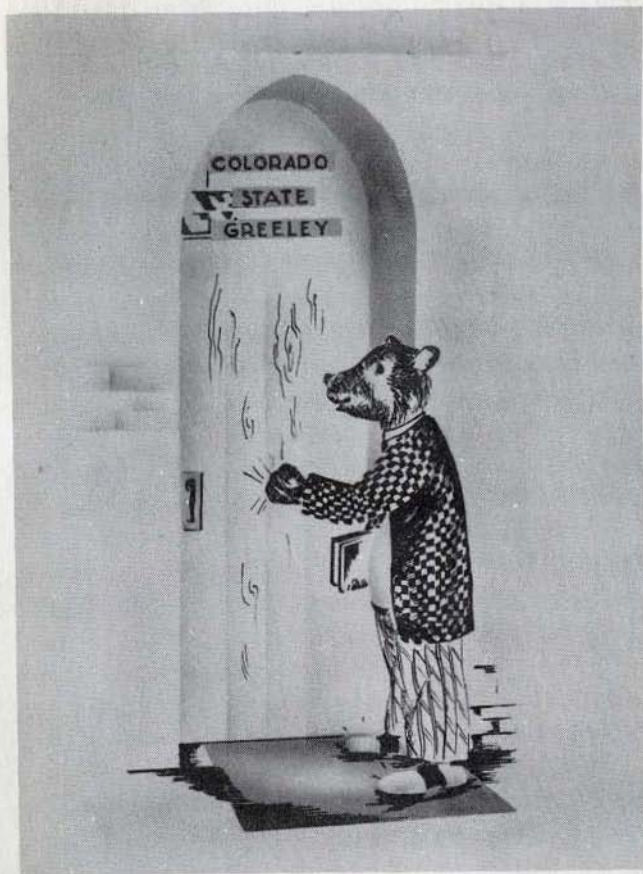
Colorado

C-o-l-o-r-a-d-a
C-o-l-o-r-a-d-a
C-O-L-R-A-D-O
Colorado! Colorado! State!

Greeley Locomotive

G-r-e-e-l-e-y
G-r-e-e-l-e-y
G-R-E-E-L-E-Y
Greeley! Greeley State!

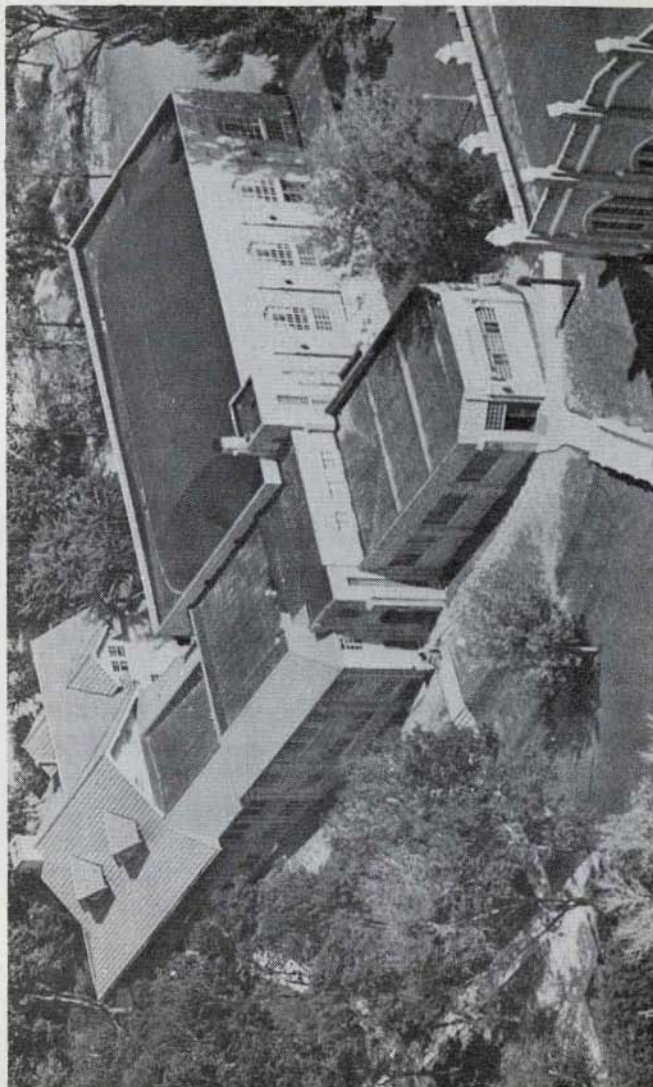
Yea! Greeley
Yea! State
Yea Yea! Greeley State!



Howdy Frosh

We wish to thank all those who have contributed time and information in the publishing of this handbook.

The Editors.



STUDENT UNION

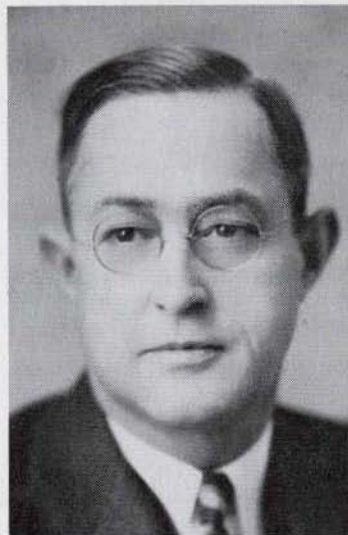
It is a pleasure to welcome you to Colorado State College of Education.

These are trying times. These are times when education is more important than it has ever been before. I congratulate you on your decision to attend college this fall. It is the very best thing you can do. When this war is over, the college men and women are going to hold the important positions, and those who have neglected college to earn inflated wages will be left behind.

I wish you all the success and happiness in your work at this college.

Cordially yours,

G. W. FRASIER, President.



TO THE FRESHMEN:

We welcome you as new students to our campus and trust that you will be able to make the proper adjustments in passing from high school to college. You are starting upon a somewhat new journey which calls for more self-direction, self-control, and initiative than you have perhaps ever needed before. More will be expected of you as a student in college than when you were in high school. My sincere wish for you is that you will not disappoint yourself nor your parents.

Sincerely yours

W. D. ARMENTROUT
Vice-President

HISTORICAL SKETCH

Colorado State College of Education had its very earliest beginning in the fall of 1888 when a number of interested citizens took up the matter of establishing a State Normal School at Greeley. After informal meetings a committee was appointed to cooperate with Senator McCreery in drafting a bill and securing favorable action from the state government. Mr. Cranford of New York City donated a greater part of the land for the institution and the "Normal School Building Association" directed by outstanding citizens of Colorado raised the necessary amount of money for the first building; Cranford Hall. The corner stone was laid June 13, 1890 at the northeast corner of the east wing of the administration building.

Mr. Thomas Gray was the first president. The first class was composed of twelve students. President Gary resigned at the end of the first year. Each succeeding year showed constant growth. Gradually the faculty doubled in numbers, and the physical growth of the campus was significant.

At the beginning of the second year Dr. Z. X. Snyder was chosen to succeed Mr. Gray as president. There was a reorganization of the college at this time, which extended the two year course to four years. In 1897 the admission to the college was restricted to those who were high school graduates thus establishing a professional college.

In 1915 Dr. Snyder died, and Dr. John G. Crabbe was elected president. During intervals Professor Hays served as president in the absence of Dr. Crabbe, and was in close contact with the development of the college for a period of about thirty years. It was Professor Hays who started the now traditional "Hays Picnic" Thirty-one years ago. It was at his suggestion also that the first homecoming day was held in 1923. Professor Hays died in 1924.

In 1924 Dr. George Willard Frasier was elected president, and has served to this date.

This is the beginning of the fifty-third year for the Colorado State College of Education. In the past fifty-two years it has established a record to be proud of. It ranks nationally as a training school for both under-graduate and graduate students in the field of education. We are looking forward to, and expecting bigger and better things of C.S.C.E. in the years to come.

As a student of Colorado State College of Education you are respected for being an individual, which carries with it many more responsibilities on your part than if you were merely a member of a crowd. We want to enjoy with you your successes, and to have always ready a place where you may come if you feel a little extra help is appropriate.

You are our first large entering class since the United States fully entered the war. Classmates who would have been here to greet you are scattered from Iceland to Australia doing their part in the armed services of our country. Your responsibility as a student now is to do the job here with distinction. We are glad that you are a member of our student body.

S. L. CRAWLEY,
Director Dept. Student Personnel



We are all very glad to welcome the freshmen to Colorado State College of Education. We hope that college will mean a fulfillment of all that you have dreamed it would be. May it be rich in friendship, stimulating to your thinking, and full of fun and zest.

We, in the Department of Student Personnel, are eager to know you and to help you in any way that we can. We hope that you will come to see us often.

DR. GRACE WILSON,
Dean of Women



BUILDINGS

The Conservatory of Music (built in 1904) was formerly the president's home, but it is well suited for its new function, now containing studios, practice-rooms, and one large recital room.

Crabbe Hall (1919) houses classrooms and laboratories of the Division of Home Arts and the Division of Language and Literature.

Cranford Hall (1890) is the main building and has in it the executive offices, classrooms, and the Museum of Natural History.

The Dormitories for men, Hadden Hall and Hays Hall provide comfortable living quarters for sixty-nine men. Hays Hall has a dining room where men in both halls are served. Women living in the six women's halls, Sabin Hall, Snyder Hall, Gordon Hall, Belford Hall, Decker Hall, and Tobey-Kendel hall are served in the spacious dining rooms of Tobey-Kendel.

The Faculty Club (1930) contains apartments for faculty members, large and small dining rooms, banquet room, a large attractive lounge where many social affairs take place, a library, and game rooms.

The Garden Theater (1940) was built partly by Associated Students funds for the purpose of conducting comfortable outdoor band concerts, and commencement exercises.

Guggenheim Hall of Industrial Arts (1912) houses the Division of Industrial and Fine Arts. It is a gift to the college from Senator Guggenheim.

Gunter Hall of Health (1927) houses all activities of the Division of Health and Physical Education. One large gymnasium accommodates 4000 spectators, and a smaller gymnasium is provided for the exclusive use of women students. It has a large swimming pool, a wrestling room, apparatus for gymnastics and matwork, locker rooms and showers, classrooms, and offices for the division staff.

Jackson Field (1926) a large turf football field is the scene of exciting football games, track meets. It has a stadium, cinder track, and fields for baseball and softball.

Kepner Hall (1912 and 1924) provides a training school center comparable in every way with any building in the United States devoted to a similar purpose. It houses the C.S.C.E. High School, the Ernest Horn Elementary School.

The Library (1939) comprises three units. The main floor has a well-lighted reading room. The central unit is devoted to stacks and small reading rooms. The north unit houses a main floor reading room for 250 people and a second "deck floor" for 100 persons.

President's Home (1928) is located on the corner of Tenth Avenue and Nineteenth Street. It is beautiful in architecture and adds to the beauty of our campus.

The Student Union (1939) is the center of all undergraduate extra-curricular activities—social, organizational and professional. It was built to serve students by giving recreational facilities to every student on the campus.

Home Economics Cottage (1920) is a laboratory for home economics students, where they learn in a natural environment.

STUDENT GOVERNMENT

The students enrolled at Colorado State College of Education comprise a united association which offers numerous and varied activities through which students may exercise their energies and abilities in student government and its various jobs. The student council, composed of the association officers, the presidents of all of the classes, one freshman representative and nine upper-class representatives, is the governing body of the association. This group meets one evening each week in the council room of the Student Union to transact business relative to contemporary problems and projects pertinent to the well-being and advancement of the student activities on the campus. The handling of the Associated Students fees is one of the most important jobs undertaken by the council. Other business handled pertains to the purchase and upkeep of equipment, formulating and enforcing regulations concerning organizations and their activities, developing student standards, and carrying on a large volume of routine business.

The opportunities offered through Student Government are so extensive and varied that every student interest is provided for in some measure. A great many students are needed to serve on and act as chairman on such committees as Homecoming, Curriculum, Elections, Intercollegiate Relations, Hays Picnic, and many other standing committees and numerous special ones.

ACTIVITY TICKET

The activity ticket you get when you pay your Associated Student fee is your passport to campus life. Upon presentation of this ticket the bearer is admitted to many of the activities on the campus. One of the outstanding benefits offered is the Artist Series. Each year through the resources of the Associated Students a number of outstanding attractions are brought to the campus.

Students will be admitted to all athletic events; football, basketball, track, etc., upon presentation of their Student Activity ticket.

Each week on specified evenings a social hour of dancing is held for the students' enjoyment. Every Friday the official student body newspaper, **The Mirror**, is made available to each student. All students who have paid their fees for fall, winter and spring quarters are entitled to a copy of **Cache La Poudre**, the school year book.

STUDENT HEALTH PROGRAM

Another service, offered to all by the Associated Students, is the health program. This program guarantees medical care for those in any need of treatment. Listed on the certificate of health are the Greeley physicians, any of which may be called upon to provide the treatments as specified. Members may also receive for three days per quarter, free hospitalization in the Greeley hospital.

A campus health center for the medical curement of minor ailments is in Cranford Hall and is located in the Student Personnel Department. A graduate nurse is on duty full time; doctors are available by appointment.

STUDENT UNION

Most of the student activities on the campus take place in the Student Union. There are three large lounges throughout the building that are accessible to the students—The Panel, Balcony, and Lobby. These are used for various purposes.

The Panel lounge is located in the east wing of the building where all magazines, newspapers, and periodicals are located for your convenience. The Balcony lounge overlooks the ballroom and is equipped with lounges and radio. Smoking is not permitted in the Balcony lounge. The Lobby lounge is situated directly below the Balcony lounge off the ballroom, and is used for meetings, or "get-togethers" of any nature. The rumpus room is used to play billiards, table tennis, cards, chess, checkers, or reading, etc. The Book Store is the place to buy and sell used text books. School supplies are here for your convenience. The spacious ballroom is used by clubs and organizations, both on and off campus for dances of all kinds. It is very beautiful and has a wonderful floor for dancing. Bru-Inn catches the true western spirit in its decorations and service. Breakfast and lunch, as well as sandwiches and soda fountain service, may be had here. The campus motto is "Let's go Bru-Inn."

Dinners and banquets may be held in the Grotto which is located directly off the Lobby lounge.

The Student Union building is for the students of the Colorado State College of Education. If requested, you must show your activity card or otherwise establish your identification.

Come over and get acquainted with YOUR Student Union!

NEW STUDENTS WELCOME

It is always a pleasure to welcome new students to C.S.C.E. We are glad you are here as one of us. Now it is our hope that you will take part in all of our many college functions. We who are working in student activities want to get acquainted. Do come to the Student Union building often, take part in Student Government. You are now a member of The Associated Students, learn all its functions and interests.

Those of you who will leave college, before completing your work, for military service, we do want to keep in touch with you. We also hope you will come back to finish the job you are now starting. Good luck is our wish all the way.

R. PRICE HOPKINS,
Graduate Manager



WELCOME STUDENTS

We are very happy to have you join our student body. The Associated Students on this campus are very active and will need your help and ideas in their many projects. I take this time to invite you to visit Student Council any Tuesday at 8 p. m.

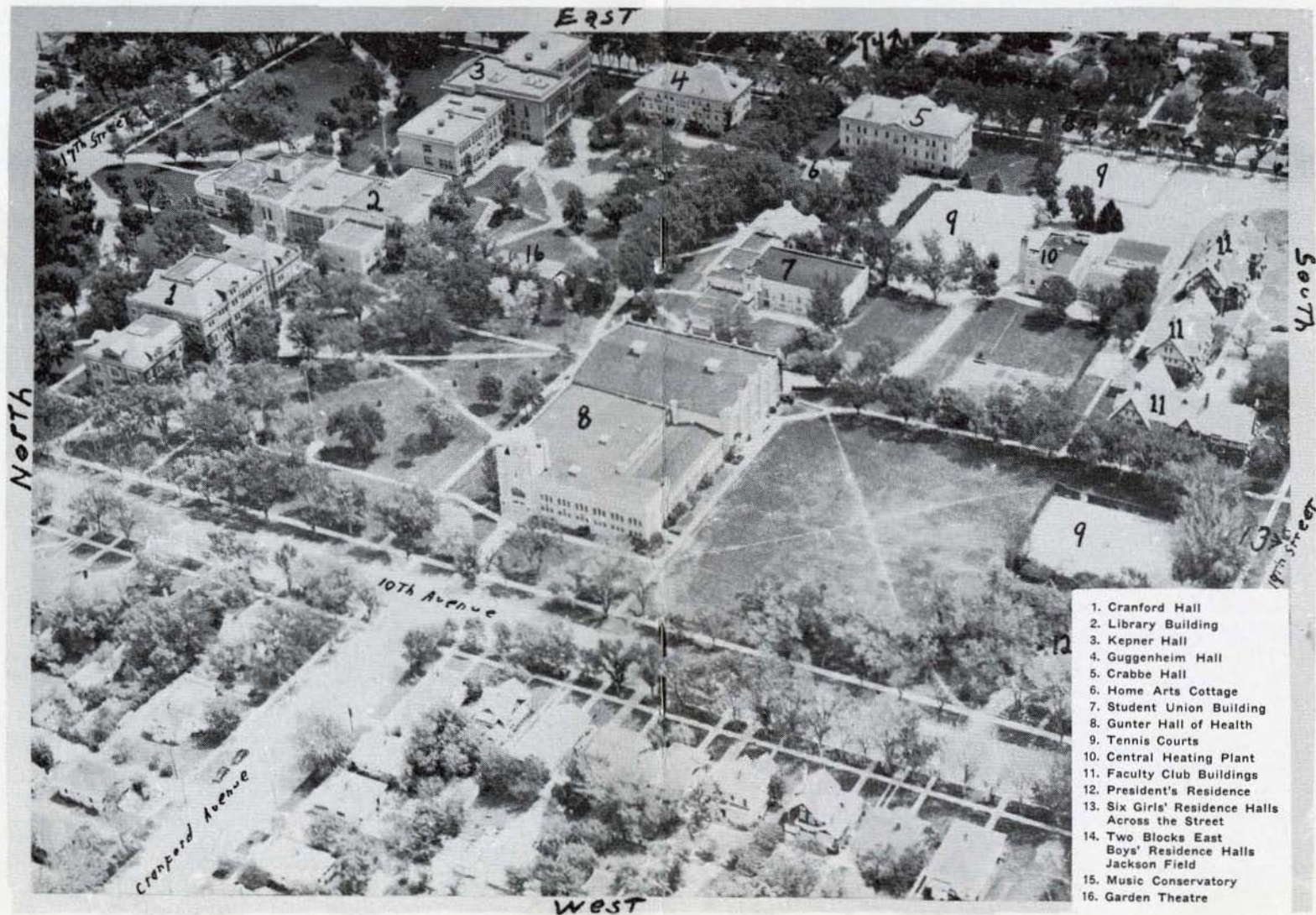
I hope Uncle Sam permits me to be with you this very interesting year.

Do come to my office in the Student Union any time with ideas. Again welcome to C.S.C.E.

AL ALBERICO
Student President



Campus of Colorado State College of Education



1. Cranford Hall
2. Library Building
3. Kepner Hall
4. Guggenheim Hall
5. Crabbe Hall
6. Home Arts Cottage
7. Student Union Building
8. Gunter Hall of Health
9. Tennis Courts
10. Central Heating Plant
11. Faculty Club Buildings
12. President's Residence
13. Six Girls' Residence Halls Across the Street
14. Two Blocks East Boys' Residence Halls Jackson Field
15. Music Conservatory
16. Garden Theatre

SOCIAL FRATERNITIES AND SORORITIES

There are seven social sororities, and four social fraternities on the campus. The main functions of these organizations are to promote social life of its members to the highest standard possible. Each Sorority is represented on the Panhellenic Council. The council regulates the activities of the Sororities, and settles any disputes that might arise between these organizations. The Fraternities are controlled by a similar council called the Inter-Fraternity Council. These are combined to form the All-Greek Council. This is a comparatively new organization starting its third year this year. Many problems have been solved and events sponsored that have proved the need for such an organization.

The Sororities and Fraternities, their address, phone, and president's name follow:

SORORITIES

Alpha Sigma Alpha - - - - Phone 338, 1731 11th Avenue
Delta Phi Omega - - - - - Phone 1685, 1732 11th Avenue
Delta Sigma Epsilon - - - - Phone 2000, Tobey-Kendel Hall
Pi Kappa Sigma - - - - - - - - Phone 2000, Sabin Hall
Sigma Sigma Sigma - - - - - Phone 993W, 1919 9th Avenue
Sigma Upsilon - - - - - - - - Phone 2573J, 1915 10th Avenue
Theta Sigma Upsilon - - - - - Phone 300M, 1509 9th Avenue

FRATERNITIES

American Commons Club - - Phone 2656W, 1827 11th Avenue
Delta Psi - - - - - - - - - - Phone 786, 1709 7th Avenue
Lambda Gamma Kappa - - - - - Phone 2286, 1615 11th Avenue
Phi Delta Pi - - - - - - - - - Phone 2288, 1609 11th Avenue

HONORARY FRATERNITIES

The membership in the Honorary Fraternities consists of the outstanding students on the campus in their chosen fields. Membership in all cases is limited to people above freshman rank. The fraternities and their purpose are as follows:

Alpha Delta National Journalistic Fraternity. To award outstanding journalists and encouraging participation in journalism.

Alpha Psi Omega National Dramatic Fraternity. To develop and cultivate the best in drama.

Delta Omicron National Musical Fraternity. To create and foster fellowship among women during their student days.

Kappa Delta Pi National Educational Fraternity. To recognize outstanding achievement and contributions to education.

Kappa Kappa Psi National Music Fraternity. To promote friendship between college bands and bandsmen.

Lambda Sigma Tau National Science Fraternity. To promote friendship and professional interest in science.

Phi Alpha Theta National History Fraternity. To further the academic and professional in history.

Phi Delta Kappa Professional Education Fraternity. To promote the interest of free public education in the United States.

Phi Epsilon Phi National Pep Fraternity. To unite eligible men for leadership in promoting school loyalty in spirit and action.

Phi Mu Alpha Sinfonia National Music Fraternity. To advance the cause of Music in America.

Pi Lambda Theta National Educational Fraternity for women. The foster professional spirit and the highest standards of scholarship in the field of education.

Phi Sigma Iota National Romance Language Fraternity. To recognize outstanding ability in romance language and literature.

Pi Kappa Delta National Debate Fraternity. To encourage discussion and debate on the campus.

Pi Omega Pi National Business Education Fraternity. To foster and promote the field of business education.

Math Club For stimulating interest in mathematical problems.

Modern Dance Club To promote interest in modern dancing as an activity for the individual.

Quisiamovir To further interest in foreign language.

Religious Council To bring together the student religious organizations of the campus.

Science Club To develop interest in current science happenings.

Sigma Eta Chi For women students interested in the Congregational Christian Church.

Tharsay Girl's pep organization.

Tri "C" To bring Rural Education majors together.

Women's Athletic Association To promote a sportsmanlike attitude among women students.

Associate Women Students To enrich the lives of women students through college activities.

Young People's Fellowship Club To provide Christian fellowship for those interested.

THE RELIGIOUS COUNCIL

The purpose of the religious council on the campus is to bind together the student religious organizations in a common endeavor to seek the christian way of life, to share with others the best we find in this way of life and to live up to our highest ideals.

It is composed of two representatives of every church with student members in the congregation. They sponsor religious assemblies at the proper times during the school year, a "go to church Sunday" once each quarter, etc. They also visit sick students in the college ward at the hospital. Every religious activity on the campus in the name of the school is sponsored by the religious council. The churches of Greeley welcome you and want you to participate in their activities. These churches, their address and pastor's name are as follows:

Baptist Church, First: 10 Ave. and 11th St., Rev. E. Woody Hodson, 2107 9th Ave.

Baptist, Bethel: 8th Ave. and 16th St., Rev. Pankey.

Catholic, St. Peters: 9th Ave. and 12th St., Rev. B. J. Froegel, F.V., 1125 9th Ave.

Chapel of Christian Alliance, 1031 13th Ave.

Christian, First: 8th Ave. and 13th St., Rev. Clifford I. Cecil, 2033 8th Ave.

Christian Science: 8th Ave. and 14th St.

Church of God: 3rd Ave. and 12th St.

Congregational, Park: 8th St. and 10th Ave., Rev. C. Fosberg Hughes, 1115 8th St.

Congregational, St. Paul's: 4th Ave. and 12th St., Rev. H. J. Stroh, 312 12th St.

Episcopal, Trinity: 11th St. and 9th Ave.

Evangelical, First: 12th St. and 12th Ave., Rev. H. A. Hagemeyer, 1207 12th Ave.

Evangelical, Free: 922 11th St., Rev. Levy Olson.

First Covenant Church: 11th Ave. and 10th St., Rev. Milton Swanson, 504 11th Ave.

Lutheran, Immanuel: 13th St. and 8th Ave., Rev. Reuben Carlsson, 1310 8th Ave.

Lutheran, Our Savior's English: 8th Ave. and 21st St., Rev. E. G. Fritschel, 2040 8th Ave.

Lutheran, St. John's Evangelical: 4th Ave. and 11th St., Rev. M. Schoenhaar.

Lutheran, Trinity: 7th Ave. and 16th St., Rev. F. W. Obermeier, 1405 7th Ave.

Methodist, First: 10th Ave. and 10th St., Rev. Everet Sabin.

Nazarene, Church of the: 9th St. and 11th Ave., Rev. C. B. Mylander, 1114 9th St.

Presbyterian, First: 14th St. and 9th Ave., Rev. Stuart M. Paterson, 1533 12th Ave.

Presbyterian, Reformed: 10th Ave. and 15th St., Rev. Owen F. Thompson, 1505 10th Ave.

Presbyterian, United: 8th St. and 11th Ave.

Salvation Army: 827 7th St.

Seventh Day Adventist: 9th St. and 13th Ave.

GREETINGS FROM — THE COACHES

The athletic department wishes to extend a sincere welcome to all Freshmen. Our athletic program is planned for the purpose of making it possible for everyone to participate in the type of athletics for which he has time and ability. We urge everyone to participate in the particular field of athletics which he feels is best suited to his or her needs and interests.

Throughout all college athletics we urge sportsmanship as a very vital part of our athletic program. We are sure that you will all join with us, to take a special pride in the sportsmanship of our college, as a spectator in the cheering section and as a participant in some branch of the athletic program, in order to extend and develop the spirit of sportsmanship within our own college and among other colleges.

Varsity Athletics

Colorado State College of Education entered the Rocky Mountain Conference in 1924. The conference now consists of the Colorado School of Mines, at Golden; Western State College, at Gunnison; Colorado College, at Colorado Springs; Montana State College, at Bozeman, Montana, and C.S.C.E.

Intra-Mural Athletics

There is a place for everyone in intra-mural athletics. The program includes touch football, tennis, badminton, basketball, boxing, wrestling, volleyball, ping pong, billiards, gymnastics, softball, track and horse shoes.

Although there is a healthy rivalry among fraternities and independent groups, special pains are taken to make the program one in which everyone may participate, and the emphasis is placed upon having a lot of fun. Not only do students obtain exercise and mental relaxation in intra-murals, but they have an opportunity to make many friends at the same time.

Women's Athletic Association Guide for Freshman and Transfer Girls

WAA welcomes you to Colorado State College of Education and may you have four of the best years of your life here. Glorious fun and worthwhile friendship are yours too, through the activities of WAA.

At 5 o'clock all of you are invited to come to the women's gymnasium at Gunter Hall where you may participate in the seasonal sport being sponsored at that time.

WAA has meetings semi-weekly to discuss politics, maintain contact with WAA activities in other colleges and promote a happy intramural program for the women on the CSCE campus.

Here's a special invitation to the Freshman and Transfer student's mixer sponsored by the WAA on OCTOBER 9, FRIDAY AT 7:30 IN THE WOMEN'S GYM. IN GUNTER HALL.

Don't miss our bulletin board in Gunter Hall or the WAA column in the weekly Mirror, for further dates of our activities.

ANNE KEARNEY, WAA President.

How to Become a Member

Tournaments in hockey, badminton, tennis, and volleyball are held in the fall, basketball and badminton in the winter, softball and tennis in the spring. Regular attendance on a team for two activities during any quarter and attendance at 75 per cent of the practice periods before the tournaments qualifies one for membership in WAA.

A "C" scholarship average is a requisite for membership. New members are admitted to WAA each quarter.

The initiation fee is \$1, half of which pays dues for the first quarter, and the remainder of which is applied as a down payment on the white sweater which WAA girls are entitled to wear.

After five quarters of active membership in WAA, girls receive their "G" which may be worn on the sweater. After nine quarters of active membership a gold pin bearing the WAA monogram is awarded each member.

Executive Board, WAA 1942-1943

President - - Anne Kearney	Historian - Margaret Gibson
Vice-President Lillian Caldwell	Publicity - - - Jean Fraser
Secretary - Mary Ann Meyers	Publicity - - - Ardyce Zeiler
Treasurer - - Virginia Rice	Social Secretary - - - -
Head of Sports - - - -	- - - - - Leona Schwant
- - - - Shirley Dickenson	- - - - - AWS Representative - - -
Social Chairman - Miriam Batt	- - - Martha Jo Freeman
Historian - - Sybil Grabski	

ARTIST SERIES

- Oct. 15—"The Great Virgil," Magician
 Oct. 30—Graff Ballet
 Jan. 18—Albert Spaulding, Violinist
 March—"Yankee Doodle Dandy of the U. S. A." A musical comedy road show out of New York.
 Activity ticket admits to all of these

1942 FOOTBALL SCHEDULE

- October 2*—Western State College at Greeley
 October 10—University of Wyoming at Laramie
 October 17—Colorado Mines at Golden
 October 24—Regis College at Denver
 October 31—Open
 November 6—Army Air Base, Colorado Springs
 November 14*—Colorado Aggies at Greeley
 November 21*—Colorado College at Greeley

*Activity Ticket admits to home games

1943 BASKETBALL SCHEDULE

- Jan. 8*—Montana State College at Greeley
 Jan. 9*—Montana State College at Greeley
 Jan. 15*—Colorado School of Mines at Greeley
 Jan. 16*—Colorado School of Mines at Greeley
 Jan. 22—Western State College at Gunnison
 Jan. 23—Western State College at Gunnison
 Jan. 29*—Colorado College at Greeley
 Feb. 5—Colorado School of Mines at Golden
 Feb. 6—Colorado School of Mines at Golden
 Feb. 12*—Denver University at Greeley
 Feb. 13—Denver University at Denver
 Feb. 20—Colorado College at Colorado Springs
 Feb. 26*—Western State College at Greeley
 Feb. 27*—Western State College at Greeley

Other Non-Conference Games to be added

*Activity Ticket admits to home games

INSTRUCTIONAL STAFF

Abbott, Urith	Cran. 104	Hoydar, Edna	Con. 7
Allbritten, Leo	Kepner 221	Hutchcroft, Cecil	Military Service
Anderson, Betsy R.	Kepner 124-207	Ireland, F. W.	On Leave
Armentrout, W. D.	Cran. 108	Irvin, George	Military Service
Armstrong, Lois	Kepner 120	Jean, Frank C.	Cran. 302
Baab, Clarence	On Leave	Kendel, Elizabeth	Kepner 222
Barker, George	Crabbe 307	Knies, W. L.	Cran. 111
Barnard, Darrell	Military Service	Langworthy, Helen	Kepner 209
Bedinger, S. C.	Cran. 211	Lehr, Elizabeth	Kepner 125
Bishop, Ralph T.	Kepner 4	Lindou, L. D.	Library 502
Blackburn, Margaret	Crabbe 309	Lytford, Genevieve	Kepner 108-13
Blough, Helen	Kepner 118	McCowan, Annie	Cran. 100
Bottinelli, M.	Cran. 100-109A	McKee, Paul	Kepner 201
Bowers, W. G.	Crabbe 101	Magnie, Bernice	Gugg. 103
Bradbury, Helen	Kepner 101	Mallory, A. C.	Cran. F
Butler, Louis C.	Gunter 106	Mariani, John	Gugg. 101
Campbell, Adele	Library 211	Melander, Carl	Con. 9
Campbell, Wayne	Military Service	Meyer, Florence	Kepner 216
Carney, Elizabeth	Kepner 210	Mohr, E. E.	Kepner 114
Carson, R. M.	Cran. 103	Moore, Donald L.	Military Service
Carter, Eugene	Gugg. 3	Mulroney, Margaret	Library 501
Cave, Jean	Gunter 109	Newburn, Vera	Crabbe 210
Chadwick, J. E.	Con. 2	Newcomb, Doris	Library 216
Clanfield, Mary	Kepner 217	Newman, Evelyn	Library 402
Clapp, Percy O.	Military Service	Peake, Ora B.	Cran. B
Cline, J. D.	Con. 1	Perry, Kenneth	Gugg. 101
Collins, Blanche	Kepner 114	Pogue, Pauline	Kepner 212
Colvin, A. O.	Cran. 209	Reynolds, Robert H.	Military Service
Congdon, Nora	Cran. 101B	Rosenquist, Lucy	Kepner 121
Crawley, S. L.	Cran. 101A	Ross, William	Cran. 105
Cross, Neal	Cran. 101A	Rugg, Earle U.	Library 305
Damon, G. E.	Cran. 211	Sanders, Juanita	Kepner 222
Davis, Helen C.	Kepner 208	Schoen, Adelgunda	Kepner 12 and Gugg. 103
Decker, Donald	On Leave	Scott, Elizabeth	Gunter 109
Dickerson, O. M.	Crabbe 307	Selberg, Edith	Kepner 2
Doubenmier, J. S.	Gunter Hall (basement)	Shaw, J. H.	Cran. 112
Edwards, Lon	Kepner 6	Shoemaker, Francis	Library 502
Ellinger, Richard G.	Gugg. 103	Steinmetz, Louise	Library 211
Ellis, Helen J.	Gunter 109	Toussaint, S. R.	Cran. 104
Farrar, Rose	Cran. 214	Troxel, O. L.	Cran. 114
Finn, James D.	Military Service	Turner, Floss Ann	Kepner 104
Frasier, G. W.	Cran. 108	Turner, Glen C.	Cran. 107
Gibert, Catherine	Crabbe Hall	von den Steinen, E.	Gunter Hall (basement)
Ginsburg, Henry	Con. 10	Wait, Wallace T.	Military Service
Glidden, Harley	Kepner 6	Ward, Douglas	Kepner 220
Gooden, Eulah E.	Library 211	Weiser, Adolph J.	Con. 4
Hales, Charles A.	Crabbe 307	West, Lee Roy	Crabbe 303
Halverson, Josephine	Library 208	Weibking, Edith G.	Snyder Hall
Hambrick, F. L.	Kepner 201	Wilson, Grace	Cran. 103A
Hancock, John	Gunter 106	Wilson, J. Marie	Crabbe 202
Harral, E. C.	Cran. 305	Woodard, Lucy	Gunter 109
Harrison, Lucile	Kepner 107	Wrinkle, William L.	Kepner 201
Hawes, Josephine	Library 402	Zahnen, Helena	Kepner 204
Hay, Leon R.	Military Service	Zimmerman, A. F.	On Leave
Heilman, J. E.	Cran. 101B		
Herman, Fred	Crabbe 107		
Hopkins, R. Price	Student Union		