

NOCTURNE

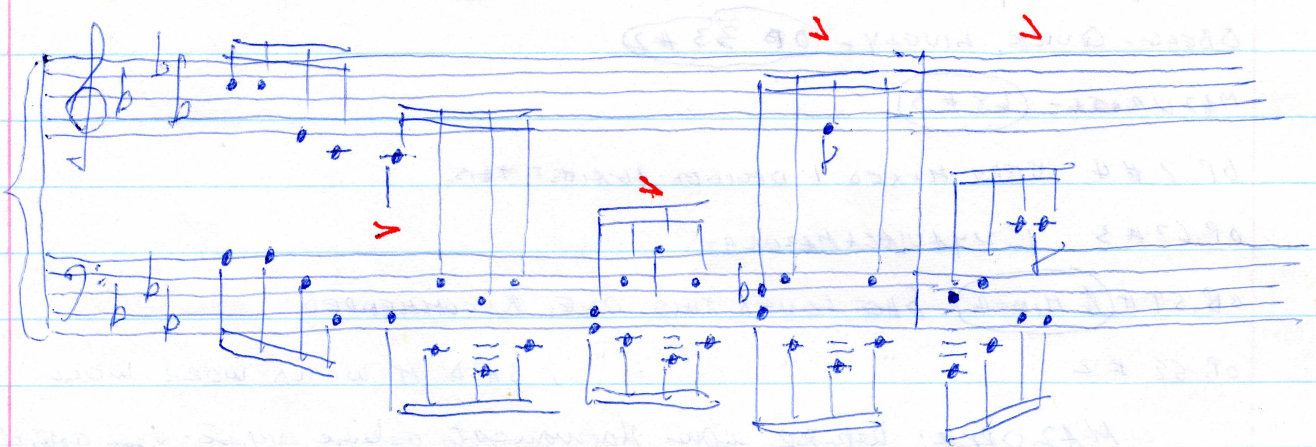
Great transition from C MINOR to C MAJOR. SOBTLE USE OF CHORDS.
LAST ECHO OF ETUDE #12 IN IMPLIED DEVELOPMENT.

PIANO, 1894

PLEYEL(?)

LYDIA GRZYBOWSKA

$C - \boxed{C B E \text{flat} C} - C B \text{flat} A \text{flat} E \text{flat} -$
 $B \text{flat} A \text{flat} F A \text{flat} -$



PAW TADEUSZ

Page 163 Trees

Page 198 old man hunting horn (BIG 134)

PAGE 129 MUSHROOMS (BIG 91)