

## Estes Park Colorado

Make plans to have your next outdoor classroom activity, company retreat, family reunion or weekend get-away in beautiful Estes Park, Colorado. Just an hours drive west of Greeley or 70 miles north west of Denver, Estes Park offers a variety of activities to suit every person including, hiking, fishing, golf, sightseeing, wildlife watching, galleries, shopping and a wide array of dining options. An entrance to Rocky Mountain National Park is only a few minutes west of downtown Estes Park.



*For information or to make your reservation, call or email:*

Housing & Residential Education  
Tobey-Kendel 199  
Greeley, CO 80639

Phone: 970-351-1984  
Fax: 970-351-1246  
E-mail: [deborah.thompson@unco.edu](mailto:deborah.thompson@unco.edu)

## *Old Man Mountain Retreat Center*

*1040 Old Ranger Drive*



UNIVERSITY of  
NORTHERN COLORADO



# Old Man Mountain Retreat Center

Old Man Mountain Retreat Center is a facility owned by the University of Northern Colorado and managed by the Department of Housing & Residential Education. This facility is located in beautiful Estes Park, Colorado, approximately an hours drive west of Greeley. This retreat center is available to rent for either academic, business or personal use and can comfortably accommodate up to 24 guests in the beds provided.

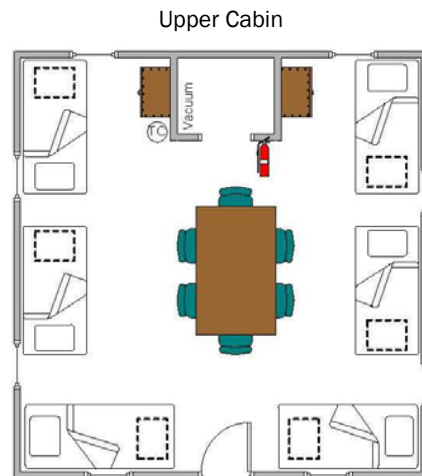
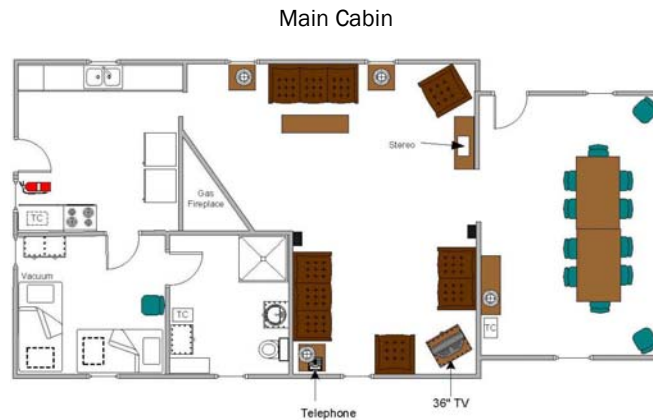
The Old Man Mountain Retreat Center consists of three living cabins and a shower house with separate restroom and shower areas for men and women. The main cabin sleeps 6 and includes a full kitchen, living room, conference room and bathroom. The Upper Cabin sleeps 12 in one large open room and the Lower Cabin consists of two rooms that sleep 6 persons. All beds in this facility are bunked, extra-long twins (39" x 80") with the exception of a queen hide-a-bed in the main cabin.



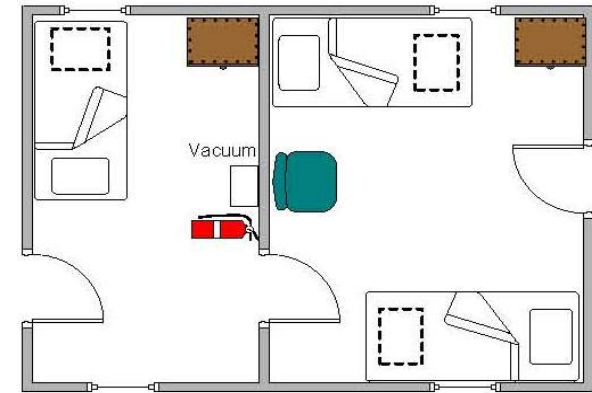
## Amenities

The Retreat Center offers many amenities to make your stay comfortable. The kitchen includes two full-size refrigerators, an electric stove, microwave, toaster and coffee maker. A limited supply of pans, utensils and dishes are provided. Additional amenities in the main cabin include a gas fireplace, DVD/VCR player and a satellite dish. An outdoor charcoal grill and fireplace are also available for use. Guests are responsible for furnishing their own bedding, towels and toiletries.

## Building Diagrams



Lower Cabin



## Rates

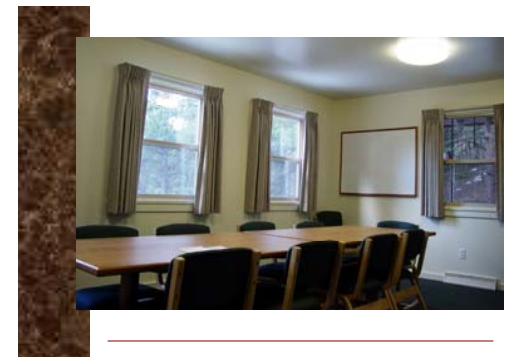
### UNC Member Rates:

Overnight Rate	\$185/night up to 10 persons; \$18.50/person after ten
Daily Rate (No Overnight Stay)	\$125/day (Monday-Thursday) (Excluding Holidays)

### Non-UNC Member Rates:

Overnight Rate	\$225/night up to 10 persons; \$22.50/person after ten
Daily Rate (No Overnight Stay)	\$125/day (Monday-Thursday) (Excluding Holidays)

Sales tax of 9.7% will be charged to guests unless a Sales Tax Exempt Certificate is provided at the time of your reservation.



Conference Room