

EXISTING LANDSCAPE CONDITIONS

TREES

- DECIDUOUS TREE
- EVERGREEN TREE

CAMPUS LAWNS

- ATHLETIC FIELDS
- ACTIVE LAWN AREA
- PASSIVE LAWN AREA
- SPECIAL GARDEN USE

CIRCULATION

- MAIN PEDESTRIAN
- SECONDARY PEDESTRIAN
- BICYCLE ROUTE
- MAJOR ARTERIAL STREETS
- ★ TRANSIT STOP
- MAJOR INTERSECTIONS

SPECIAL CAMPUS FEATURES

- ★ CAMPUS MONUMENTATION
- MAJOR BUILDING ENTRIES
- BUILDING COURTYARDS
- MAJOR DRAINAGE FACILITIES
- MAJOR SLOPE CONDITION

BUILDINGS

- ACADEMIC
- RESIDENTIAL

DESIGN & DEVELOPMENT ISSUES

OVERALL CAMPUS

- LACK OF CAMPUS UNITY
- DISCONNECTION BETWEEN CENTRAL & WEST CAMPUS
- UNORGANIZED PEDESTRIAN / BICYCLE CIRCULATION
- CAMPUS CENTER LACKS LEGIBILITY
- LIMITED MAINTENANCE CAPABILITIES
- LACK OF CAMPUS WAY-FINDING SYSTEM
- INEFFECTIVE DRAINAGE FACILITIES

CENTRAL CAMPUS

- LACK OF AMENITIES
- LACK OF FUNCTIONAL CAMPUS SPACES
- INCONSISTENT FURNISHINGS

WEST CAMPUS

- INCONSISTENT FURNISHINGS
- OVERSIZED AND UNSIGHTLY PARKING AREAS
- POORLY DEFINED PEDESTRIAN CORRIDORS
- LACK OF PEDESTRIAN SCALE TO CAMPUS SPACES
- WEAK RELATIONSHIP TO NEIGHBORING USES
- ATHLETIC FIELDS NOT INTEGRATED WITH CAMPUS



UNIVERSITY of NORTHERN COLORADO CAMPUS LANDSCAPE DEVELOPMENT PLAN

Prepared by
SHAPINS ASSOCIATES
PLANNING DESIGN & CONSTRUCTION

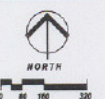


Figure 2a

EXISTING FEATURES

FLATWORK



CRANFORD PAVEMENT - COLORED CONCRETE



STONEWORK



BRICK - GRANITE



PATH LAYOUT



PEDESTRIAN PATHS - PAVERS

UNIVERSITY of NORTHERN COLORADO
CAMPUS LANDSCAPE DEVELOPMENT PLAN

Prepared by
SHAPINS ASSOCIATES
PLANNING DESIGN CONSTRUCTION



Figure 2b

EXISTING FEATURES

FURNISHINGS / LIGHTING



BENCHES • TABLES



TRASH RECEPTACLES



BIKE RACKS



PARKING LOT LIGHTING



PEDESTRIAN LIGHTING



PEDESTRIAN LIGHTING

UNIVERSITY of NORTHERN COLORADO
CAMPUS LANDSCAPE DEVELOPMENT PLAN

Prepared for:
SHAPINS ASSOCIATES
D. J. SHAPINS, P.E. (P) 970.491.1111



Figure 2c

EXISTING FEATURES LANDSCAPE



- Parking Lot Buffers
- Interesting Pedestrian Links
- Legible Landscape Pattern
- Memorable Monumentation
- Organized Plaza / Edges



CONTRIBUTING LANDSCAPES



- Lack Of Maintenance
- Erosion Issues
- Lack Of Concept
- Uninteresting Landscape
- Lack Of Parking Lot Buffer



NON-CONTRIBUTING LANDSCAPES

UNIVERSITY of NORTHERN COLORADO
CAMPUS LANDSCAPE DEVELOPMENT PLAN

Prepared by:
SHAPINS ASSOCIATES
PLANNING DESIGN CONSTRUCTION

Prepared for:
UNIVERSITY of NORTHERN COLORADO

Figure 2d

OPPORTUNITY AREAS



CAMPUS MONUMENTATION

POTENTIAL CAMPUS NODES



CAMPUS QUADS

DRAINAGE FEATURE

CAMPUS EDGE ENHANCEMENTS



PARKING LOT BUFFERS

PEDESTRIAN CONNECTION



MAIN PEDESTRIAN ROUTES



PEDESTRIAN CROSSROADS

MULTI-MODAL INTERSECTION

UNIVERSITY of NORTHERN COLORADO
CAMPUS LANDSCAPE DEVELOPMENT PLAN

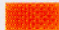

Prepared by
SHAPINS ASSOCIATES
PLANNING DESIGN GROUP LANDSCAPE ARCHITECTURE





Figure 2e

LANDSCAPE DEVELOPMENT FRAMEWORK




CAMPUS LANDSCAPE ZONES

-  CENTRAL CAMPUS
-  WEST CAMPUS



STREETSCAPES

-  CORE STREETSCAPES
-  SECONDARY STREETSCAPES

CAMPUS GATEWAYS

-  CEREMONIAL GATEWAYS
-  CORNER GATEWAY LANDSCAPE
-  CORNER/INTERSECTION IMPROVEMENTS

PARKING LOT CANOPY

-  FORMAL PARKING LOT CANOPY
-  DRAINAGE/CIRCULATION BUFFERS

PEDESTRIAN CROSSROADS and PLAZAS



QUADRANGLES



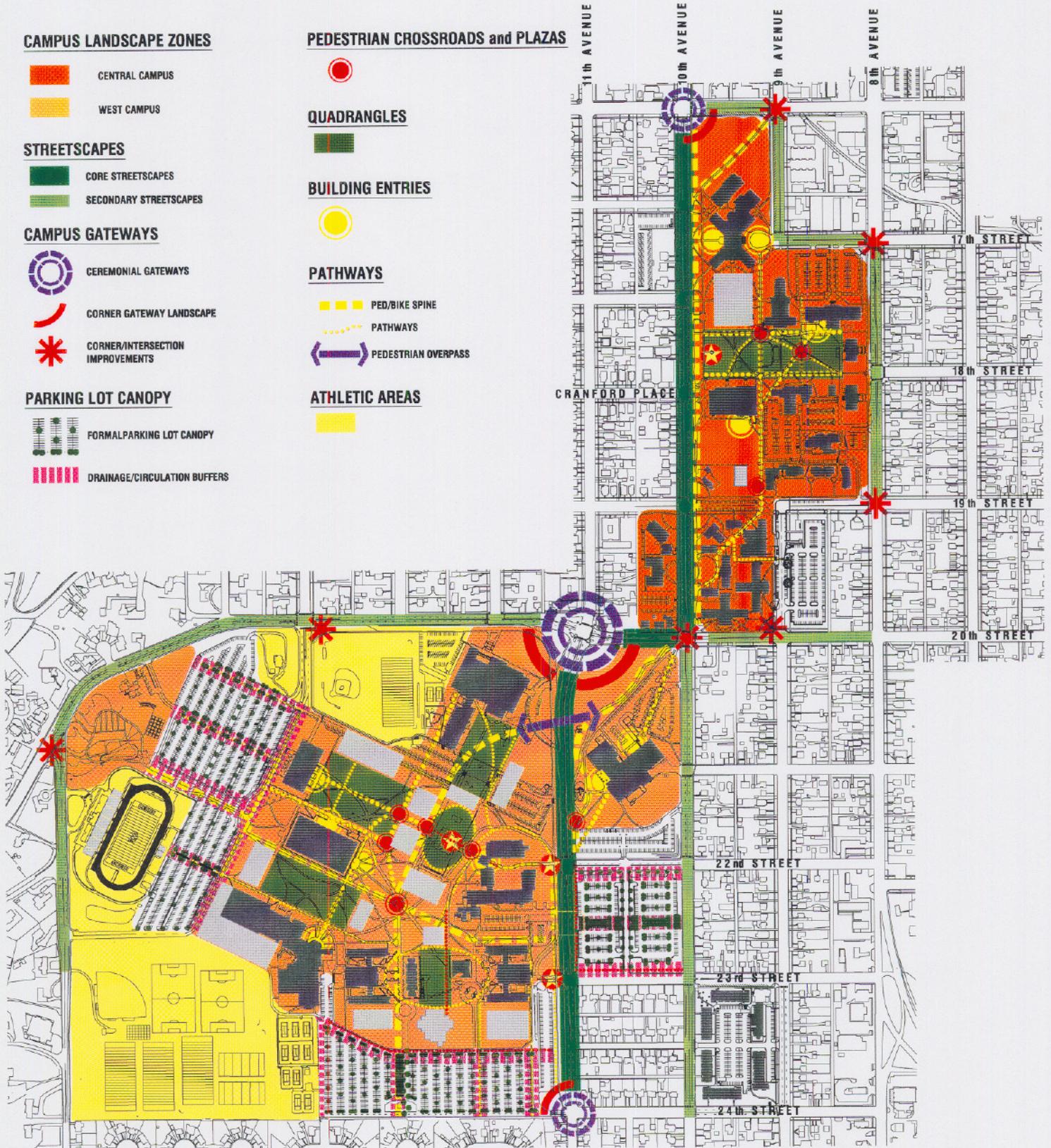
BUILDING ENTRIES



PATHWAYS

-  PED/BIKE SPINE
-  PATHWAYS
-  PEDESTRIAN OVERPASS

ATHLETIC AREAS



UNIVERSITY of NORTHERN COLORADO CAMPUS LANDSCAPE DEVELOPMENT PLAN

Prepared by
SHAPINS ASSOCIATES
PLANNING • DESIGN • LANDSCAPE ARCHITECTURE



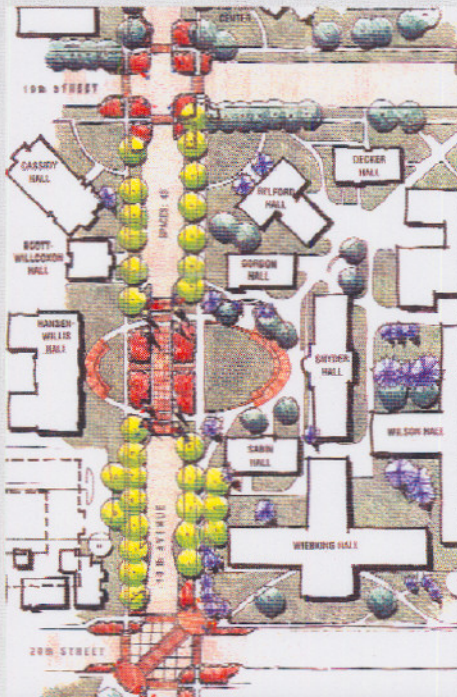
Figure 3a



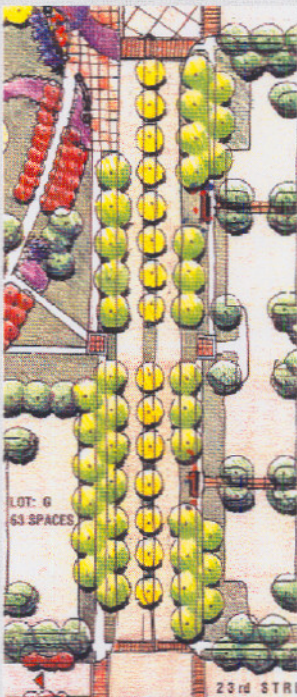
Low Water Use Streetscape



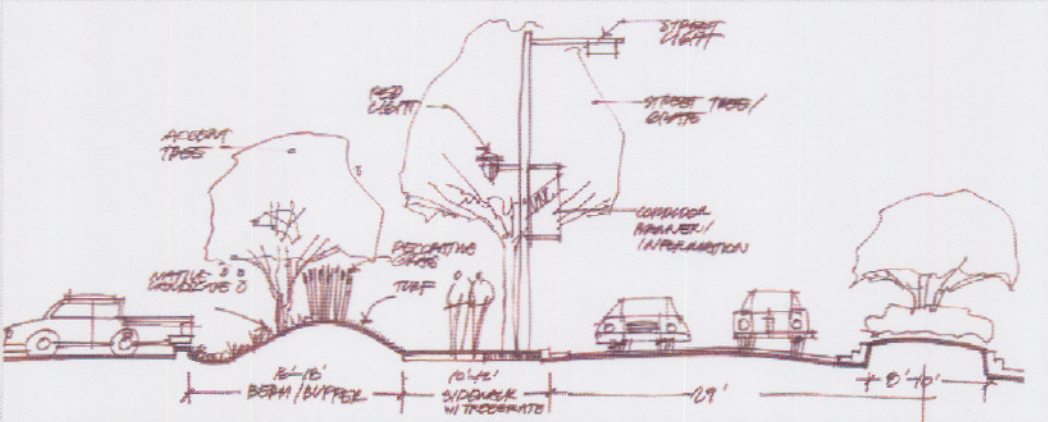
Pedestrian Oriented Streetscape Buffer



10th Avenue Streetscape Plan



11th Ave Streetscape Plan



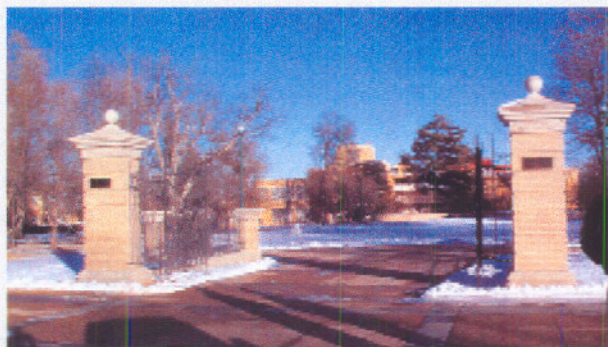
Typical Core Campus Streetscape Section

Figure 3b

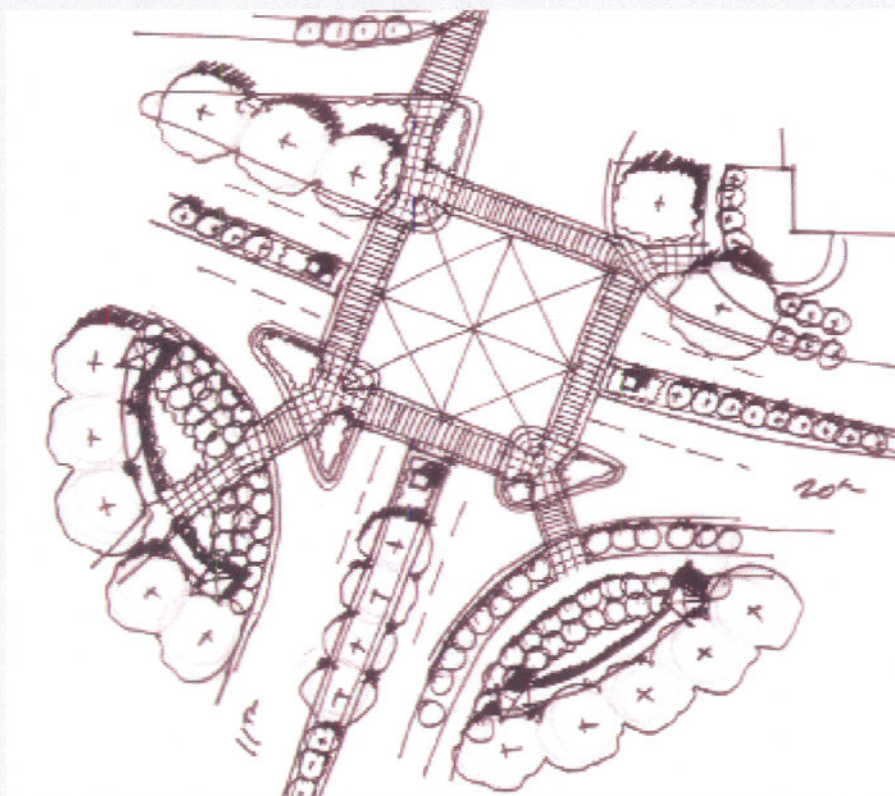
Streetscapes



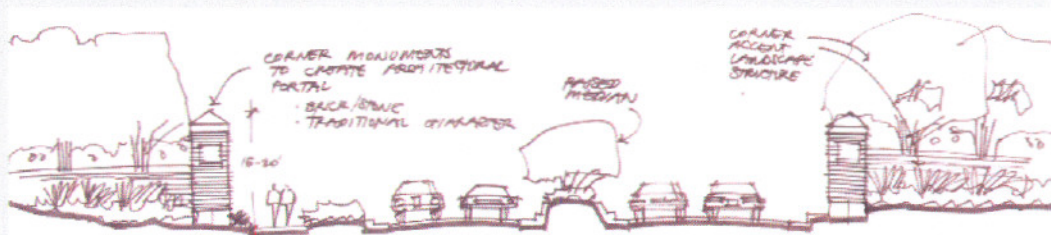
Large Scale Campus Gate



Modest Scale Campus Gate



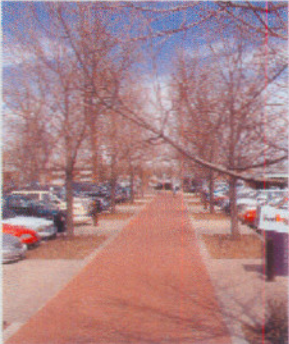
Campus Gateway Plan at 11th Avenue & 20th Street



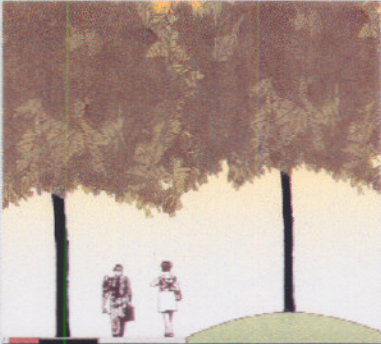
Typical Gateway Section at 11th Avenue & 20th Street

Figure 3c

Campus Gateways



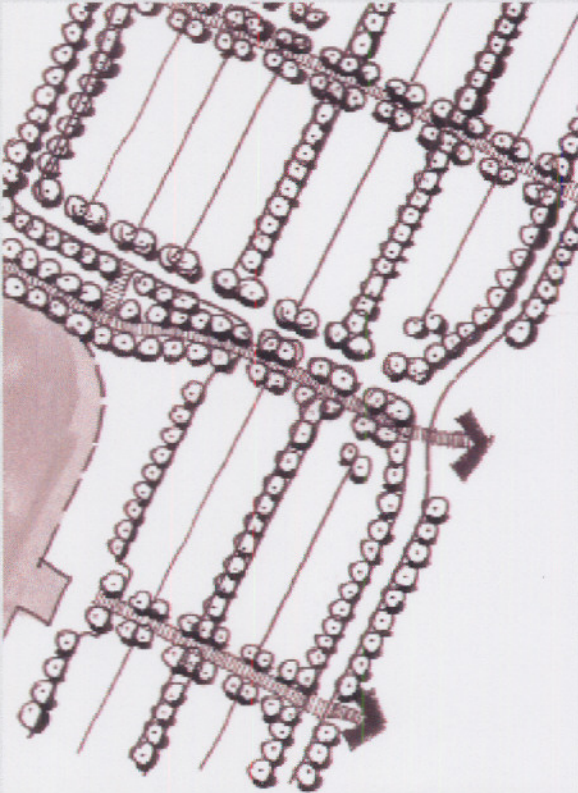
Ped Path Thru Lot



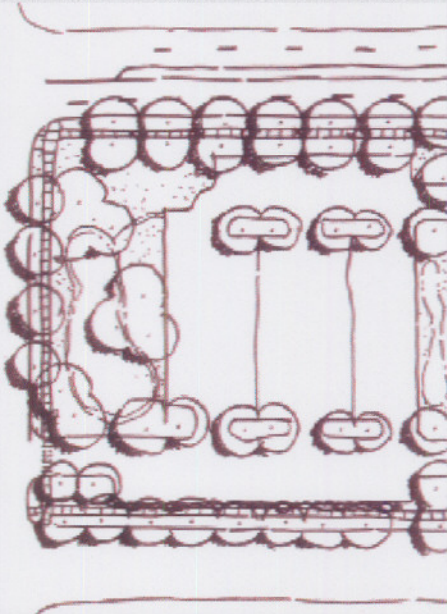
Parking Buffer- Berm



Parking Buffer- Plants



Parking Lot Tree Planting Plan



Typical Buffers in Parking Lot

Figure 3d

Parking Lot Canopy



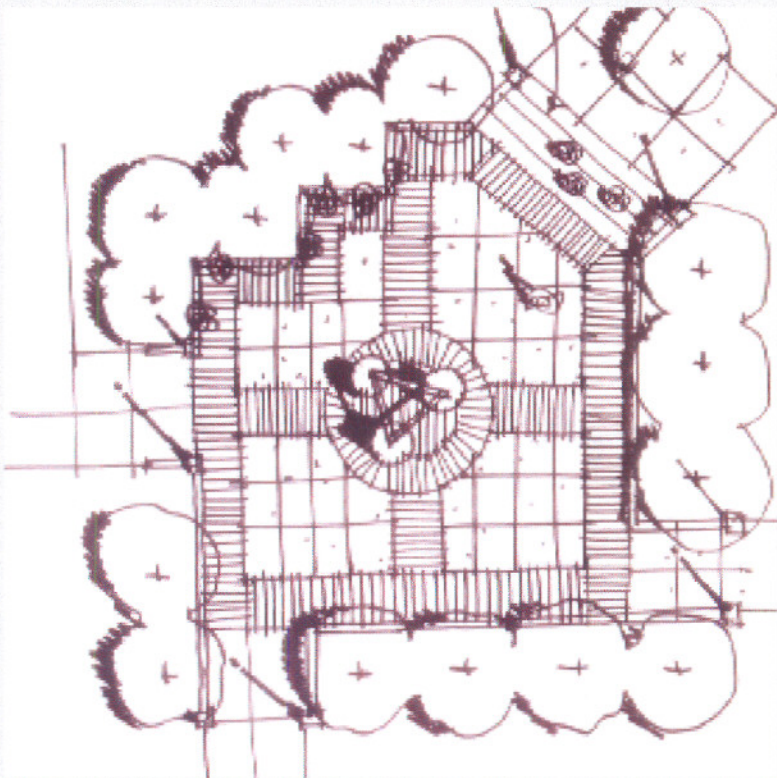
UNC Entry Plaza



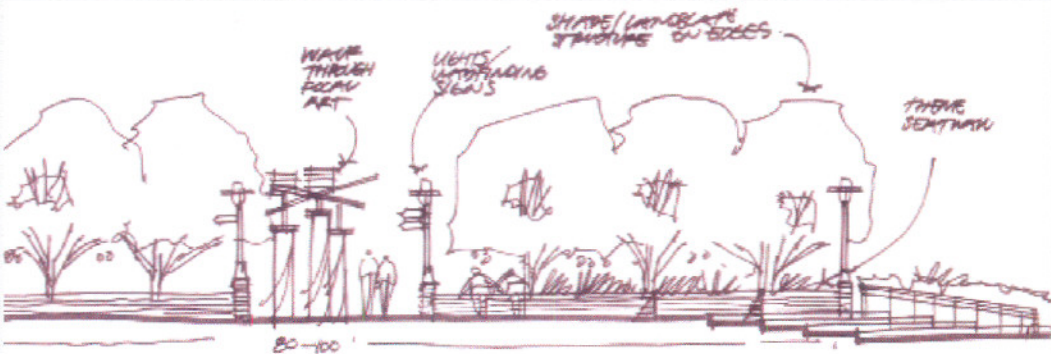
Campus Crossroads



Campus Plaza



Crossroads Plaza Plan

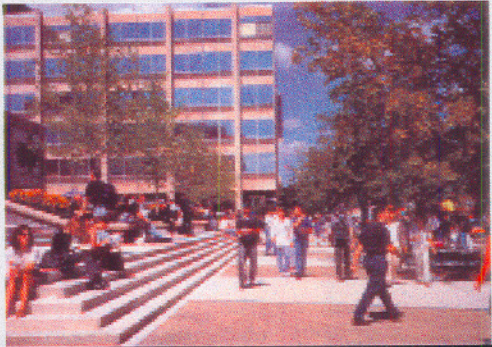


Typical Plaza Section

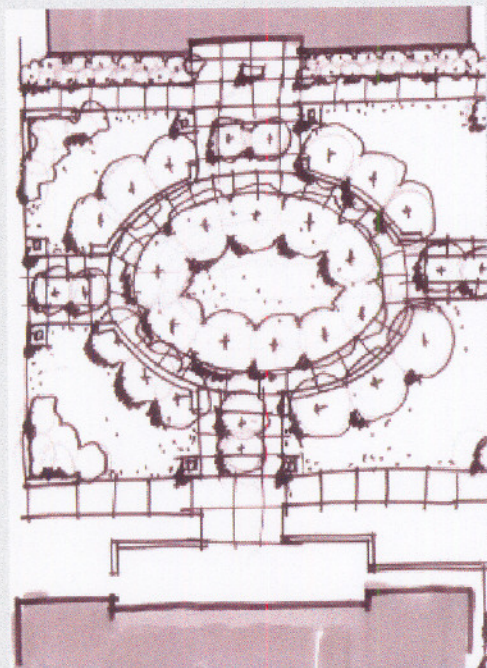
Figure 3e Pedestrian Crossroads & Plazas



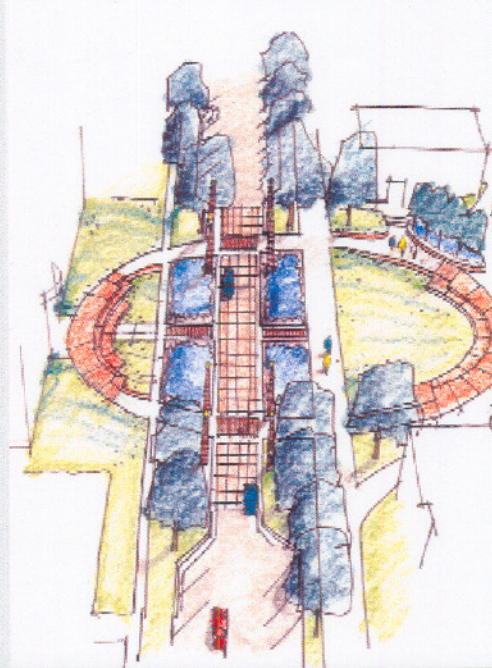
Quadrangle Edge /Ceremonial Entry



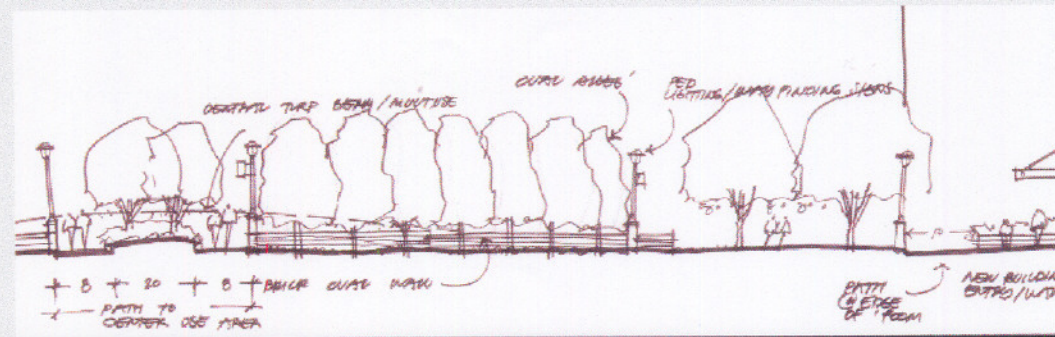
Quadrangle Edge/Stairway Seating



Typical Quadrangle Plan View



Residence Hall Quadrangle Concept



Typical Quadrangle Cross Section

Figure 3f

Quadrangles

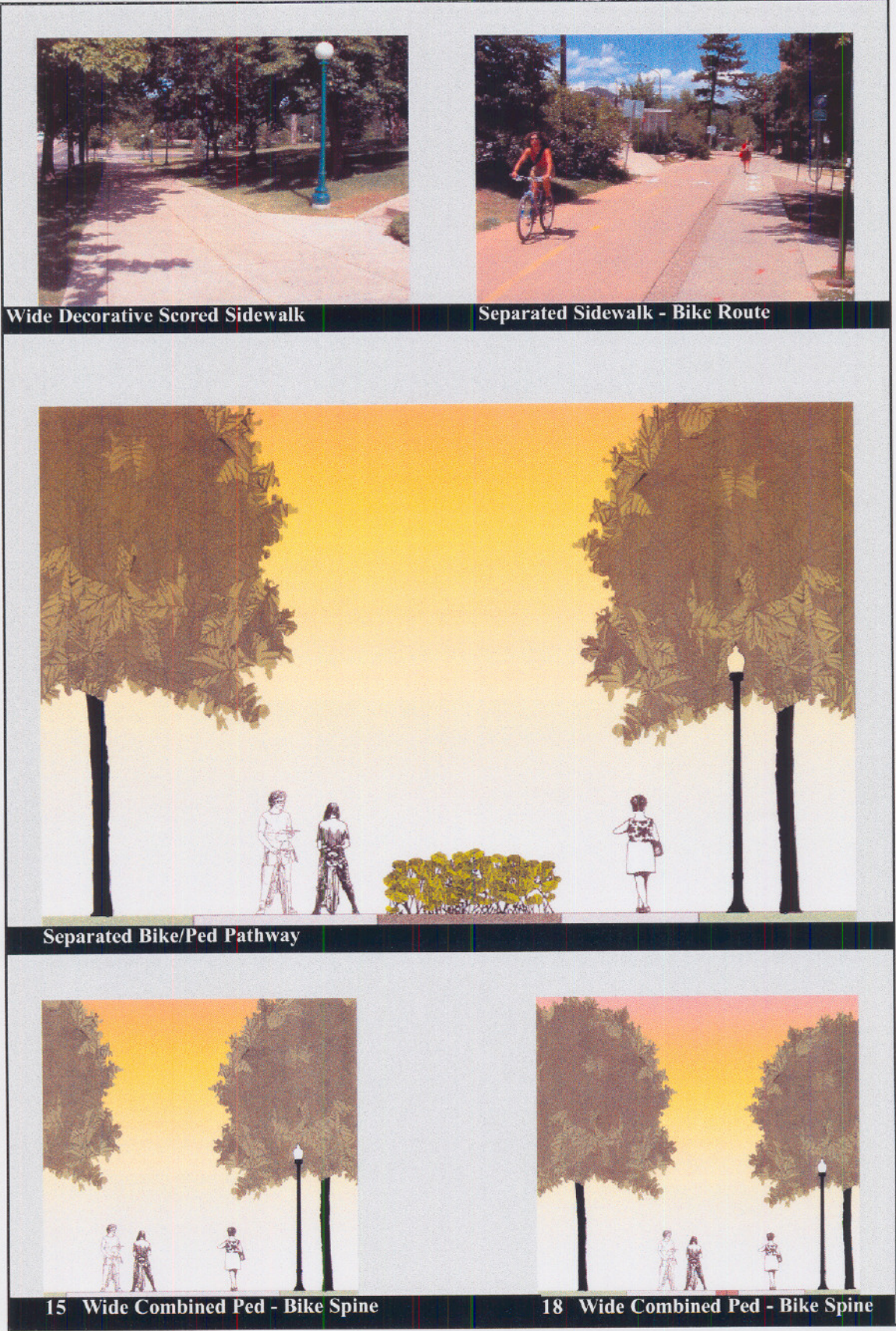


Figure 3g

Ped - Bike Spine

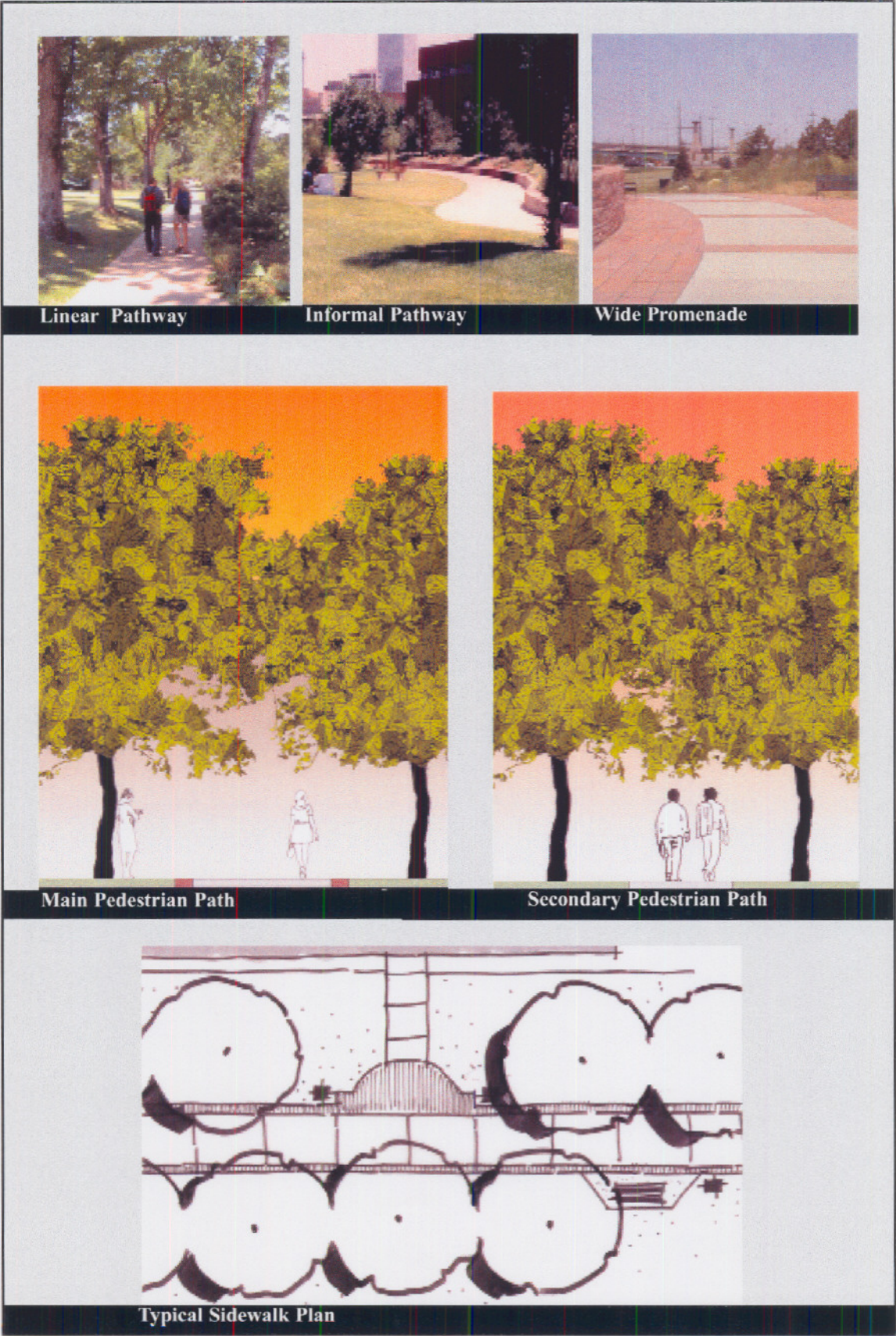
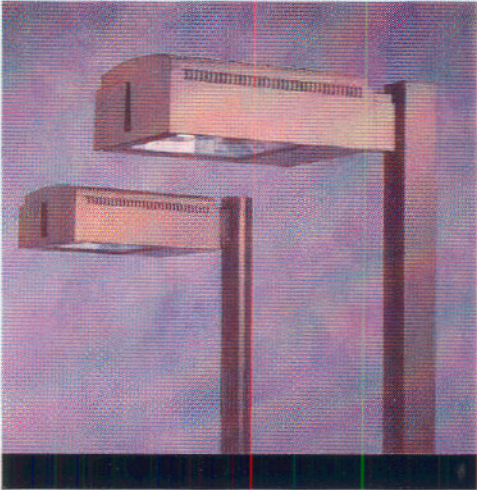


Figure 3h

Pathways



Model:

Luminaire:

Entablature, Type IV [1A/ET4]
with internal house-side shield

Pole:

5" Straight square steel pole

Lamp:

150-250 watt "phosphor coated" lamp
Voltage- varies with installation
Flatglass lens

Manufacturer:

Kim Lighting
16555 East Gale Avenue
City of Industry, California 91745

Local Sales Representative:

M & H Lighting
1044 North Speer Blvd
Denver, Colorado 80206
303.573.0222

Figure 3i

Parking Area Light



Model:

Luminaire:

Universe Series [AAL-UCM-BEL]

Arm:

SLA16-MOD

assembly shown with inverted arm
will be the accepted modified assembly

Pole:

4" round pole, optional banner arm

Lamp:

150-250 watt "phosphor coated" lamp
Voltage- varies with installation
Flatglass lens

Manufacturer:

Kim Lighting

16555 East Gale Avenue

City of Industry, California 91745

Local Sales Representative:

M & H Lighting

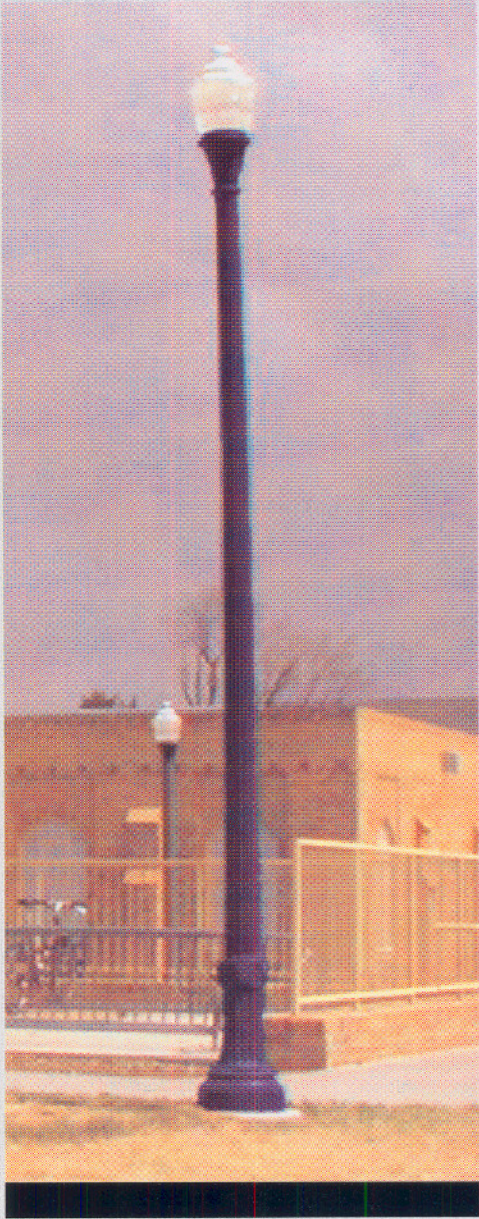
1044 North Speer Blvd

Denver, Colorado 80206

303.573.0222

Figure 3j

West Campus Ped Light



Model:

Luminaire:

Acorn globe with solid lid
L---/5RSL9P-CM-S150/277

Pole:

15' Cast Iron
NY 15/17-CIS/CM

Lamp:

150-250 watt "phosphor coated" lamp
Voltage- varies with installation
Flatglass lens

Base:

Cast Iron

Manufacturer:

Antique Street Lamps, INC
2011-B West Rundberg Lane
Austin, Texas 78758

Sales Representative:

Lithonia Lighting
PO Box A
Conyers, Georgia 30012
303.573.0222

Detail Unit Specifications:

Stainless Steel, tamper resistant hardware

Figure 3k

Central Campus Ped Light



Planter Wall



Historic Gateway Columns



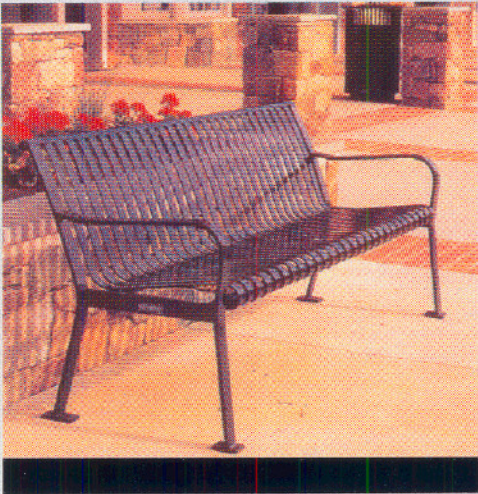
Gateway Monument Elevation



Gateway Monument Sign Wall Elevation

Figure 31

Gateway Monumentation



Model:

RB-28
6' long strap metal bench

Manufacturer:

Victor Stanley, INC

PO Drawer 330, Brickhouse Rd
Dunkirk, MD 20754

Local Sales Representative:

Downs & Associates

436 Lincoln Street
Denver, Colorado 80203
303.744.0488

Detail Unit Specifications:

Surface mount

Figure 3m



Model:

RB-28
6' long strap metal bench

Manufacturer:

Victor Stanley, INC

PO Drawer 330, Brickhouse Rd
Dunkirk, MD 20754

Local Sales Representative:

Downs & Associates

436 Lincoln Street
Denver, Colorado 80203
303.744.0488

Detail Unit Specifications:

In ground or surface mounting required

Accessible table recommended, specify
only 3 seats

Figure 3n



Model:

S-42
36 gallon strap metal trash receptacle

Manufacturer:

Victor Stanley, INC

PO Drawer 330, Brickhouse Rd
Dunkirk, MD 20754

Local Sales Representative:

Downs & Associates

436 Lincoln Street
Denver, Colorado 80203
303.744.0488

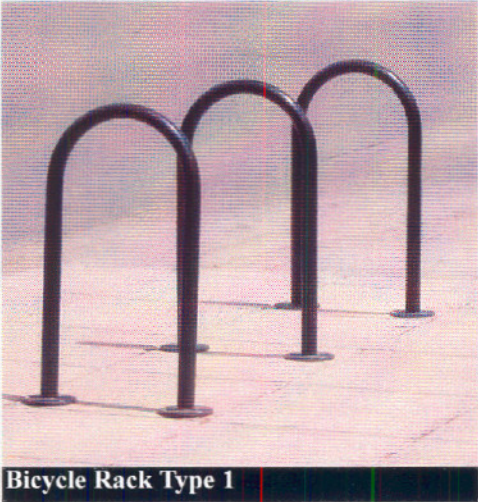
Detail Unit Specifications:

No mounting required

Dome-top ash urn to be specified for
receptacle locations at building entries
and other necessary applicationsz

Figure 3o

Trash Receptacle



TYPE 1 Model:

FU2-02
Bicycle U-Lock

Manufacturer:

BRP Enterprises, INC

3200 O Street
Lincoln, Nebraska 68510

Local Sales Representative:

Recreation Plus

15209 West Ellsworth Drive
Golden, Colorado 80401

Detail Unit Specifications:

For use as approved by Campus Architect

TYPE 2 Model:

1620-16
Galvanized double-sided bike rack

Manufacturer:

PW Athletic MFG. CO.

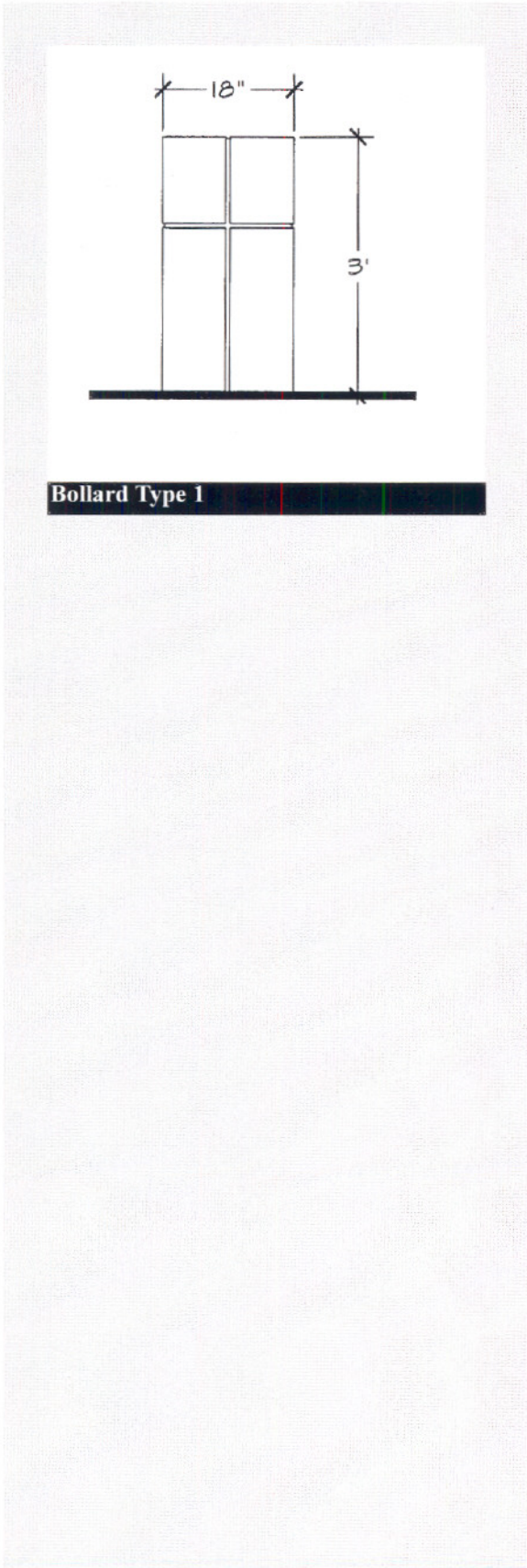
PO Box 9028, 85214
Mesa, Arizona

Detail Unit Specifications:

For use in areas where large bicycle parking need is apparent

Figure 3p

Bicycle Rack



TYPE 1 Model:

PB-38 Round, Glasscrete
Color: Nordic Cream
Finish: Light Sandblast

Manufacturer:

Dura Art Stone
11010 Live Oak
Fontana, California 92337

Local Sales Representative:

Woods Site & Playscapes
PO Box 6
Elizabeth, Colorado 80107

Detail Unit Specifications:

For use as approved by Campus Architect
Permanent or removable mount option

TYPE 2 Model:

Flexible marker stake with 4" reflective top
Colore: White

Manufacturer:

Barco Products
11 North Batavia Avenue
Batavia, Illinois 60510

Detail Unit Specifications:

For use in designated fire routes when necessary per Union Colony Fire Authority

Figure 3q



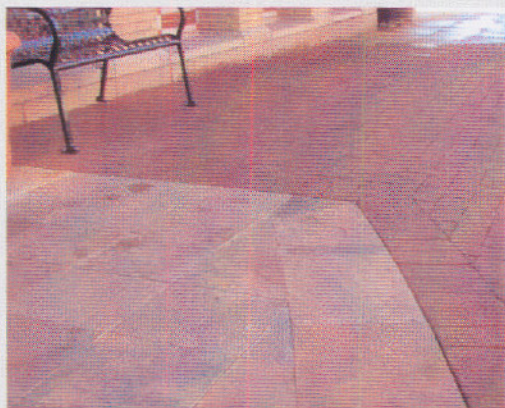
Decorative Scored Concrete Walks



Brick Accent Paving



Brick Accent Bands in Concrete



Sandstone Acent Paving







Granite Acent Paving



Figure 3r

LANDSCAPE DEVELOPMENT CONCEPT




STREETSCAPES

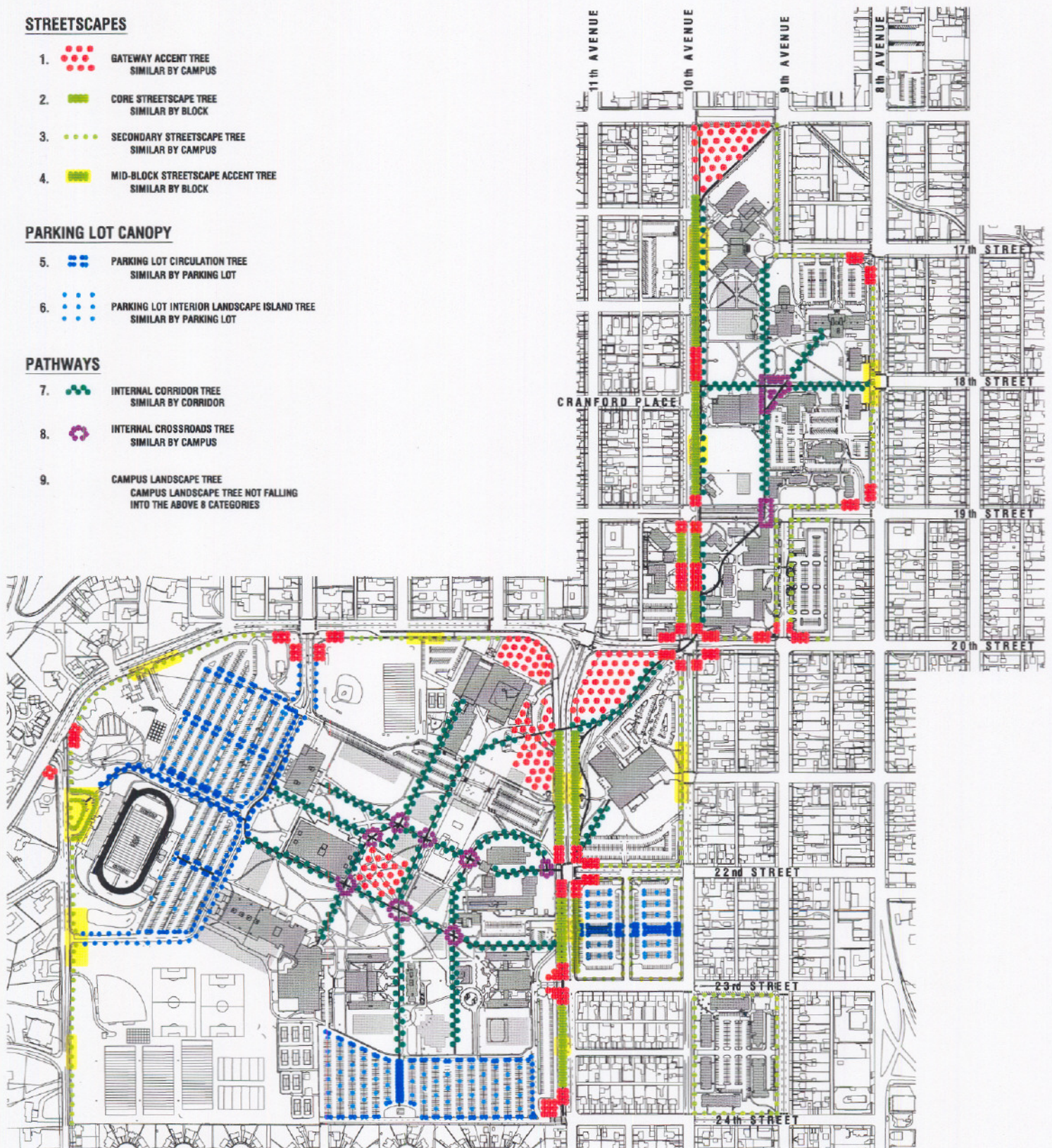
1.  GATEWAY ACCENT TREE
SIMILAR BY CAMPUS
2.  CORE STREETSCAPE TREE
SIMILAR BY BLOCK
3.  SECONDARY STREETSCAPE TREE
SIMILAR BY CAMPUS
4.  MID-BLOCK STREETSCAPE ACCENT TREE
SIMILAR BY BLOCK

PARKING LOT CANOPY

5.  PARKING LOT CIRCULATION TREE
SIMILAR BY PARKING LOT
6.  PARKING LOT INTERIOR LANDSCAPE ISLAND TREE
SIMILAR BY PARKING LOT

PATHWAYS

7.  INTERNAL CORRIDOR TREE
SIMILAR BY CORRIDOR
8.  INTERNAL CROSSROADS TREE
SIMILAR BY CAMPUS
9.  CAMPUS LANDSCAPE TREE
CAMPUS LANDSCAPE TREE NOT FALLING
INTO THE ABOVE 8 CATEGORIES



UNIVERSITY of NORTHERN COLORADO
CAMPUS LANDSCAPE DEVELOPMENT PLAN

Prepared by
SHAPINS ASSOCIATES
PLANNING • DESIGN • CONSTRUCTION MANAGEMENT

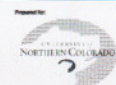


Figure 3s