

UNIVERSITY of
NORTHERN COLORADO



ENROLLMENT MANAGEMENT SUMMIT
OCTOBER 2008

RECRUITMENT

Summary of Outcomes Fall 2008

- Received 5,640 complete applications for Fall 2008
- Of the completed applications, 5,219 students were admitted for Fall 2008

Fall 08 Recruitment Events/Activities

- 365 High School Visits
- 131 College Fairs
- 15 Transfer Fairs
- 58 Community Visit
- 10 Preview Days (914 attended)
- 5 Become a Bear Nights (235 attended)
- 2 Presidential Banquets (44 attended)
- 2 Junior days (170 attended)
- 1 Scholars Day (180 attended)

Top 3 ways enrolling students first learn about UNC

- Family/friend who is a student/alumnus (43%)
- Family/friend who is not student/alumnus (13%)
- High school guidance counselor (8%)



ENROLLMENT

2007-2008 Enrollment Comparisons

		Fall 2008	Fall 2007
New Undergraduates	Freshmen	2,103	2,244
	Transfer	713	633
Continuing/Returning	Freshmen	801	870
	Sophomore	1,738	1,847
	Junior	1,749	1,857
	Senior	2,291	2,458
	Other*	68	67
	Aims First Step	88	0

*Non Degree Seeking, Concurrent HS, Exchange Students
Note: Data Source

Financial Aid

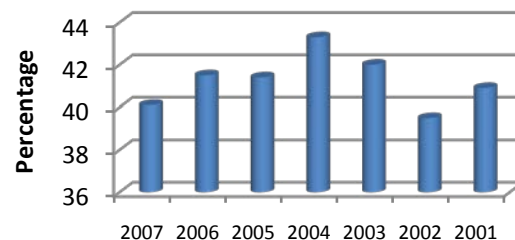
- | 2007-2008 | 2008-2009 |
|---|---|
| ✓ 1,932 students received Pell Grant | ✓ 1,594 students received Pell Grant (fall 2008) |
| ✓ 8,924 students received aid totaling over \$80.3M (\$51.4M was loans) | ✓ Average income for students with \$0 EFC was \$12,459 |
| ✓ 537 students have \$0 EFC* | ✓ 634 students have \$0 EFC |
- *Expected Family Contribution

Enrollment Considerations

- 72% of Enrolled Students considered UNC as their first choice
- Students per Faculty: 22 to 1
- 87% of Undergraduate classes have fewer than 50 students

New Freshman Yield Rate

(Ratio of newly enrolled to newly admitted)



STUDENT SERVICES

Dining Services

Weekend Meals Served (Fri Dinner – Sun Brunch)	2007	2008	%↑
Week 1	4,895	6,291	28.5
Week 2	2,535	3,475	37.1
Week 3	4,113	4,604	11.9
Week 4	3,149	4,101	30.2
Week 5	2,968	4,592	54.7

Housing & Residence Life Programming*

	2008
# of Events	360
# of Participants	5,422

*2008 data is not comparable to 2007 data due to changes in Community Development Model and Program Expectations

Freshman Orientation/ Advising

- 12 Freshman Orientation sessions held with 2,188 students attending
- 4 Transfer Orientation sessions held with 277 students attending
- Fall 2007 CIRP results show UNC students reported past participation in tutoring and remedial support at higher rates than the national sample

Campus Recreation

Facility Usage	2007	2008	%↑
Student Visits*	72,893	44,793	(38.5)
Welcome Week Rec Fest	1,375	1,427	3.8

Wellness Education

	2007	2008	%↑
# of Events	23	20	(13.0)
# of Participants	570	298	(47.7)

Group Fitness

	2007	2008	%↑
# of Events	37	42	13.5
# of Participants	4,172	2,904	(30.4)

Club Sports

	2007	2008	%↑
# of Participants	248	294	18.5

*New tracking software implemented in 2008

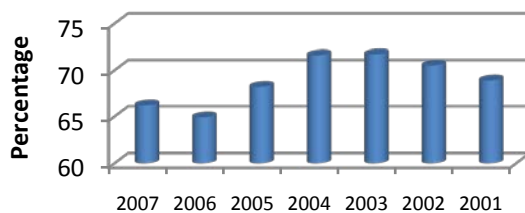
Student Engagement

- Between 8/1/07-3/15/08, 140 community service / civic engagement activities sponsored by the residence halls had a total participation of 4, 124
- The Fall 2007 CIRP study shows that retained students reported that they are more likely to participate in student clubs and groups in college

RETENTION / GRADUATION

New Freshman Retention Rates

(Ratio of new freshmen retained after 1 year)



Undergraduate Degrees

	Fall 2007	Spring 2008	Summer 2008	Fall 2008 (tent)
EBS	150	276	42	156
HSS	129	304	67	166
MCB	82	149	39	78
NHS	179	304	115	155
PVA	48	126	17	48

3-Year Detailed Analysis by Group

	2004	2005	2006
Freshman Cohort	2,382	2,472	2,484
Average Index	103.9	104.9	104.3
# Retained after 1 year	71.6%	68.2%	64.9%
• Average Index	104.9	105.9	105.8
• By Gender			
○ Male	70%	64%	63%
○ Female	72%	71%	69%
• By Minority Status			
○ Minority	70%	65%	54%
○ Non-Minority	72%	69%	67%

2006-2007 Alumni Survey

	2006-2007	%
• Total Graduates	1,968	100.0
• Survey Respondents	1,175	59.7
○ Employed in preferred field	710	60.4
○ Employed outside preferred field	306	26.0
○ Not employed; seeking employment	46	3.9
○ Not employed; not seeking employment	81	6.9
○ Attending graduate school full-time	32	2.7